

TIMES SQUARE

RESTAURANT SPACE STEPS FROM THE
BUSIEST CORNER IN THE WORLD



**47TH &
SEVENTH**

ADJACENT NEIGHBORS

TKTS BOOTH/DUFFY SQUARE
47TH & SEVENTH



EDITION HOTEL
ENTRANCE ON 47TH ST
452 ROOMS



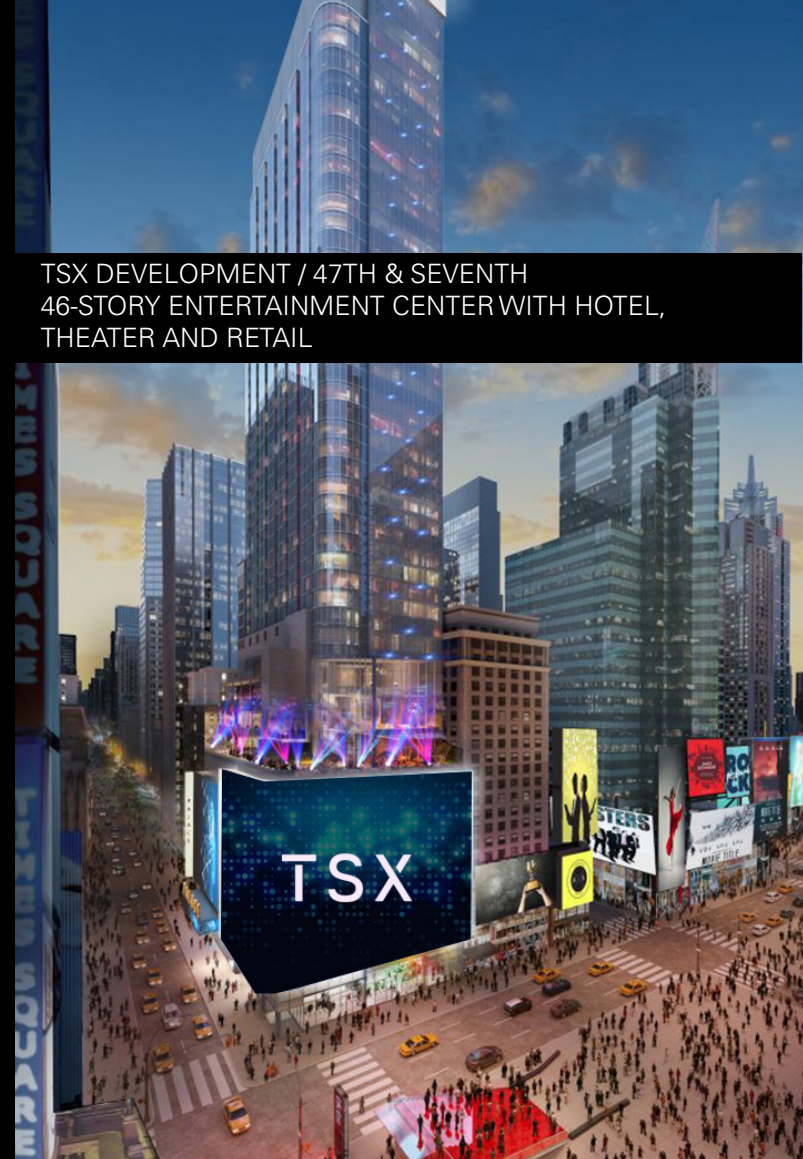
RIU PLAZA HOTEL
145 W 47TH ST
600 ROOMS



TEMPO BY HILTON
ENTRANCE ON 47TH ST
661 ROOMS



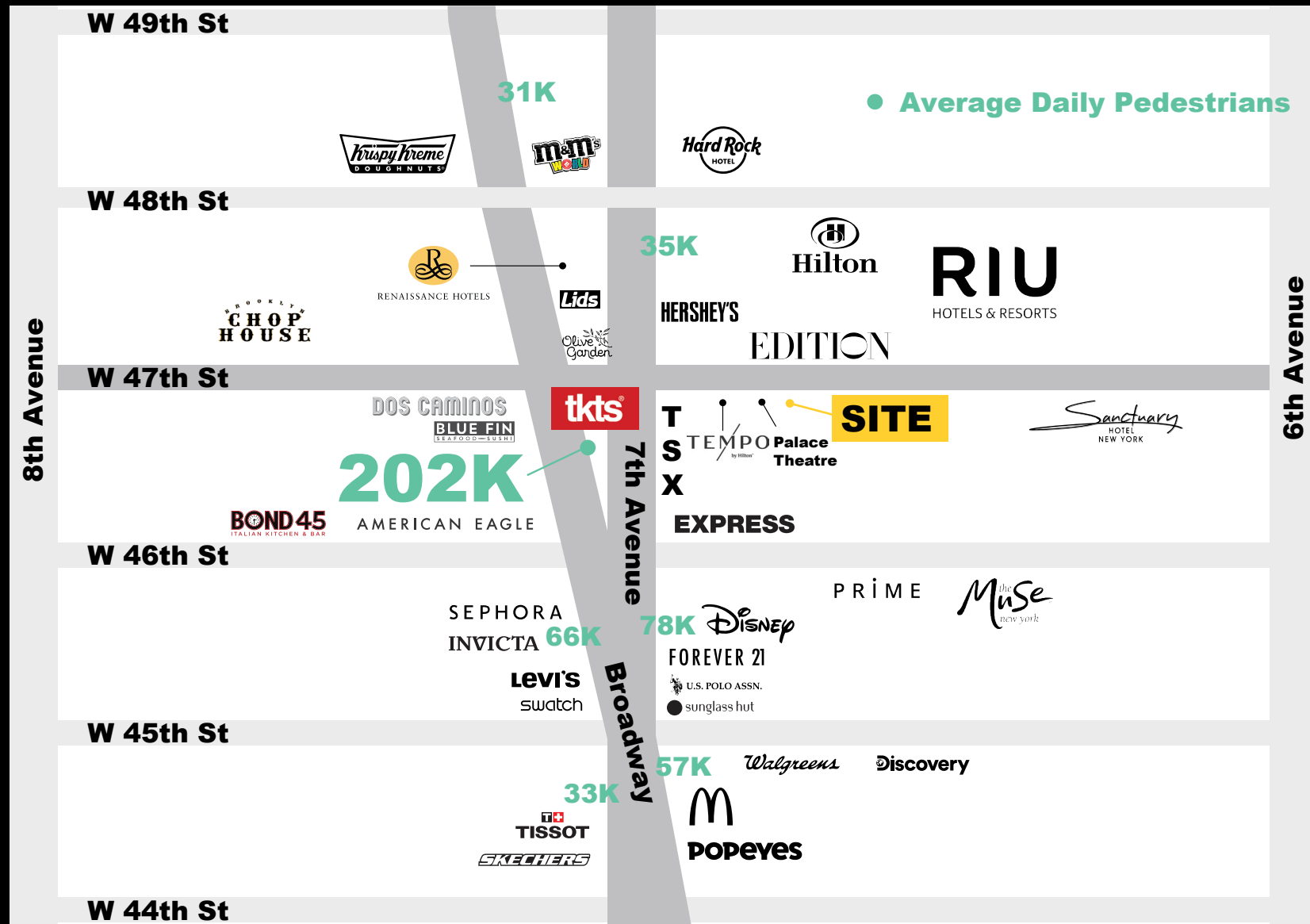
TSX DEVELOPMENT / 47TH & SEVENTH
46-STORY ENTERTAINMENT CENTER WITH HOTEL,
THEATER AND RETAIL



(NEW) PALACE THEATRE
ENTRANCE ON 47TH ST



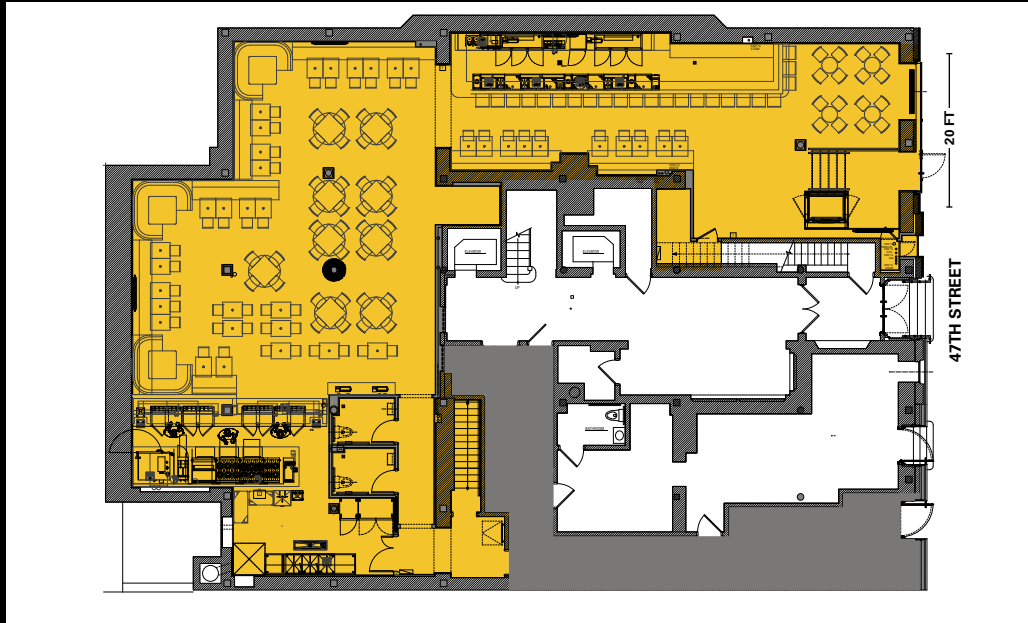
BUSIEST LOCATION IN TIMES SQUARE



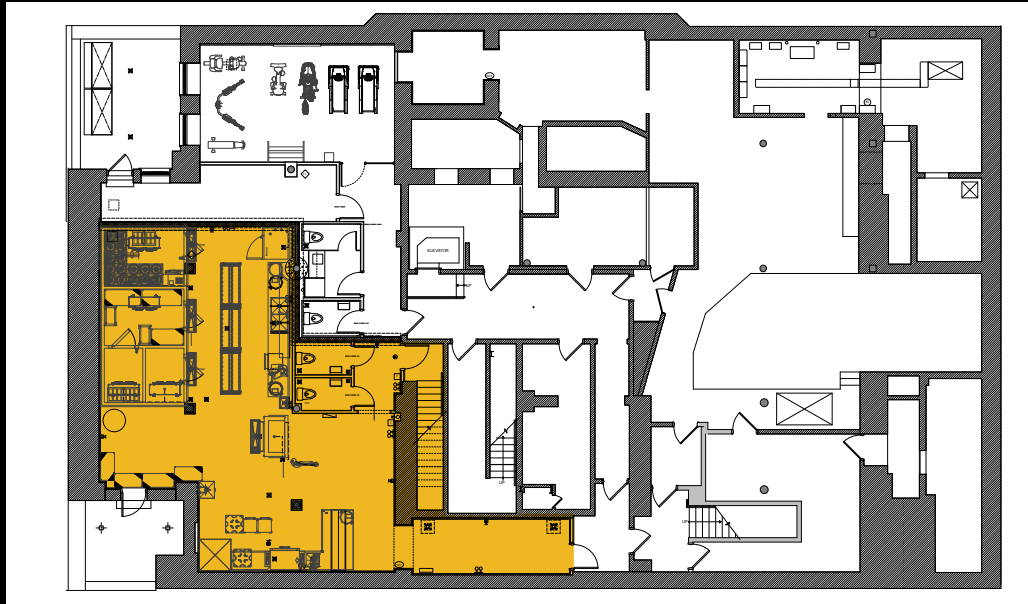
FANTASTIC **SIGNAGE** AND **VISIBILITY** WITH NEW ILLUMINATED **MARQUEE SIGN**



GROUND FLOOR



LOWER LEVEL



THE DETAILS

150 WEST 47TH STREET
between Sixth and Seventh Avenues

Ground Floor	3,822 SF
Lower Level	1,616 SF

20 FT of all-glass frontage with large illuminated marquee sign above storefront
Space will be delivered with new storefront, signage and venting in place

Situated on the same block as several major hotels including the Edition, Tempo by Hilton (coming soon), The Sanctuary, Oyo, Riu Plaza and Night Times Square Hotels

Next door to the entrance of the new Palace Theatre at the TSX development

Steps from Duffy Square and the TKTS booth, one of the most visited tourist attractions in all of New York City