



BRAND-NEW HIGH-END SUBLEASE OPPORTUNITY

SPECTACULAR MIDTOWN VIEWS

# 500Fifth





# Entire 57th Floor 5,490 RSF

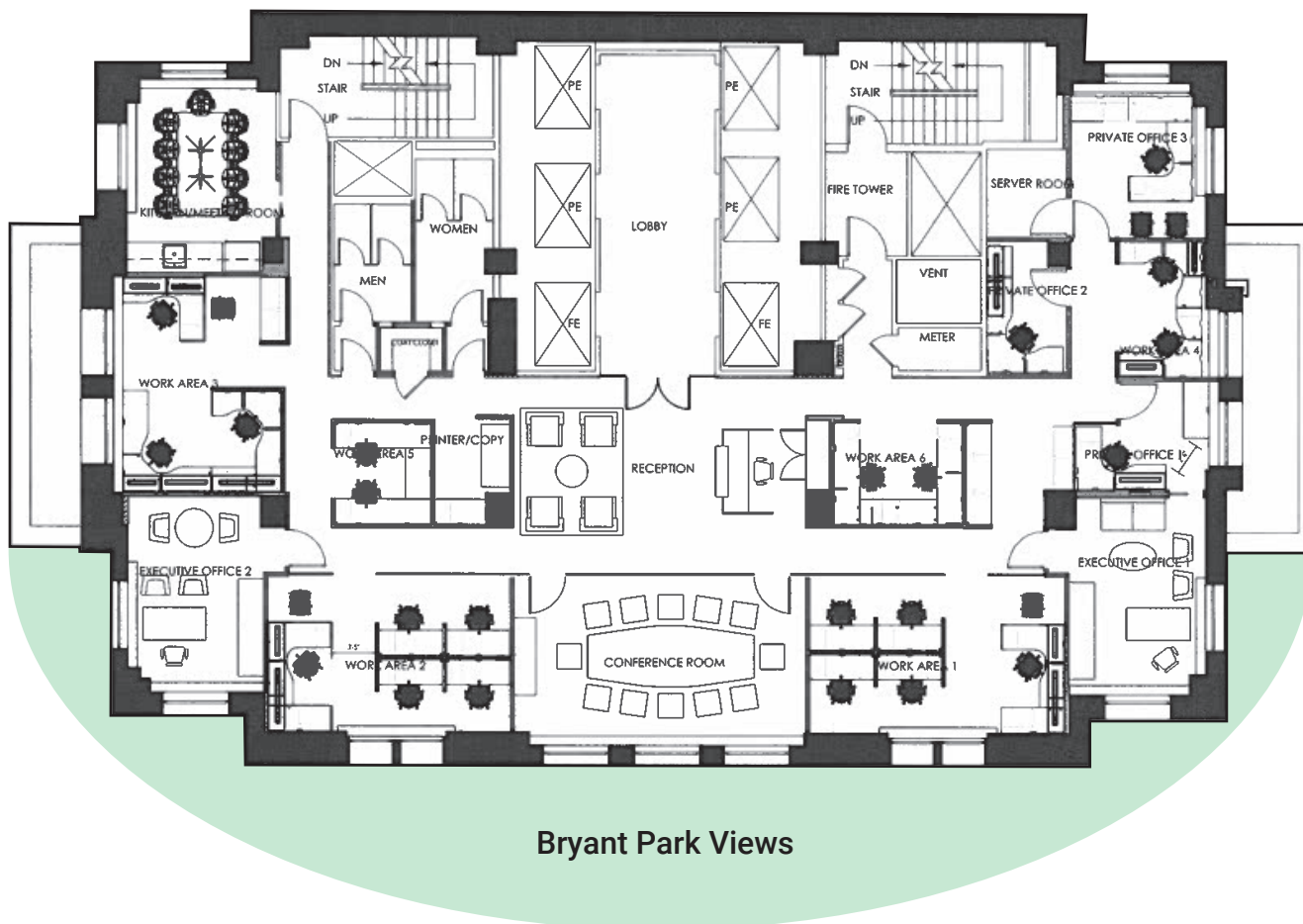
**Possession**  
Immediate

**Sublease Term**  
Through August 30th, 2026

## Comments

- Full floor availability
- Built out with 5 private offices, 6 open work areas with 19 workstations, and large boardroom
- Brand new high-end installation
- Fully furnished and wired
- Spectacular Midtown views overlooking Bryant Park





# 500 Fifth