

# DENTAL/MEDICAL SPACE FOR LEASE

160 EAST 56TH STREET, NEW YORK, NY 10022

## 5,500SF AVAILABLE

### SPACE DETAILS:

**SIZE:** 2,750 RSF (Per Suite)

**RENT:** \$13,520/Month

**POSSESSION:** SEPTEMBER 1, 2024

### SPACE HIGHLIGHTS:

- Pre-Built Dental/Medical Space
- 5 Treatment Rooms
- 1 Private Office
- Oversized Windows with North/South Exposure



DEMOGRAPHICS:	1 mile	2 mile	3 mile
Population	161,959	674,116	1,306,262
Households	95,748	371,358	664,576
Daytime Employment	691,315	1,288,907	1,573,068

# DENTAL/MEDICAL SPACE FOR LEASE

160 EAST 56TH STREET, NEW YORK, NY 10022

## BUILDING HIGHLIGHTS:

- Exciting Lobby Upgrades Underway
- 4 Major Hospitals Nearby
- Near Multiple Major Forms of Transit
- High Foot Traffic Area



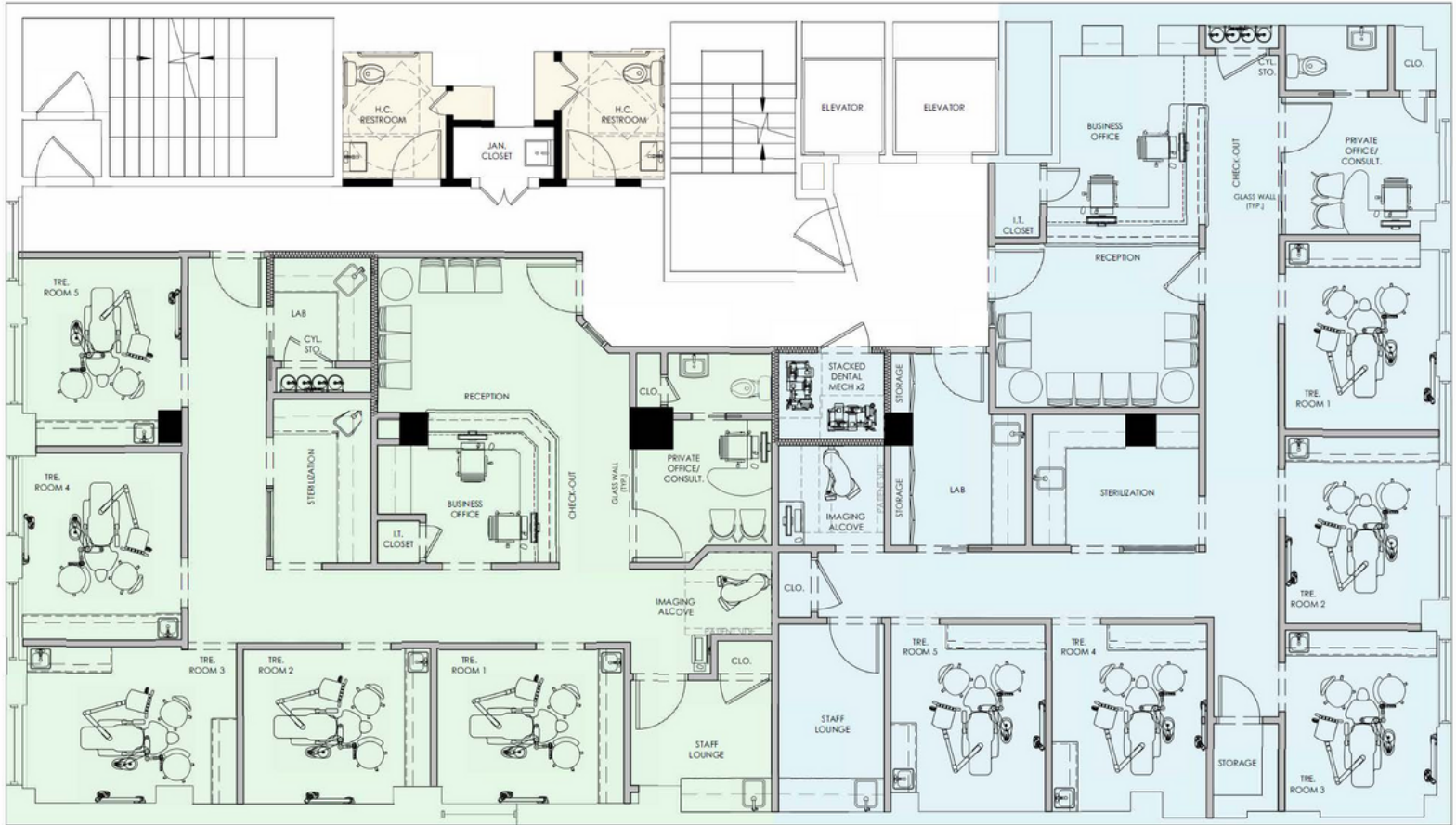
## LOBBY RENDERINGS:



# DENTAL/MEDICAL SPACE FOR LEASE

160 EAST 56TH STREET, NEW YORK, NY 10022

## PROPOSEDBUILD OUT: 2 OFFICE SUBDIVISION

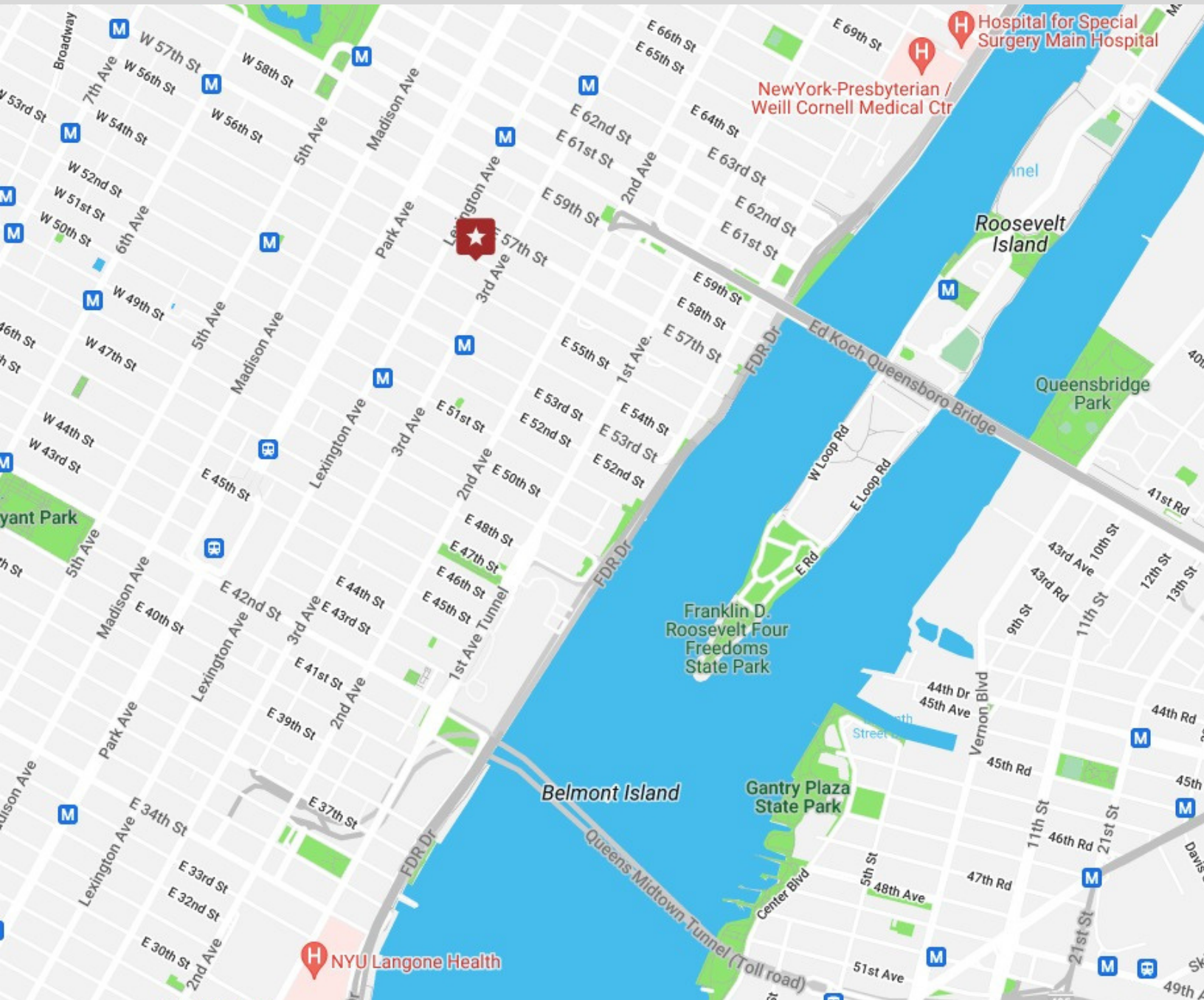


South

North

# DENTAL/MEDICAL SPACE FOR LEASE

160 EAST 56TH STREET, NEW YORK, NY 10022



**NEW YORK PRESBYTERIAN HOSPITAL**  
**HOSPITAL FOR SPECIAL SURGERY**  
**NYU LANGONE HEALTH**  
**BELLEVUE HOSPITAL**  
**SUBWAYS NEARBY**

**1.1 Miles Away**  
**1.2 Miles Away**  
**1.5 Miles Away**  
**1.7 Miles Away**

