

# 1133

## Avenue of the Americas





FLOOR  
PARTIAL 31

SUITE  
SUITE B

SIZE  
5,567 RSF

POSSESSION:  
Immediate

TERM:  
11/30/2026

COMMENTS:

- Space delivered in Plug & Play condition
- Terrific views and natural light featuring views of Bryant Park
- Boutique 6th Avenue floor plate
- Strong sub-landlord





# Floor Plan

## 31 st Floor

As-built Plan

### SUITE B

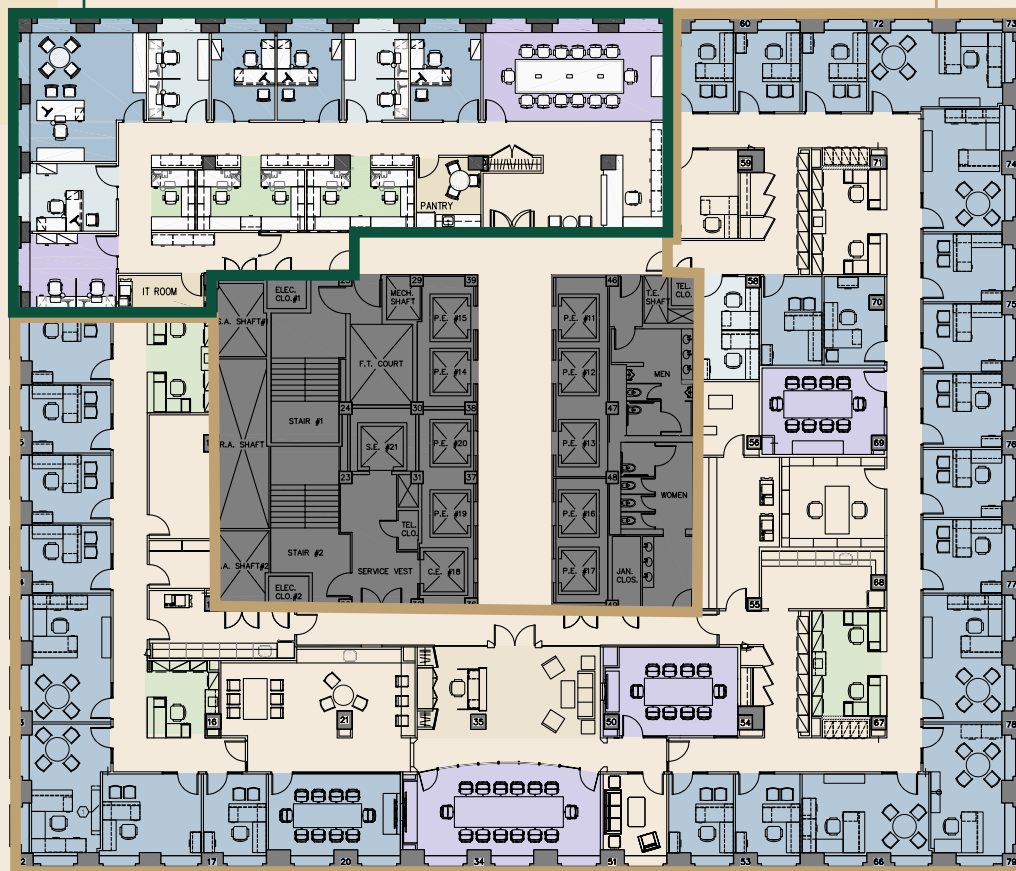
5,567 RSF

- 8 Perimeter offices
- 5 Workstations
- 1 Conference rooms
- 1 pantry

### SUITE B

WEST 44TH STREET

### SUITE A



AVENUE OF THE AMERICAS

WEST 43RD STREET

NORTH







**1133**  
Avenue of  
the Americas