

250 PARK AVE





PARTIAL 12TH FLOOR

5,638 RSF

POSSESSION

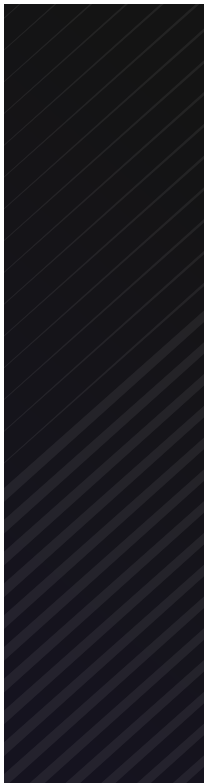
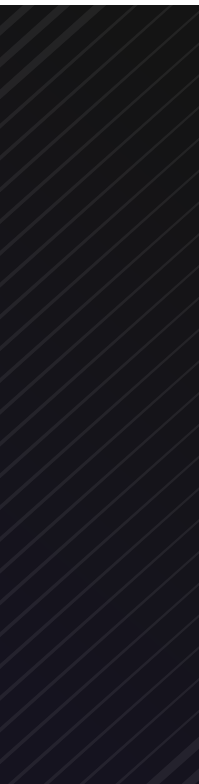
Immediate

TERM

November 29, 2026

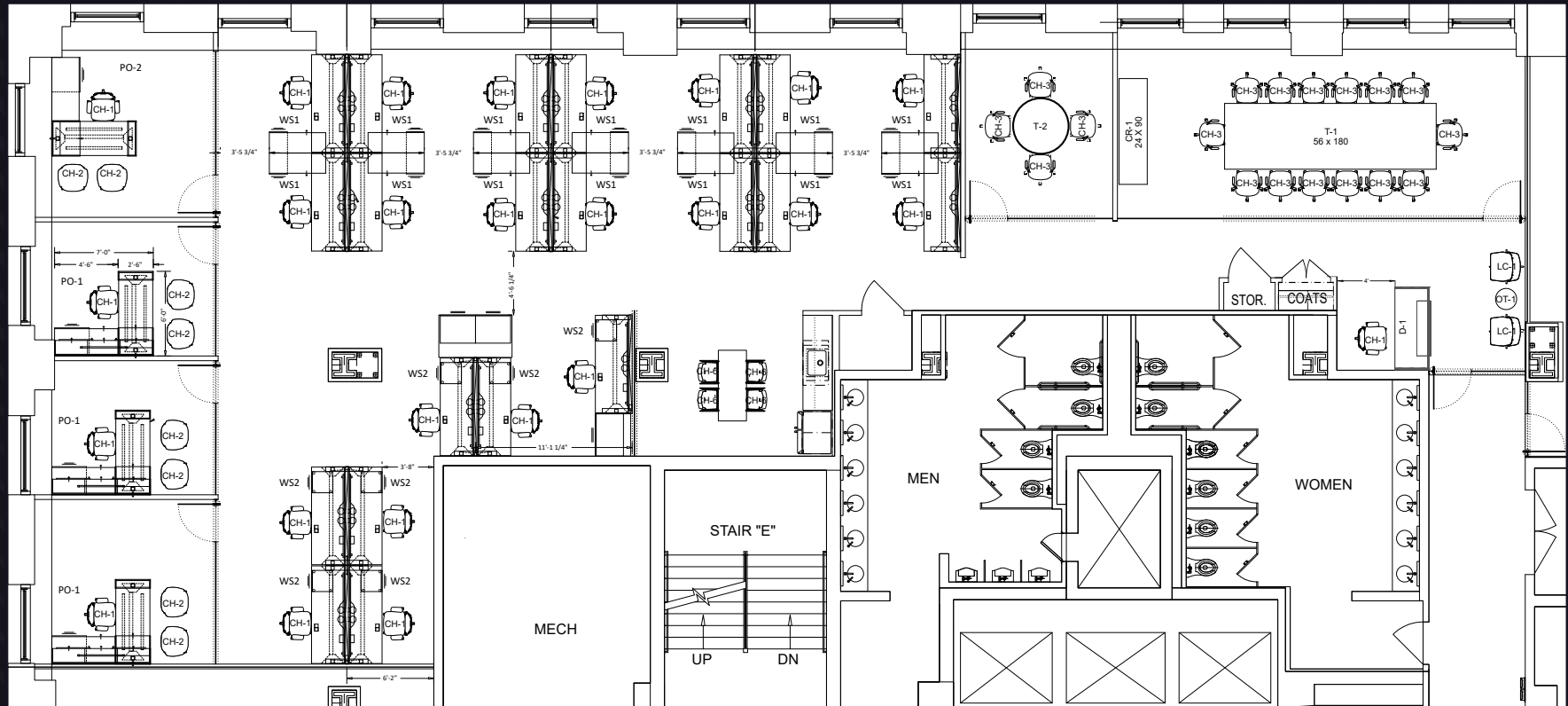
COMMENTS

- » Brand new prebuilt, fully furnished and wired.
- » Built with 4 offices, 1 boardroom, 1 small conference room and open area for ~20 sit-stand desks.
- » New corridor and restrooms.
- » Good light and views.
- » Recently renovated lobby and upgraded elevators.
- » Located one block from Grand Central Terminal with access to Metro North, LIRR, the 4, 5 6, 7 subway lines and shuttle to Times Square.



Vanderbilt Avenue

46th Street



250
PARK
AVE