

767

FIFTH AVENUE

GM BUILDING

Sublease

Partial 12th floor — 5,888 RSF

Term: November 2027



PARTIAL 12TH FLOOR — NORTHWEST CORNER

POSSESSION: IMMEDIATE

5,888 RSF

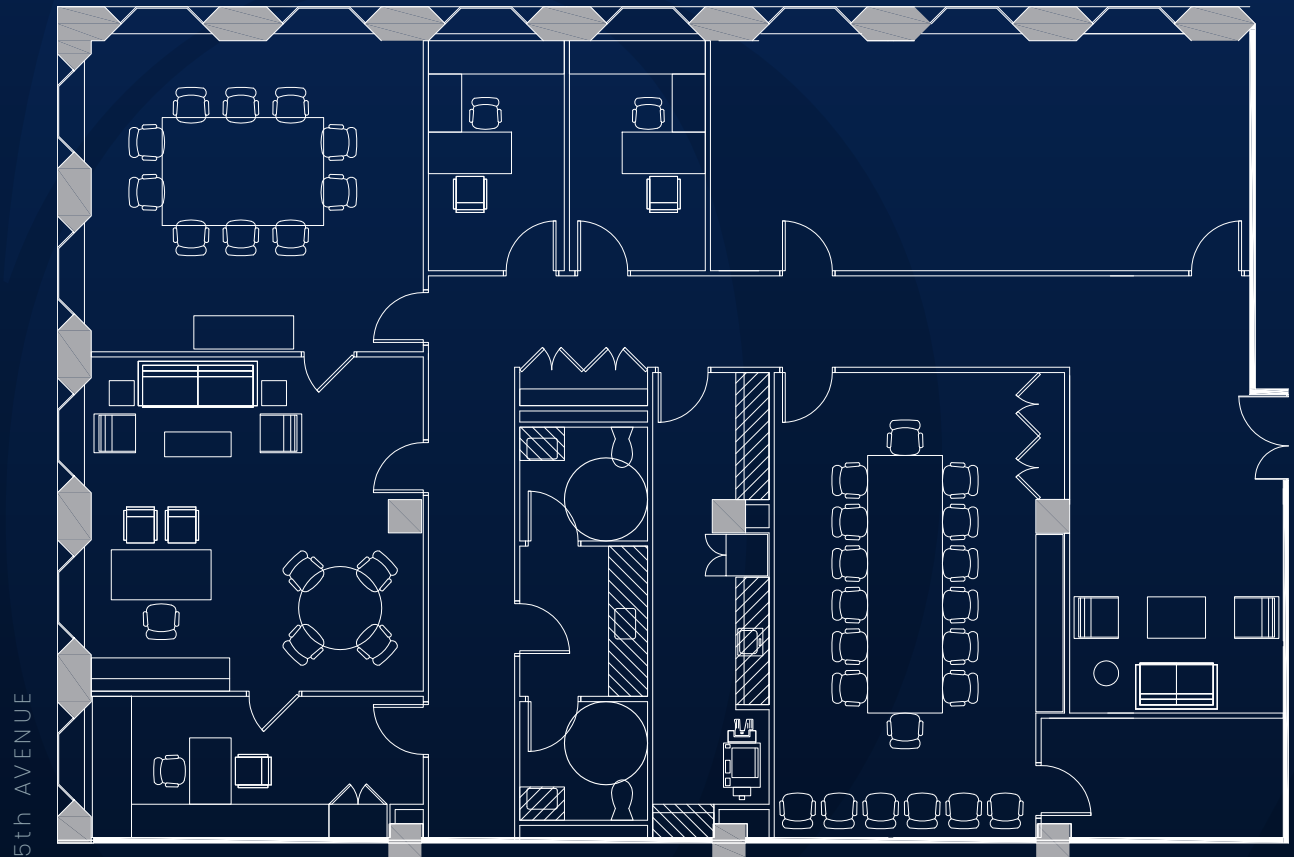
TERM: NOVEMBER 2027

EAST 59th STREET

COMMENTS:

- Direct views overlooking Central Park and The Plaza
- Built move-in ready installation with furniture
- Private bathrooms within the space
- Building features a brand new amenity center

- 2 CONFERENCE ROOMS
- 1 EXECUTIVE OFFICE
- 3 PRIVATE OFFICES
- 2 PRIVATE BATHROOMS
- 1 PANTRY
- 1 RECEPTION
- WORKSTATIONS AREA





767

FIFTH AVENUE

GM BUILDING

Sublease

