

PARTIAL FLOOR 23

5,923 SF



BUILDING EXTERIOR



VESTIBULE

AVAILABILITY

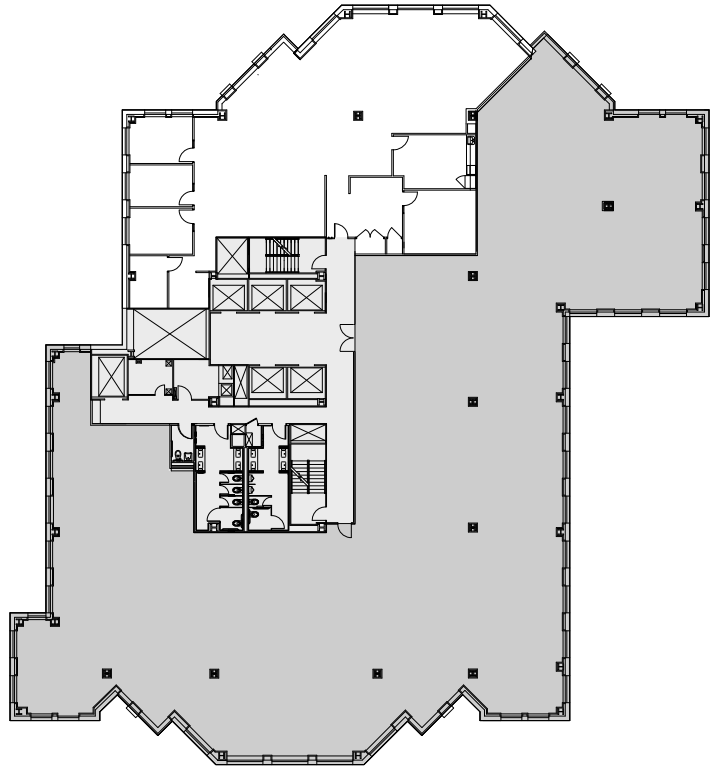
- Built Space
- Available January 2024

PROPERTY FEATURES

- Notable building tenancy including Bank of America Private Wealth Management & Merrill Lynch
- Significant neighborhood foot traffic from both office workers and tourists
- Located mere moments from seven subway lines and within blocks of renowned international firms, prestigious private clubs, popular hotels, Rockefeller Center, Times Square, and New York's legendary Theater District

AS-BUILT PLAN

West 47th Street



West 46th Street