

12 EAST 41ST STREET

FLOOR	RENTABLE SQUARE FEET	NOTES
LL	4,107	STUDENT LOUNGE
2	6,100	CLASSROOMS WITH PARTITION WALLS
3	6,350	BUILT CLASSROOM
4	6,350	CLASSROOMS WITH PARTITION WALLS
5	6,350	NEWLY BUILT CLASSROOMS
6	6,370	NEWLY BUILT CLASSROOMS
7	6,000	CLASSROOMS WITH PARTITION WALLS
8	6,000	BUILT CLASSROOM
9	6,000	BUILT CLASSROOM
10	5,700	BUILT OFFICE
11	5,700	NEEDS DEMO
12	5,325	STUDENT LIBRARY - 8 OFFICES
13	5,325	BUILT OFFICE - 11 OFFICES & 2 LARGE OPEN AREAS
14	4,500	BUILT OFFICE - 11 OFFICES & 1 FACULTY LOUNGE, RECEPTION
15	4,555	NEWLY BUILT CLASSROOMS
16	4,000	BUILT OFFICE
17	4,000	NEEDS DEMO
TOTAL	92,642 SF	



12 EAST 41ST STREET
NEW YORK, NY

LOCATION OVERVIEW

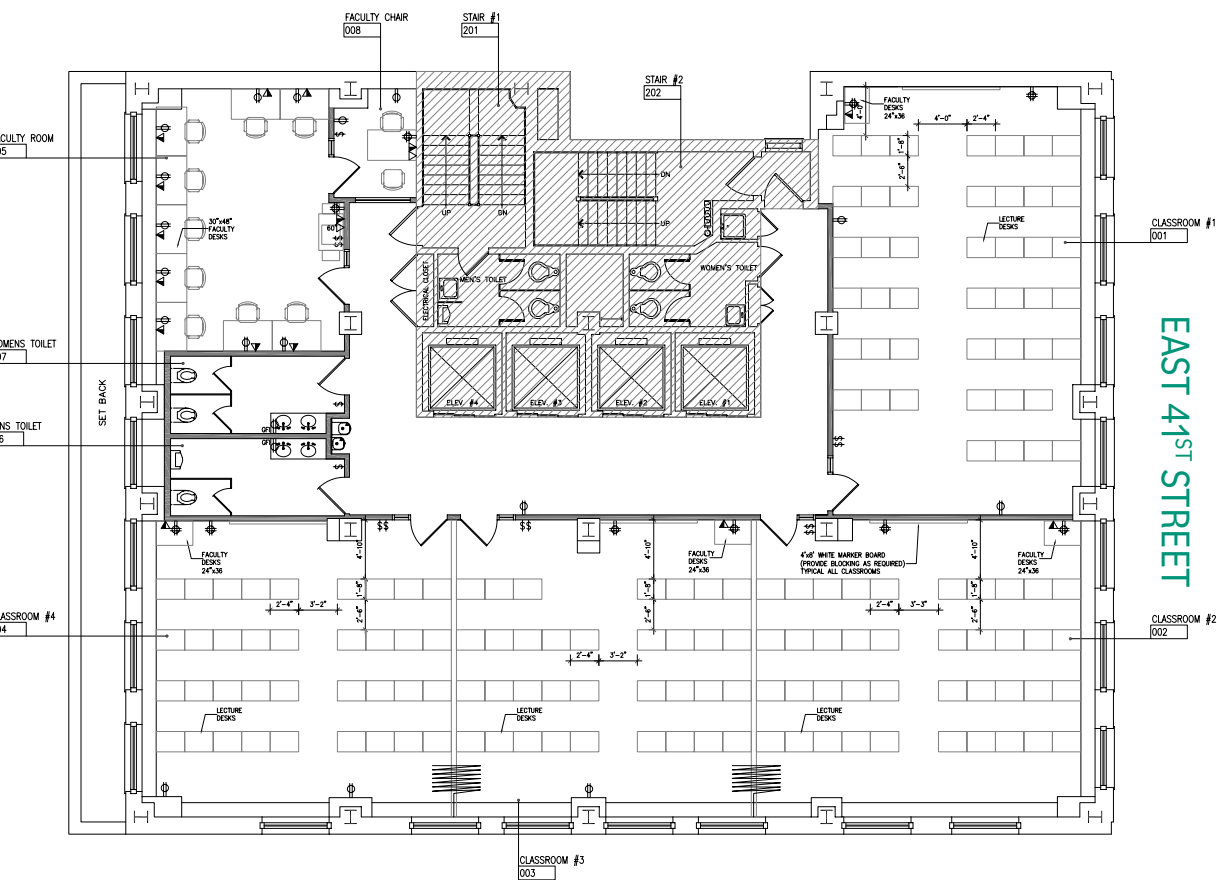


PRIME MIDTOWN LOCATION

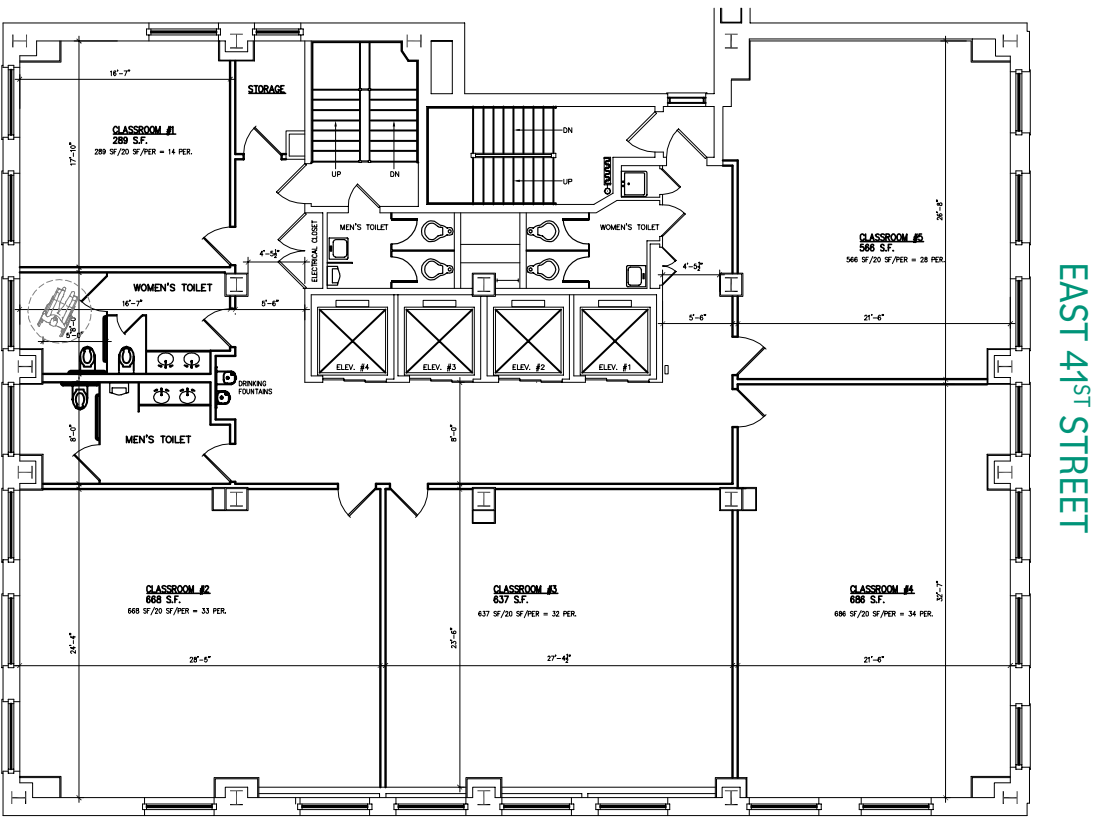
- » Two blocks to Grand Central Station
- » Walking distance to Penn Station & Port Authority
- » Walking distance to Subways 4,5,6,S,7,B,D,F,M,Q,N,R,1,2,3

FLOOR PLANS

FLOOR 7



FLOOR 8



SPACE PHOTOS



SPACE PHOTOS



