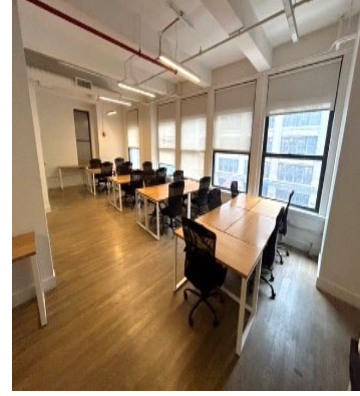
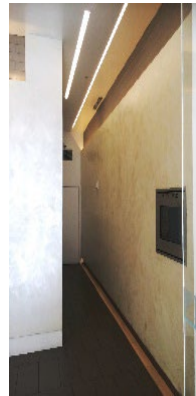


# 115 EAST 23<sup>RD</sup> STREET

## High-end Office Suites / Co-working

### FLOORS 3, 4 and 5 – 6,140 SF EACH

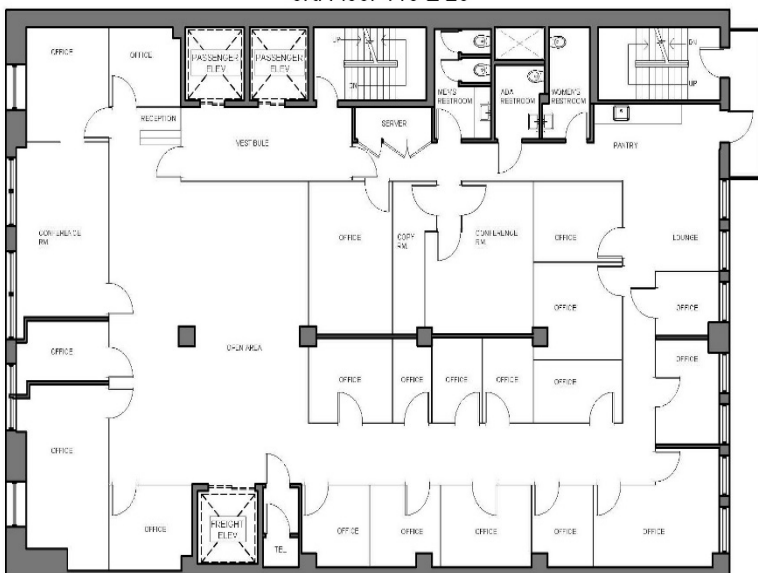


**EXPOSED 11 1/2 FOOT CEILING**  
**PRIVATE BATHROOMS + KITCHENS**  
**MODERN, ATTENDED LOBBY**  
**2 UPDATED PASSENGER ELEVATORS + FREIGHT**  
**24/7 ACCESS VIA KEY CARD**  
**HIGH-SPEED INTERNET: WIRES CORE CERTIFIED**

**FULL FLOORS, DIRECT ELEV. ACCESS**  
**BUILT MODERN GLASS & STEEL OFFICES**  
**NATURAL LIGHT + HIGH-END FINISHES**  
**TENANT-CONTROLLED AC**  
**DIRECT ELECTRIC**  
**HARDWOOD FLOORS**

**Steps from Madison Square Park, Flatiron and Union Sq.**  
**CONVENIENT SUBWAY ACCESS: 4, 5, 6, F, L, M, N, R, V, W**

3rd Floor 115 E 23



5th Floor 115 E 23

