

# 680 FIFTH BUCHMANN TOWER



Make Yourself At Home

# LIFE,

All the comforts of home, in  
a prime plaza district setting



# WELL LIVED.





SIMPLE  
RITUALS,



MADE  
BETTER.

# six BUCHMANN eighty LOUNGE

Achieve five-star living all while on your lunch break. Every nook and corner of the Buchmann Lounge at Buchmann Tower has been thoughtfully curated to provide everything high-performing teams need to thrive.



**six** BUCHMANN  
LOUNGE  
**eighty**

AMENITY SPACE



AMENITY SPACE

Intentionally designed to minimize distractions and encourage creativity, whether you work best-perched fireside or fully plugged in, there's a space for you here. Three spacious conference rooms and ample lounge seating offer plenty of opportunity to think outside the box, while the library, full pantry, and unmatched fitness center make Buchmann Lounge a retreat worth commuting from your desk for.



3rd & 4th Floor lounge directly accessible from all elevator banks



Conference Rooms for up to 18





Multiple Breakout & Private Event Spaces

Wellness Facilities



State-Of-The Art  
Fitness Center



Full Pantry & Coffee Bar



STUNNING  
POSSIBILITIES



AT  
ALL  
SIZES



680 Fifth offers pre-built or completely customizable workspace with unique opportunities for full floor presence from 6,000-13,000 RSF.

With unobstructed western views of the MoMa Sculpture Garden, iconic Fifth Avenue vistas to the east, and multiple terrace opportunities throughout, 680 Fifth offers a rare trifecta of tranquility in the heart of Manhattan's most dynamic neighborhood.



MOMA SCULPTURE GARDEN



TIFFANY AND CO



THE UNIVERSITY CLUB OF NEW YORK



SAKS FIFTH AVENUE

Blank Canvas,  
Flexible Build-Outs

Spacious &  
Airy Floors

Sophisticated Service

Invested In  
Your Success



# Availability

Floor 18 – 6,355 RSF

Floor 15 – 6,355 RSF

Floor 14 – 6,355 RSF

Floor 13 – 6,355 RSF

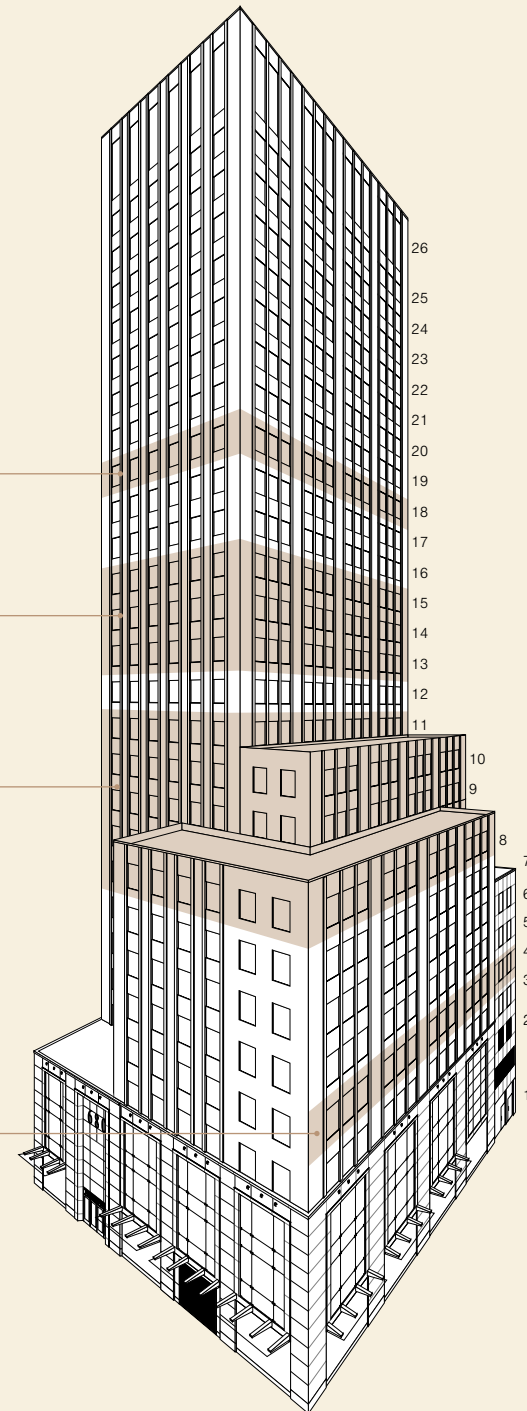
Floor 11 – 9,400 RSF

Floor 10 – 9,400 RSF

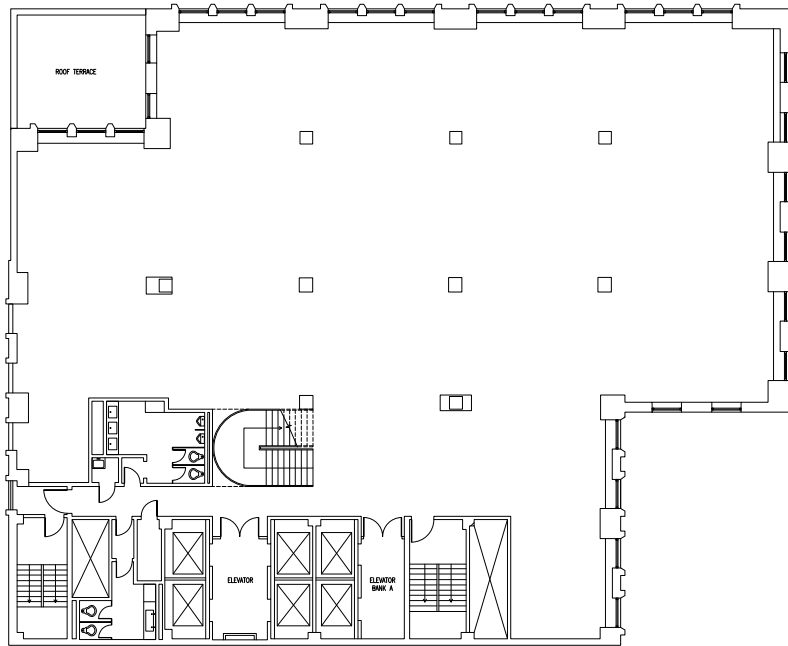
Floor 9 – 13,185 RSF

Floor 8 – 13,185 RSF

Floor 4 – 8,460 RSF



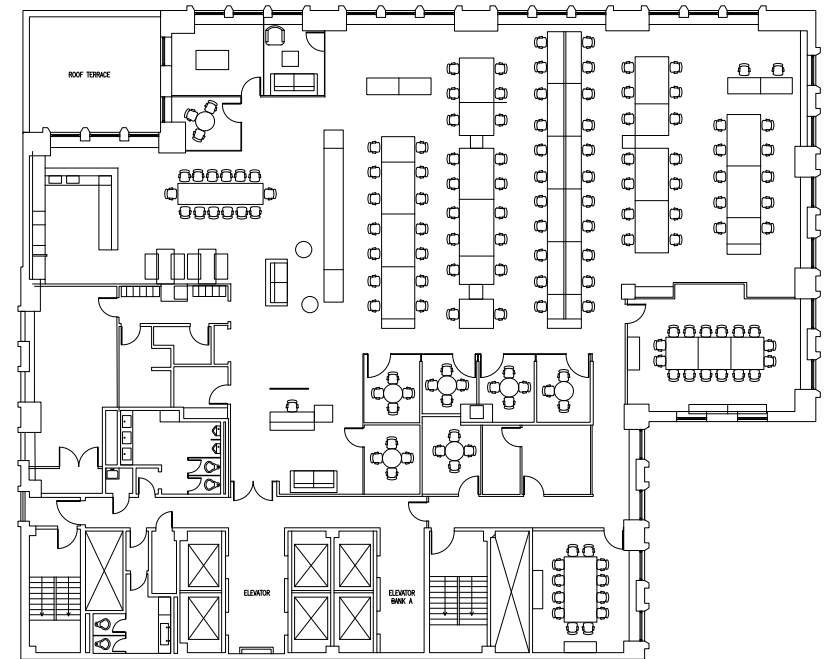
## 8th Floor Core & Shell



13,185

RSF

## 8th Floor As-Built

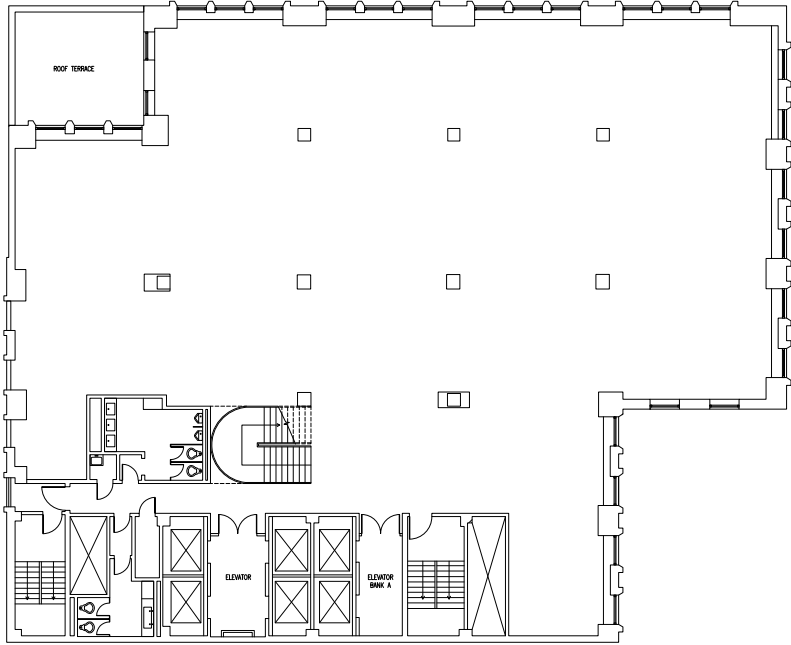


13,185

RSF

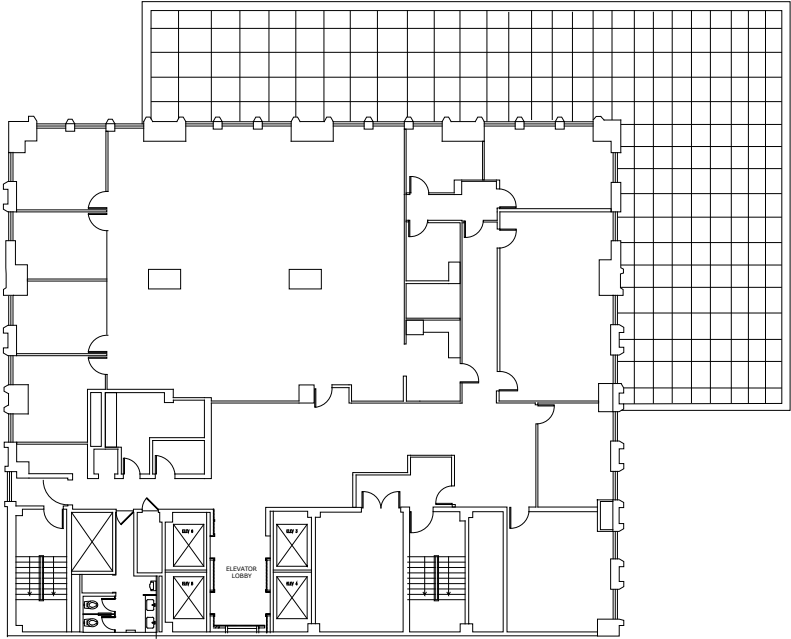
WORKSPACE	QTY
Conference Rooms	2
Meeting rooms / Offices	7
Executive Office	1
Reception	1
Open area for 80 people	

# 9th Floor Core & Shell



13,185  
RSF

# 10th Floor As-Built



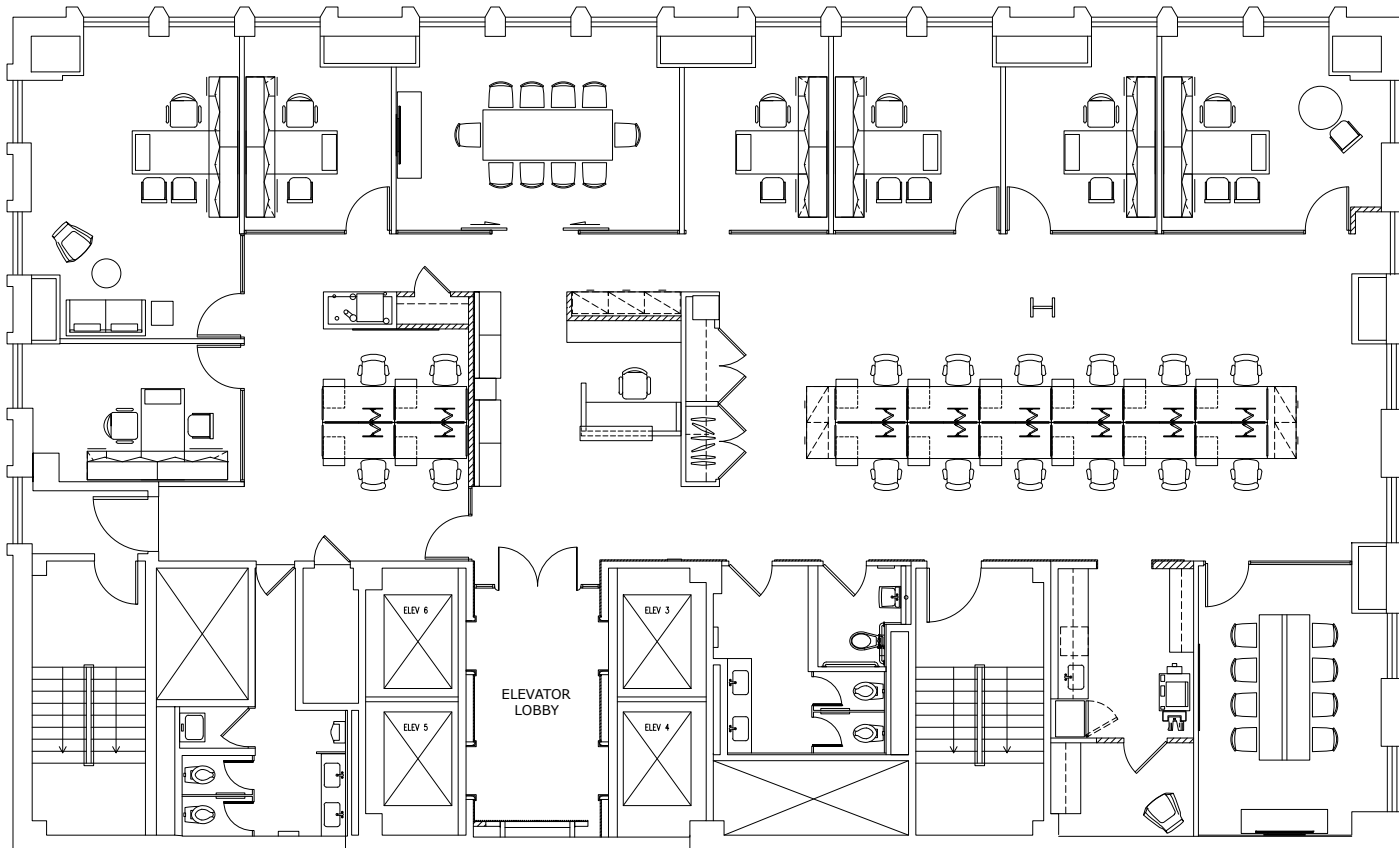
9,400  
RSF

WORKSPACE	QTY
Conference Rooms	2
Offices	7
Executive Office	1
Reception	1

# Tower Floor Test-Fit

WORKSPACE	QTY
Conference Rooms	2
Offices	7
Reception	1
Open area for 16 people	

6,355  
RSF



# Midtown Convenience. Modern Luxury.

Steps from the E/M subway lines and blocks from Central Park and Rockefeller Center, 680 Fifth is contemporary office living at its finest.

CENTRAL PARK



ROCKEFELLER CENTER



ST. REGIS



High-end retail, world-class restaurants and NY's most historic cultural institutions are all at your doorstep. 680 Fifth is surrounded by an air of sophistication only New York's most iconic avenue commands.