

35

WEST 36TH STREET MIDTOWN, NYC

Between Fifth & Sixth Avenues

OFFICE/RETAIL FOR LEASE

APPROXIMATE SIZE

Second Floor: 6,803 SF

ASKING RENT

\$50 PSF

POSSESSION

Immediate

TERM

Negotiable

COMMENTS

- Pre-built office floors available for lease
- Ability to divide
- All uses considered

NEIGHBORS

Clinton Hall • Black Tap • Aldo • Tacombi •
Empire State Building • Starbucks • Zuma •
The Raines Law Room • Krispy Kreme • Parlour
Room • Keens Steakhouse • Just Salad

TRANSPORTATION

M1 M2 M3 M4 M55 Q32

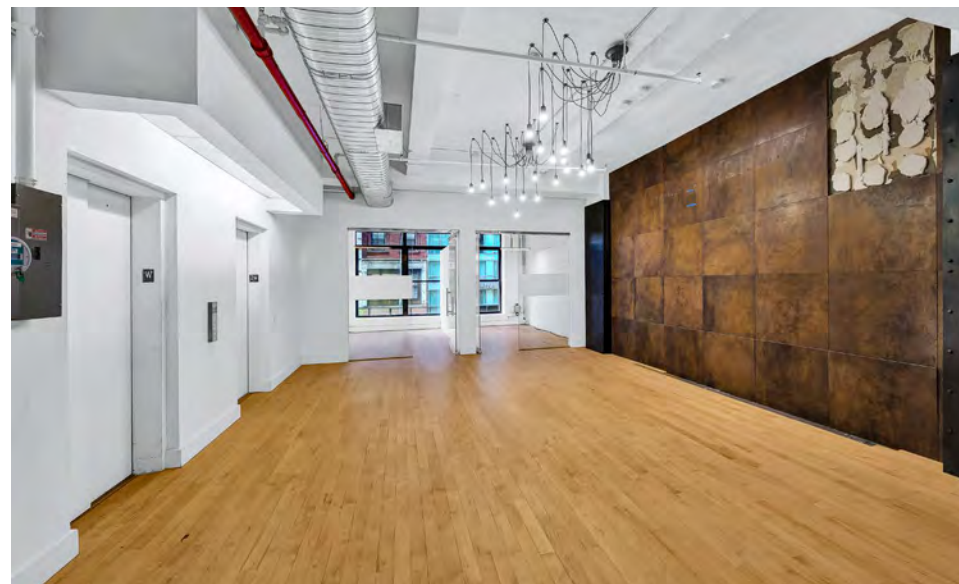
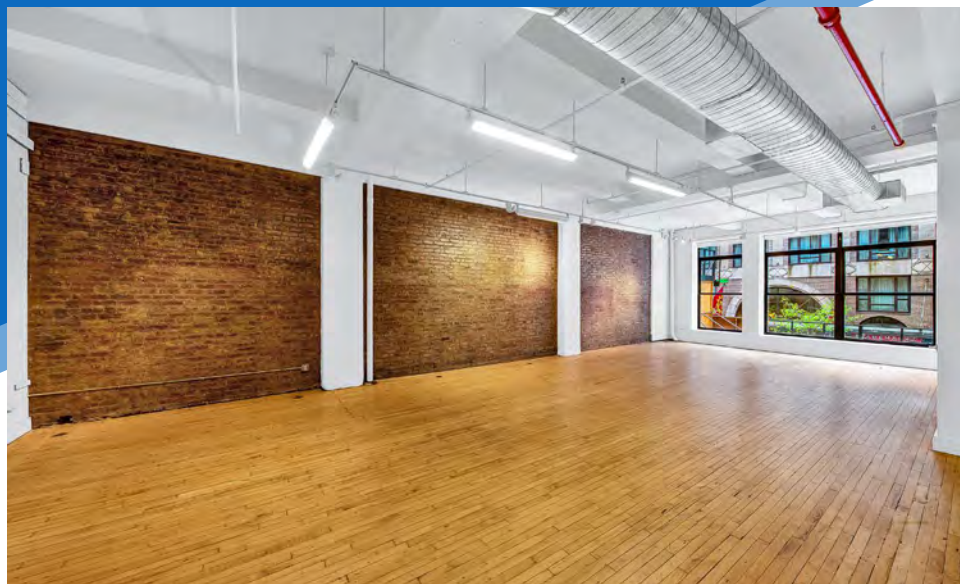
4 5 6 B D F M N Q R W

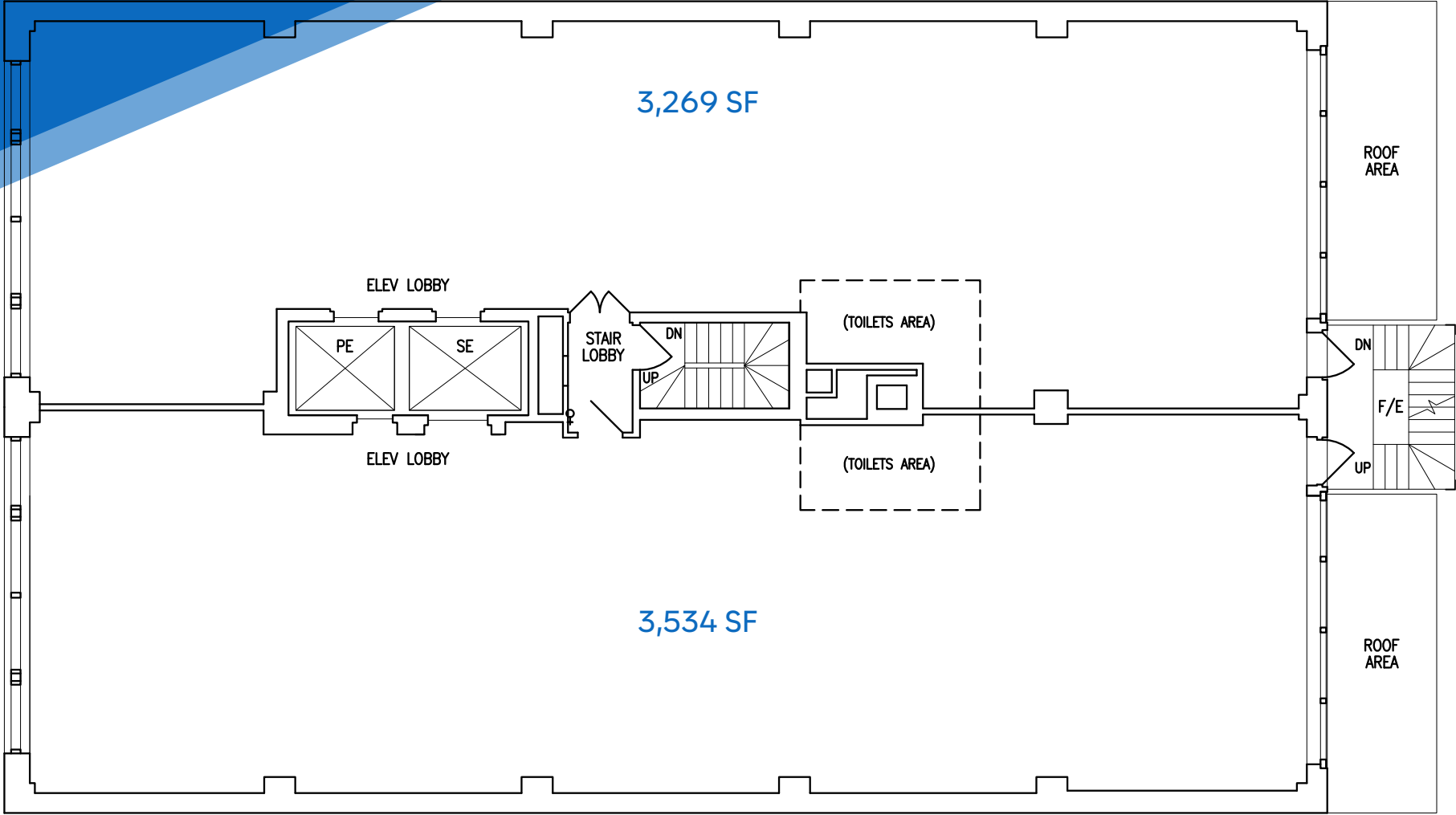


35 WEST 36TH STREET

MIDTOWN, NYC | Between Fifth and Sixth Avenues

OFFICE/RETAIL FOR LEASE





35 WEST 36TH STREET

MIDTOWN, NYC | Between Fifth and Sixth Avenues

OFFICE/RETAIL FOR LEASE



NEIGHBORS