

OFFICE  
SUBLEASE

6,900 SF

PLUG AND  
PLAY

FULL FLOOR  
PRESENCE

# 150 WEST 22<sup>ND</sup> STREET

Between 6<sup>th</sup> & 7<sup>th</sup> Avenues



## Availability:

- Entire 8<sup>th</sup> Floor: 6,900 SF
- Possession: Immediate
- Rent: Upon Request
- Term: Through June 2025

## Space Features:

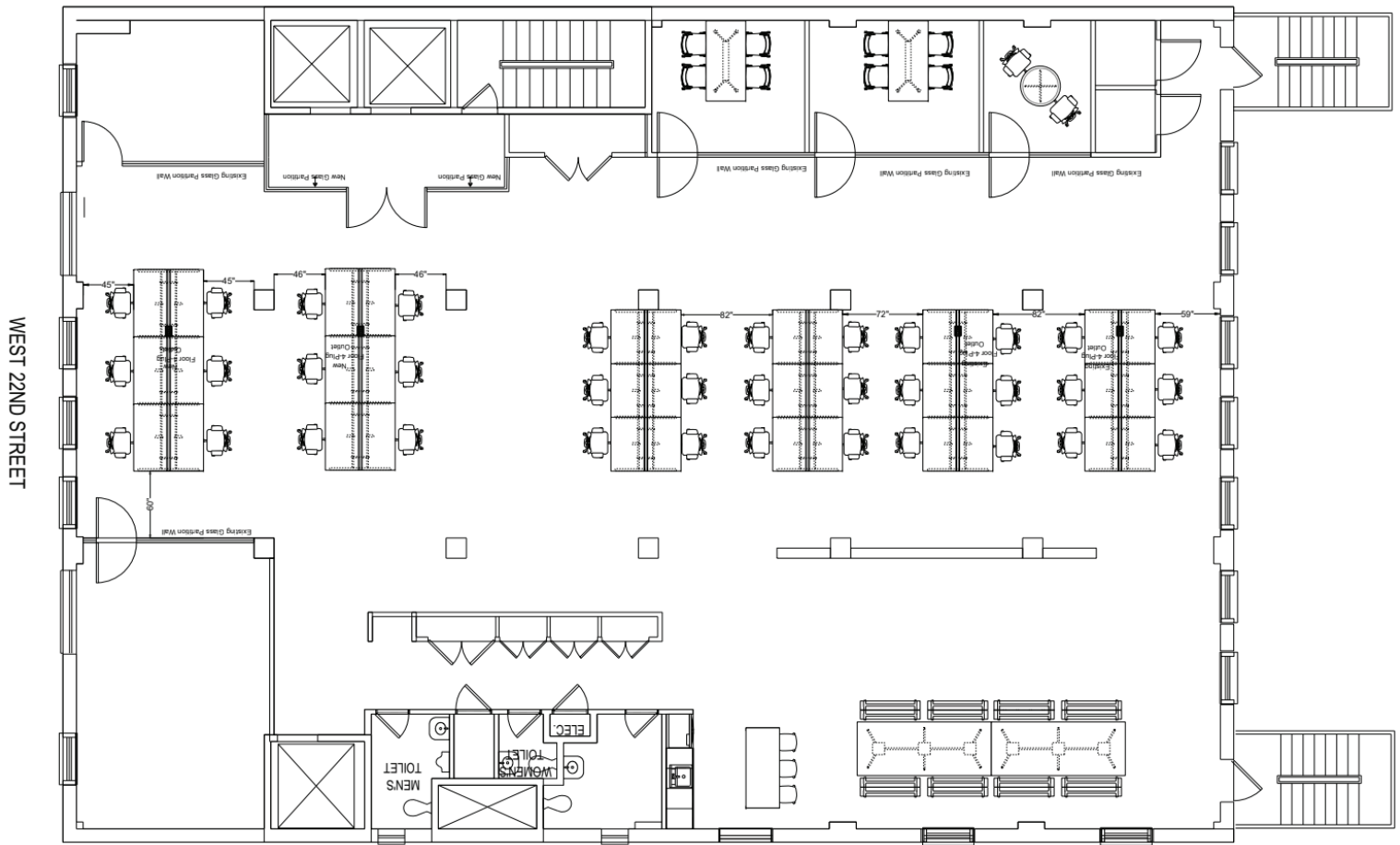
- Fully furnished
- 36 Workstations
- 1 conference room
- 4 meeting room/offices
- 2 phone rooms
- Pantry
- 2 private restrooms



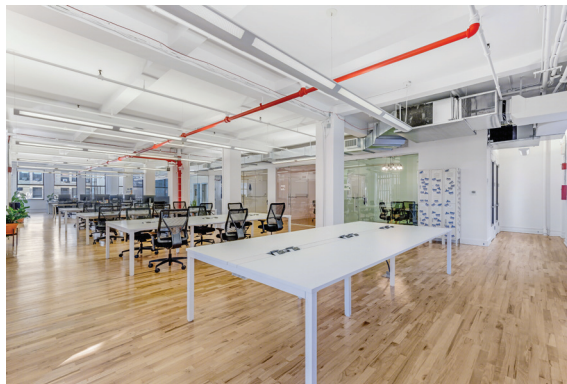


# 150 WEST 22<sup>ND</sup> STREET

Between 6<sup>th</sup> & 7<sup>th</sup> Avenues



Entire 8<sup>th</sup> Floor: 6,900 SF



## Building Features:

- Long-term, stable ownership
- Recently renovated freight/passenger hybrid elevator
- One block from the 1, F, M, and Path Trains