

99 Park Avenue

PARTIAL 11TH FLOOR | 14,240 RSF
RENT | UPON REQUEST
TERM | OCTOBER 2025



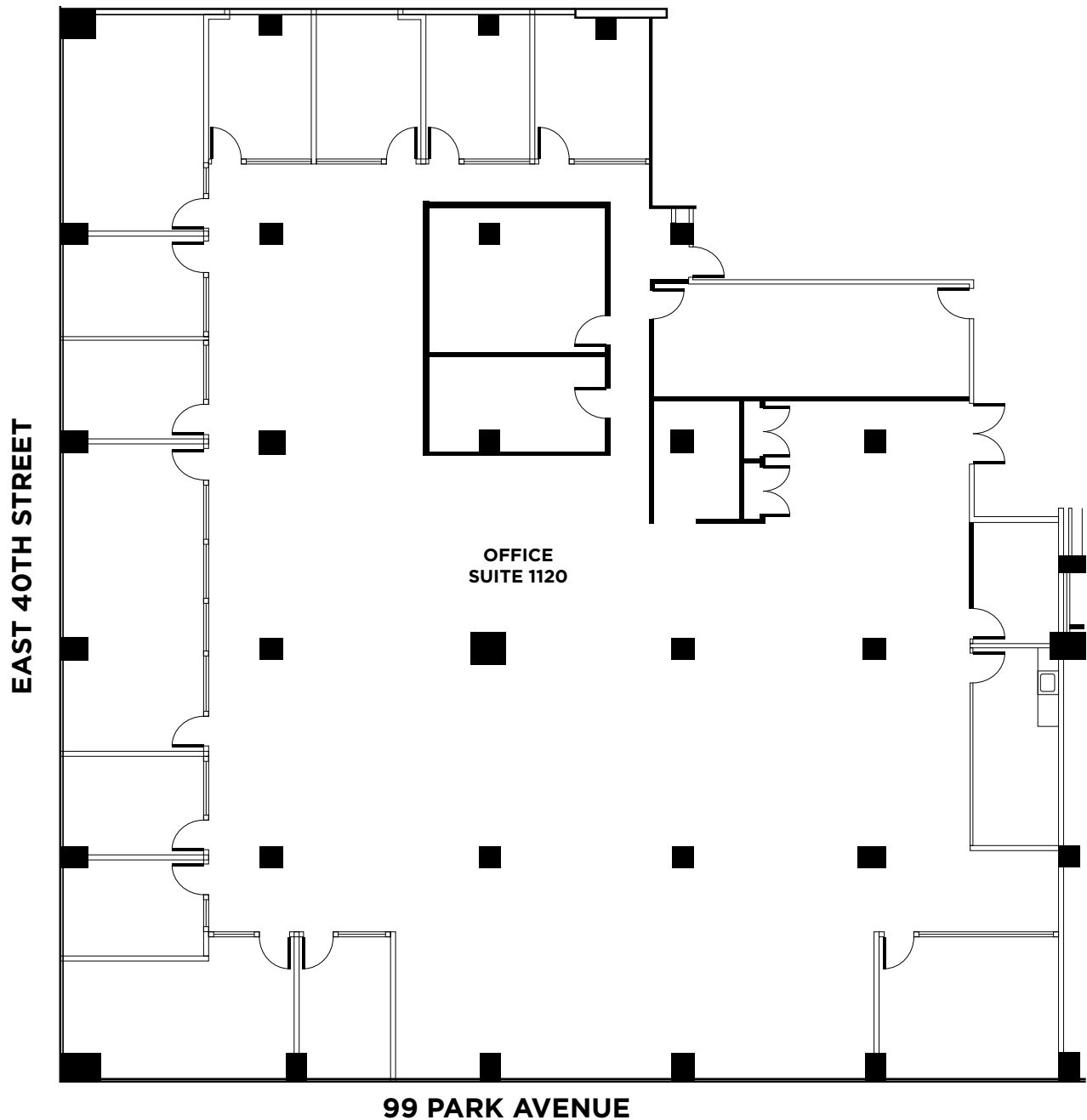
Space Highlights & Photos

- Bright corner suite featuring great views of Grand Central and Empire State Building
- Built, furnished and wired with 14 perimeter offices, 1 board room, and 30+ workstations
- Features all glass-fronted offices, reception area and 3 storage rooms



Floor Plan

PARTIAL 11TH FLOOR
14,240 RSF



Beautiful Views

