



Entire 14th Floor - Conference Room



Entire 16th Floor - Existing Conditions

29 West 38th Street

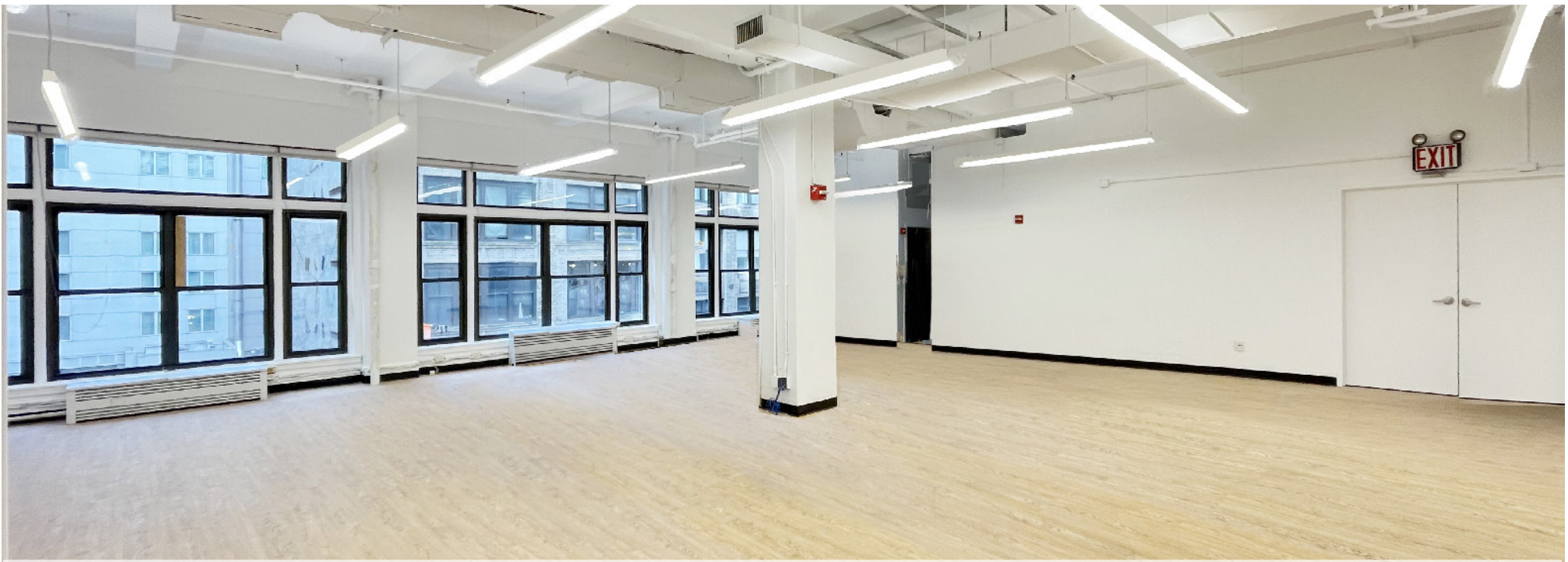
Between 5th & 6th Avenues

Full Floor Branding Opportunities
Move-In Ready Prebuilt Suites
and White Box Options

Short Walk to Grand Central, Penn Station, Port Authority
and Bryant Park **B D F M 4 5 6 7 N Q R W S** subway lines



Building Lobby



Suite 301 - Existing Conditions

Entire 14th Fl: 7,150 rsf

May 1, 2023

- Furnished, move-in ready bright space with multiple glass-front workspaces including (2) conference rooms and (2) meeting rooms
- Full wet pantry with seating area, open areas accommodate 39 workstations, private men's and women's restrooms, (1) phone room, lounge area



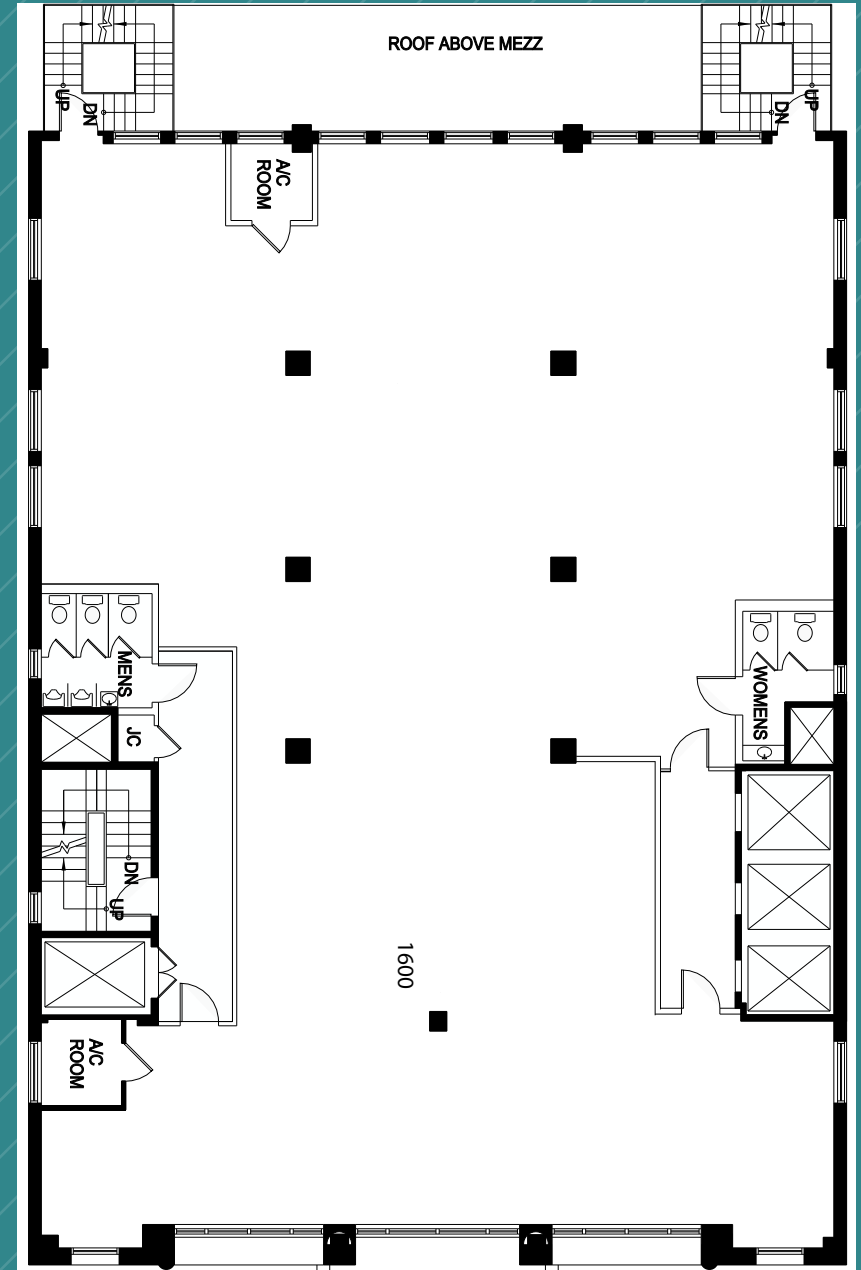
- Central location, walk to Bryant Park, Times Square, Herald Square, Madison Square Garden, and transportation hubs at Penn Station/Moynihan Train Hall and Grand Central Terminal
- Full floors feature 3-sides of operable, oversized windows offering great natural light — Expansion opportunities available
- Fully attended lobby, 24/7/365 access, tenant-controlled A/C

ENTIRE 16TH FLOOR - 7,150 RSF
(EXISTING CONDITIONS)



North/South Views

(BASE PLAN)



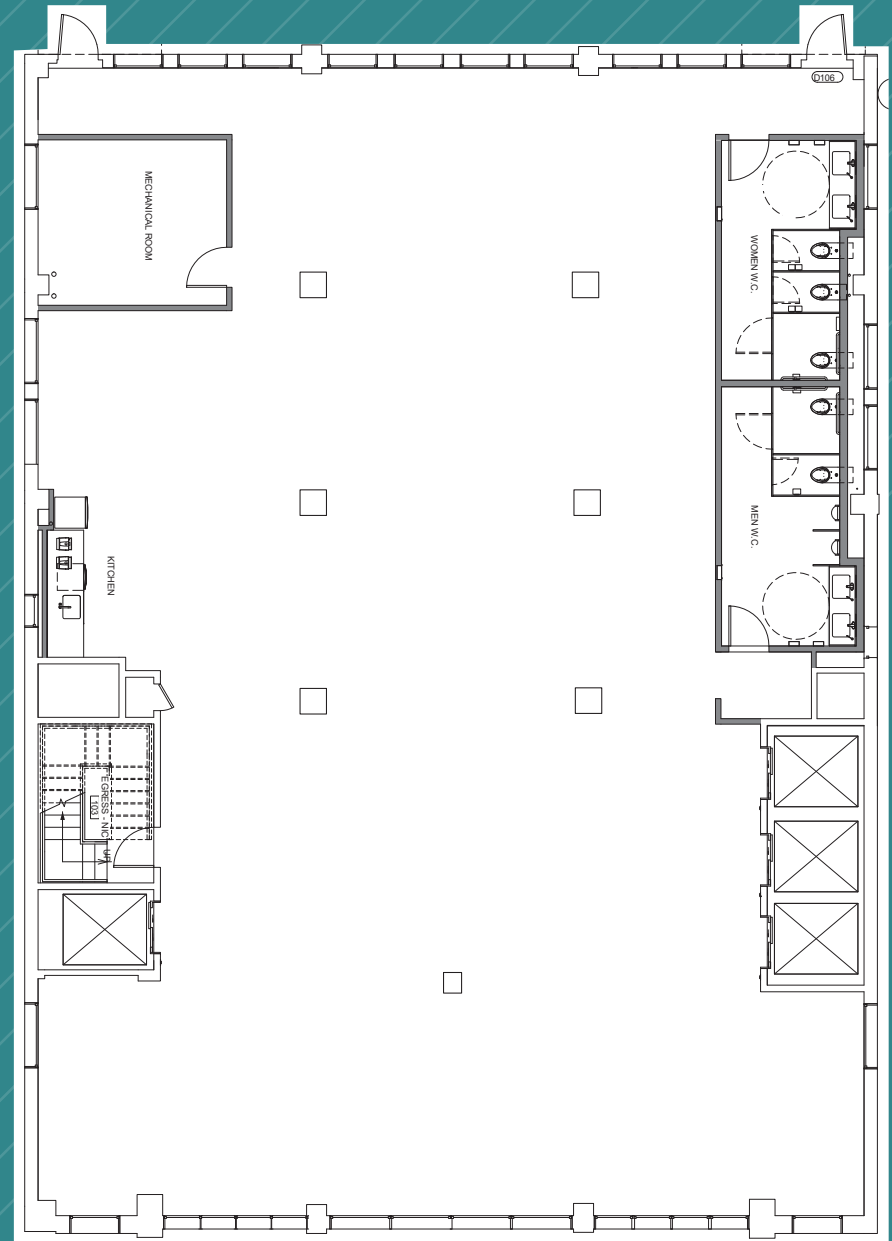
West 38th Street

Not to scale, for display purposes only

ENTIRE 14TH FLOOR - 7,150 RSF
(EXISTING CONDITIONS)



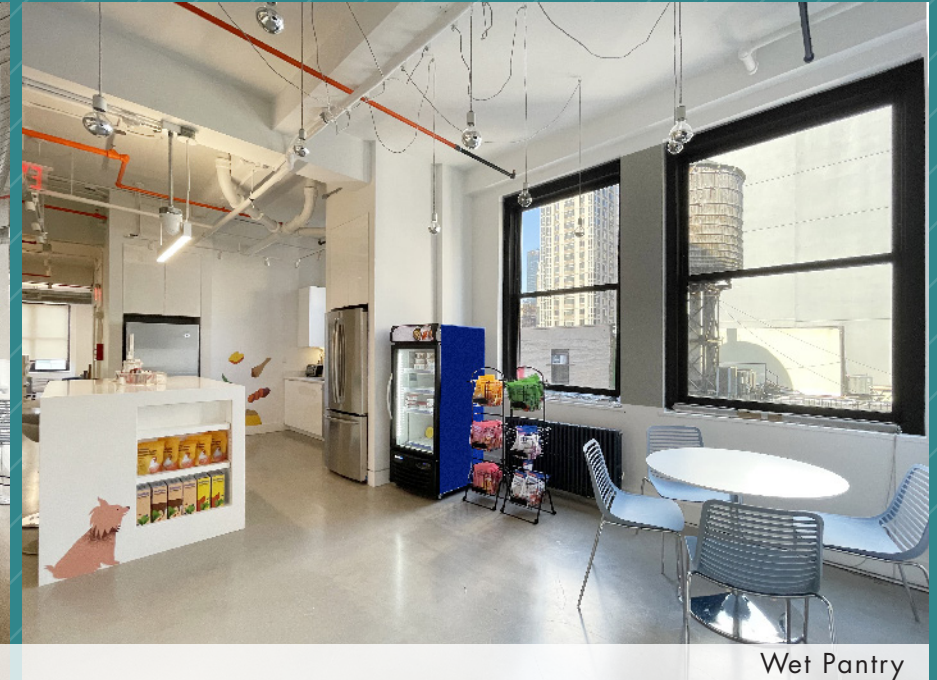
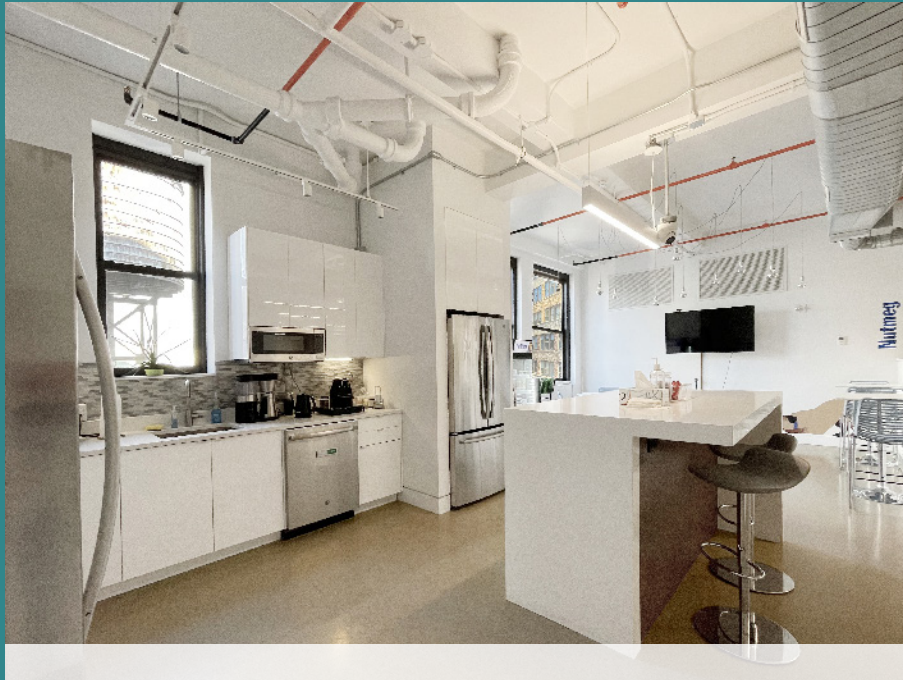
(BASE PLAN)



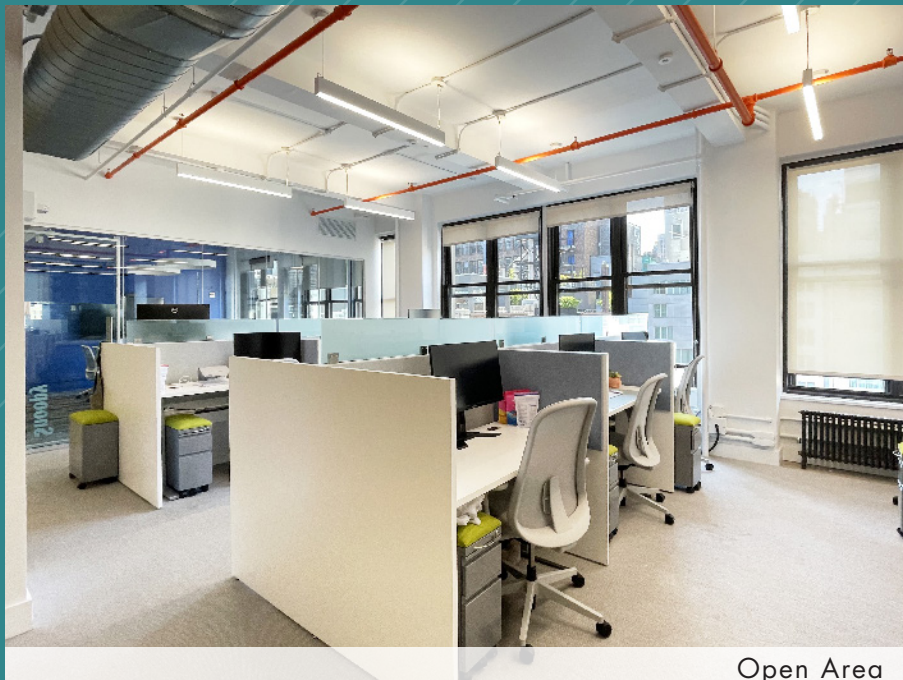
West 38th Street

Not to scale, for display purposes only

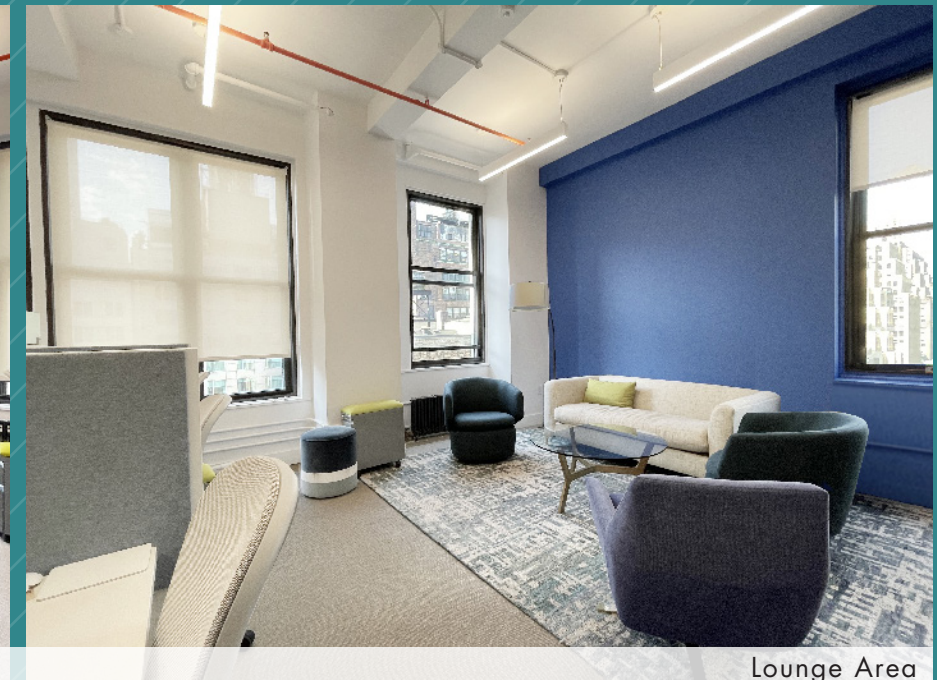
ENTIRE 14TH FLOOR - 7,150 RSF
(EXISTING CONDITIONS)



Wet Pantry



Open Area



Lounge Area

ENTIRE 14TH FLOOR - 7,150 RSF
(EXISTING CONDITIONS)



Glass-front Workspaces



Meeting Room



Men's Restroom



South View

LOCATED WITHIN MIDTOWN'S TRANSIT TRIANGLE

**Port Authority
Bus Terminal**
12 Mins Walking

**Moynihan
Train Hall**

**Penn
Station**
11 Mins Walking

Bryant Park
3 Mins Walking

29 West
38th Street

**Grand
Central
Station**
10 Mins Walking

4 5 6 7 S

