



Entire 2nd Floor - Conference Room



Entire 16th Floor - Existing Conditions

# 29 West 38th Street

Between 5th & 6th Avenues

Full Floor Branding Opportunities  
Move-In Ready Prebuilt Suites  
and White Box Options

Short Walk to Grand Central, Penn Station, Port Authority  
and Bryant Park **B D F M 4 5 6 7 N Q R W S** subway lines



Building Lobby



Suite 302 - Existing Conditions

Entire 2nd Fl: 7,153 rsf

Immediate

- Newly upgraded built space with (6) glass-front windowed offices and conference room, brand new wet pantry, new led lights,
- Large open area allows for flexible layout options, refinished hardwood floors throughout, updated private men's and women's restrooms

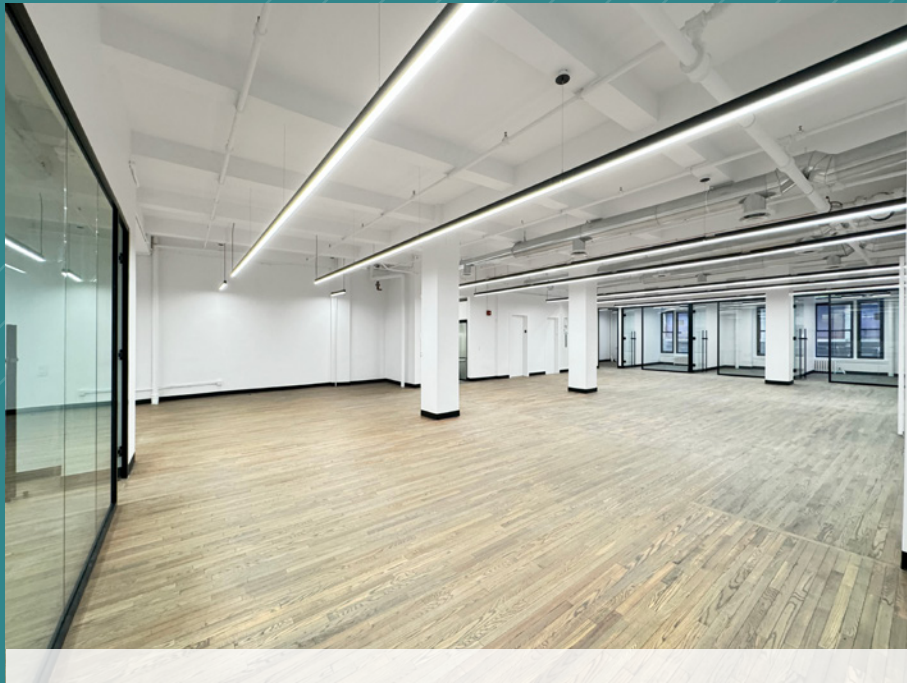


- Central location, walk to Bryant Park, Times Square, Herald Square, Madison Square Garden, and transportation hubs at Penn Station/Moynihan Train Hall and Grand Central Terminal
- Full floors feature 3-sides of operable, oversized windows offering great natural light — Expansion opportunities available
- Fully attended lobby, 24/7/365 access, tenant-controlled A/C

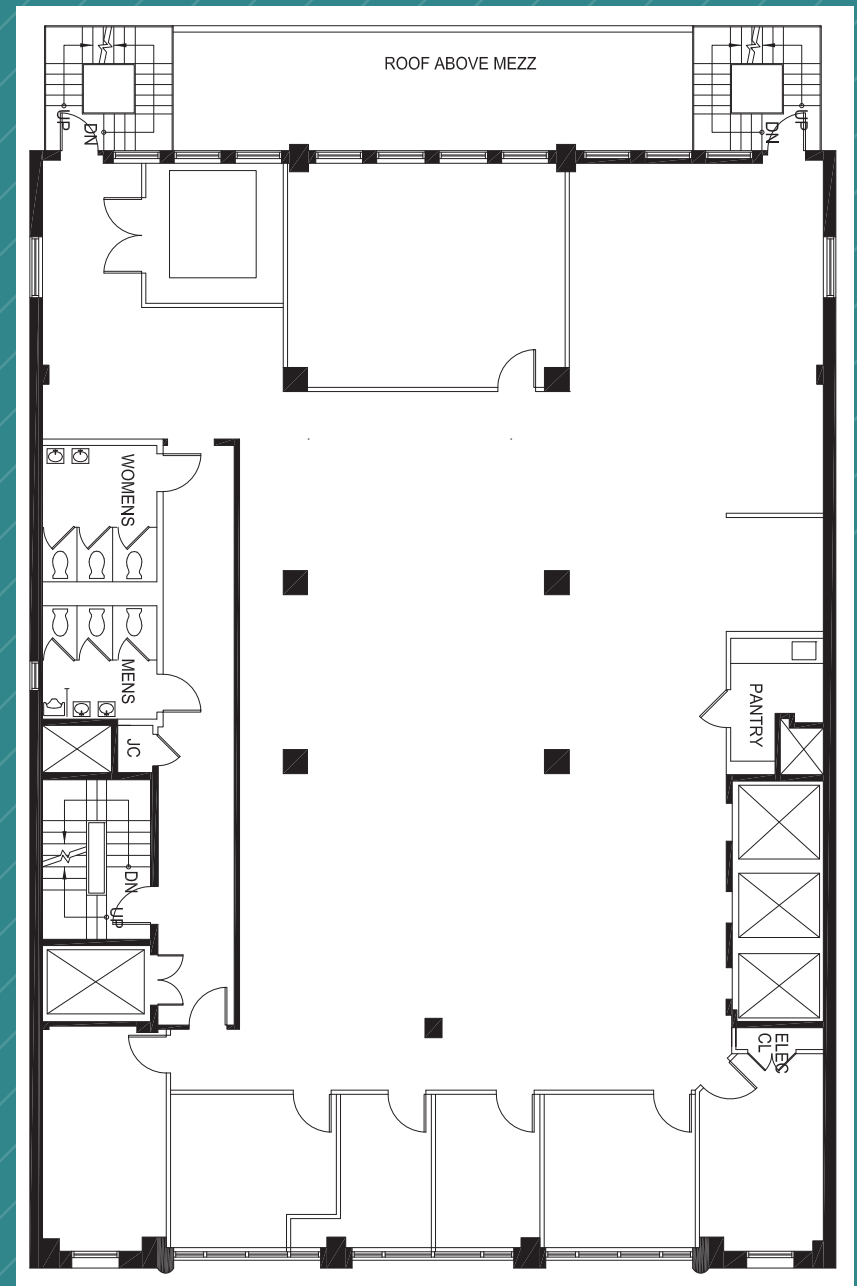
ENTIRE 2ND FLOOR - 7,153 RSF  
(EXISTING CONDITIONS)



Open Area



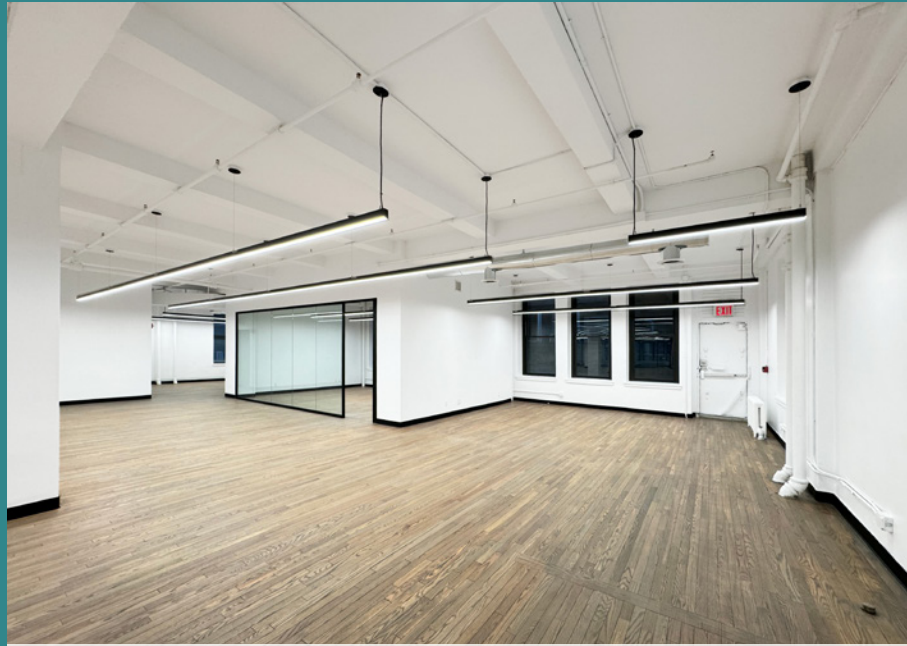
(AS-BUILT)



West 38th Street

(Floor plan not to scale, for display purposes only)

ENTIRE 2ND FLOOR - 7,153 RSF  
(EXISTING CONDITIONS)



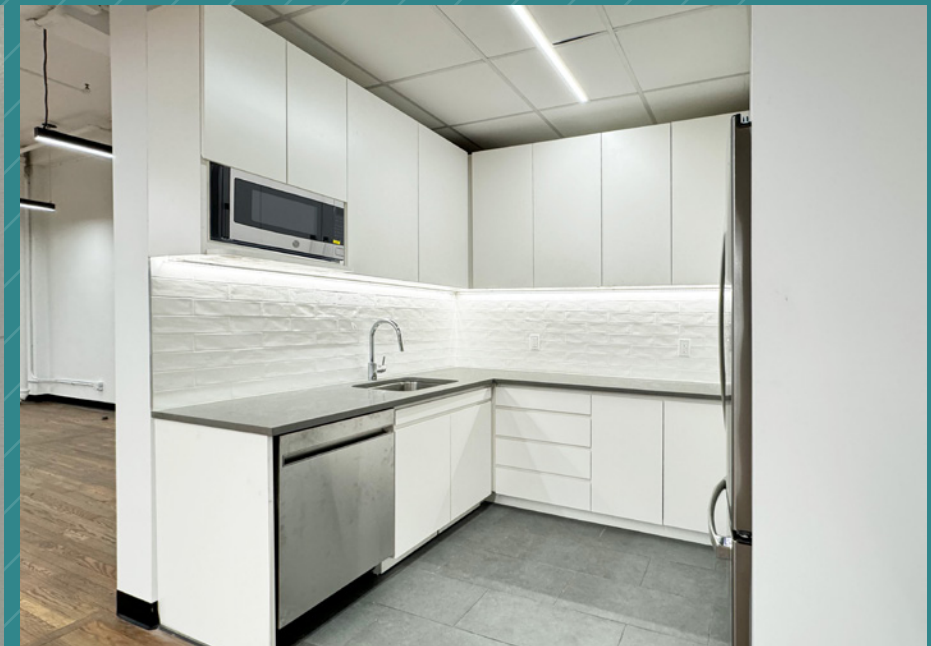
Open Area



Glass-Front Office



Updated Restrooms



New Wet Pantry

# LOCATED WITHIN MIDTOWN'S TRANSIT TRIANGLE

**Port Authority  
Bus Terminal**  
12 Mins Walking

**Moynihhan  
Train Hall**

**Penn  
Station**  
11 Mins Walking

**Bryant Park**  
3 Mins Walking

**Grand  
Central  
Station**  
10 Mins Walking

29 West  
38th Street

