

GREAT PRICE, GREAT SPACE – TURN-KEY

Rare, Plug & Play, Plaza District Availability



Space Profile

Size: **8,120 RSF**

Floor: **Partial 17th**

Rent: **Upon request**

Availability: **Immediate**

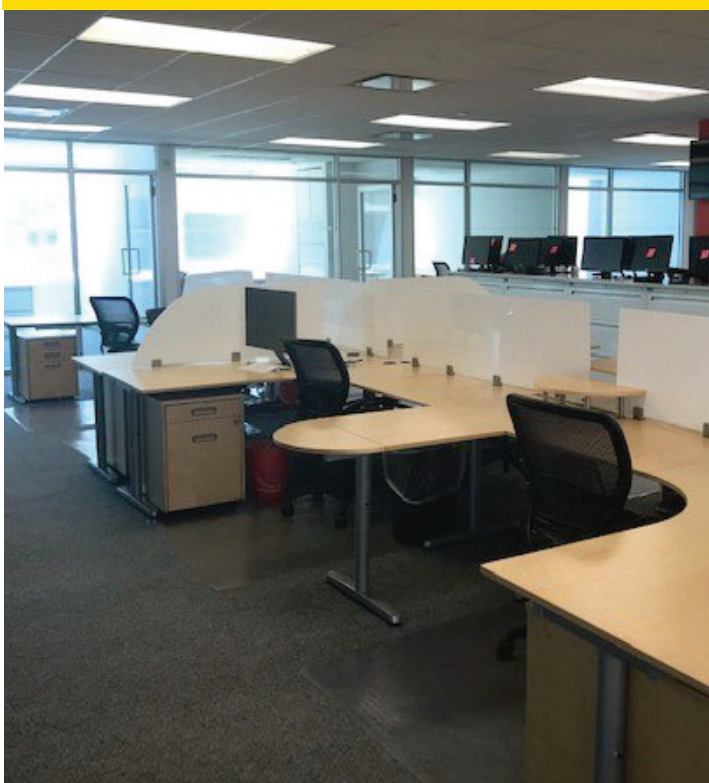
Term: **Negotiable**

[Click here to view interactive floorplan](#)

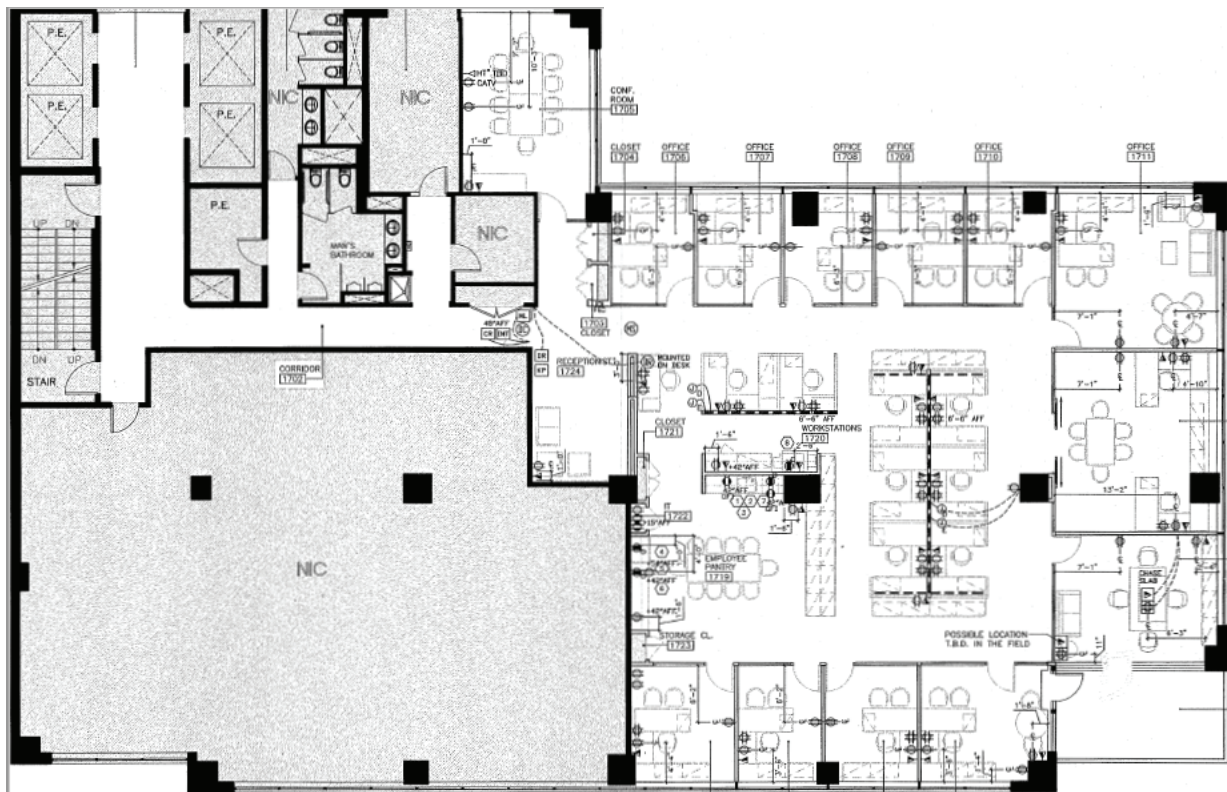
Key Highlights

- Steps from Central Park
- Good natural light and views
- High-end modern installation with glass-fronted offices, marble reception and large pantry – space is fully furnished

Plaza District Delmonico Plaza - 55 East 59th Street



[Click here to view interactive floorplan](#)



59th Street

Floor Plan Details

- 9** standard private offices
- 3** large private offices
- 2** conference rooms
- 10** workstations
(can be densified)