



For Sublease

420 Lexington Avenue

**Sublease
Premise**

Partial 18th Floor Suite 1820: 8,285 RSF

Term

Through December 31, 2026

Rental Rate: Upon request

**Space
Features**

- Available immediately
- Term through December 2026
- Built, plug & play with FF&E included
- Layout includes 14 offices, 1 conference room, 25 workstations, pantry and reception
- Direct access to Grand Central Terminal
- Contact for pricing

**Building
Features**

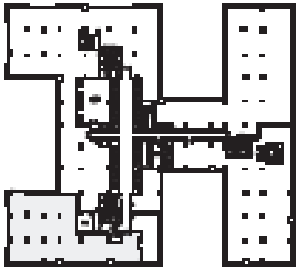
- 420 Lexington offers “Graybar19”, a newly constructed, tenant-only amenity center with a shared conference center, lounge seating and outdoor meeting space.
 - Direct access to Grand Central Metro North Station, LIRR and to all major subway lines.
-

For Sublease

Partial 18th Floor Suite 1820 – 8,285 RSF

Existing Conditions

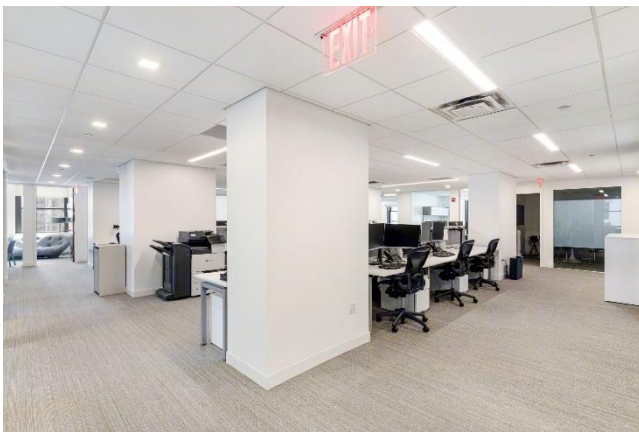
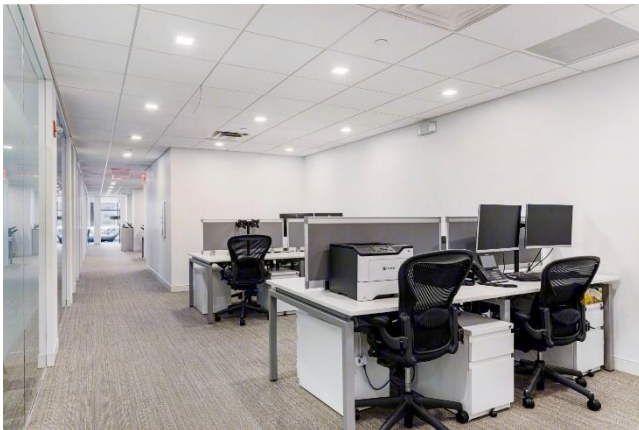
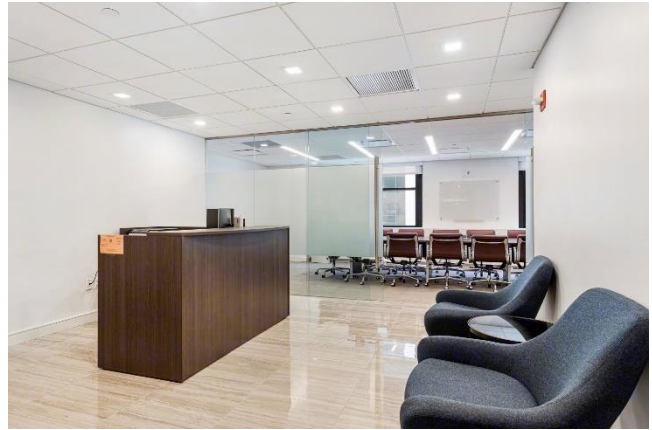
FLOOR KEY	
Total Offices	14
Conference Room	1
Workstations	25
Receptionist	1
Total Personnel	40



For Sublease

Partial 18th Floor Suite 1820 – 8,285 RSF

Space Images



For Sublease

Partial 18th Floor Suite 1820 – 8,285 RSF

Space Images

