

# 1155

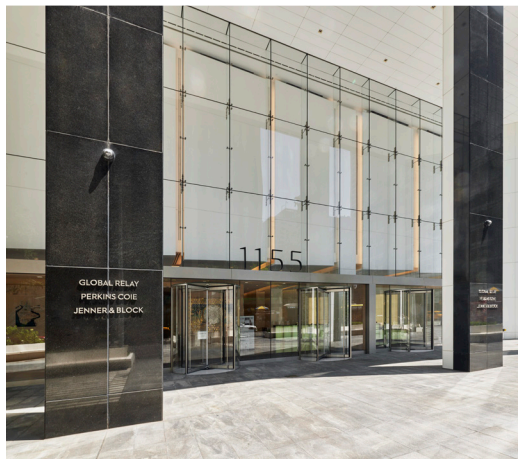
AVENUE OF THE AMERICAS

A VIEW FOR EVERY VISION

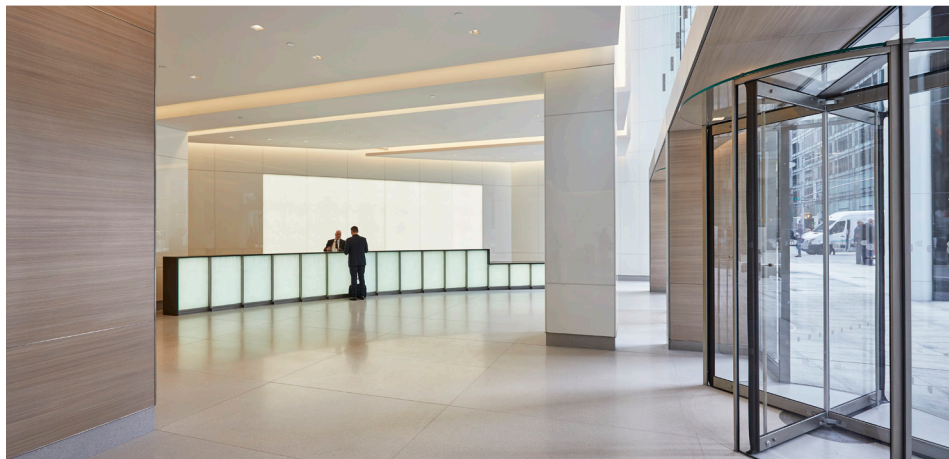
## PARTIAL FLOOR 11

### SUITE 1100

8,348 SF



ENTRANCE



LOBBY

#### AVAILABILITY FEATURES

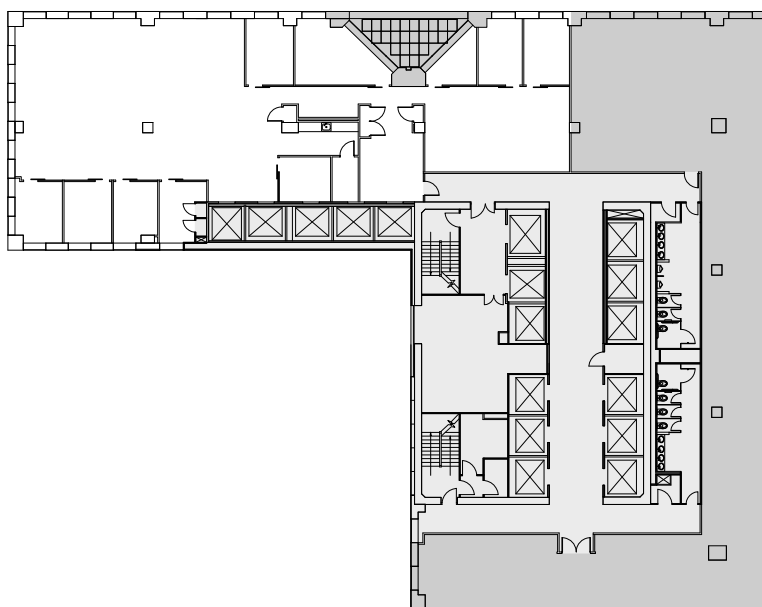
- Built Space
- Arranged Possession
- Potential to Combine With Adjacent Suite

#### PROPERTY FEATURES

- New Landscaped Plaza, Building Entrance, and Lobby
- Elevator Modernization Including Destination Dispatch Controls
- New Energy-Efficient Curtain Wall With Floor-to-Ceiling Clear Glazing at Chamfered Corners
- New Low-Iron Energy-Efficient Casement Windows
- Certified LEED Gold Under LEED v4 Existing Buildings: Operations + Maintenance
- Located at the Convergence of Bryant Park and Corporate Row — Mere Minutes From Grand Central Terminal, 16 Subway Lines, and Some of NYC's Best Dining and Entertainment

#### AS-BUILT PLAN

West 45<sup>th</sup> Street



Avenue of the Americas

West 44<sup>th</sup> Street

