



# FOR LEASE 61 WEST 23RD STREET

61 WEST 23RD STREET, NEW YORK, NY 10010



61W23



FOR LEASE

# 61 WEST 23RD STREET

61 WEST 23RD STREET, NEW YORK, NY 10010

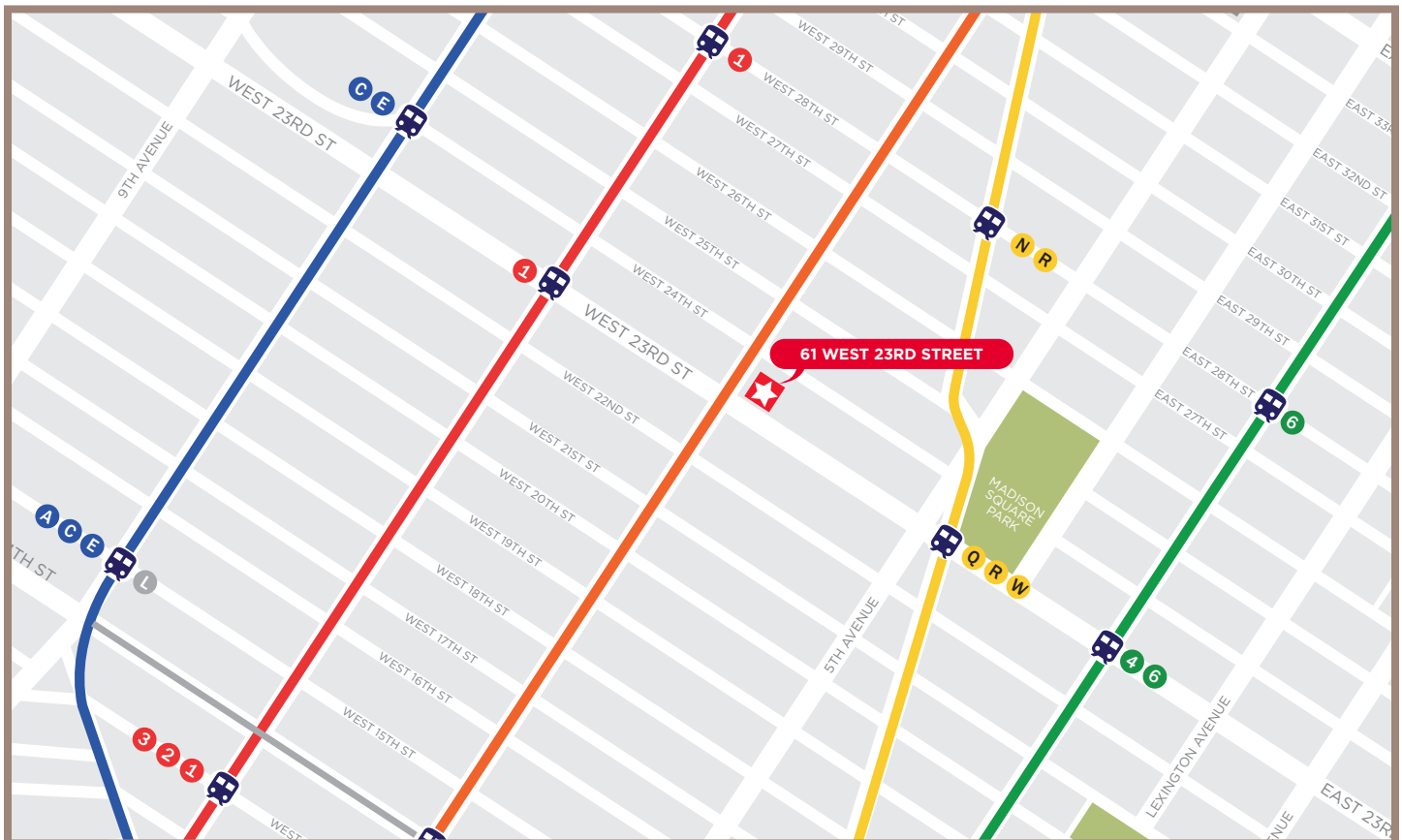


## PROPERTY HIGHLIGHTS

- Located between 5th and 6th Avenues just west of Madison Square Park
- Entire 3rd - 6th Floors, 8,367 RSF each floor
- Building underwent a complete restoration including two new lobbies
- High-end prebuilt finishes featuring a mix of conference rooms, breakout rooms, offices, pantry, and open area
- Immediate possession for floors 3 and 5, 4 and 6 prebuilds underway
- Loft Style office space with high ceilings and refinished wood floors
- Conveniently located in the Flatiron District

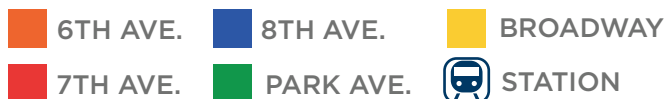


## LOCATION MAPS



In close proximity to all major subway lines and transit hubs

SUBWAY  
LEGEND



FOR LEASE

61 WEST 23RD STREET

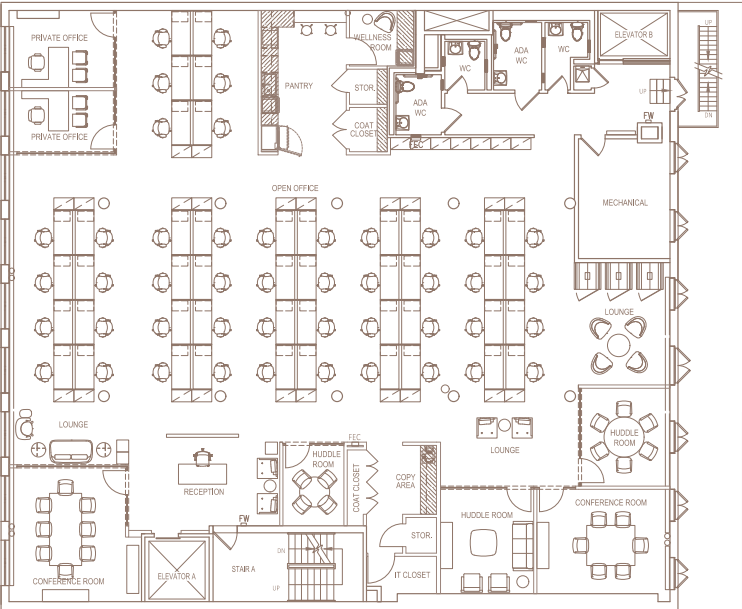
61 WEST 23RD STREET, NEW YORK, NY 10010



FLOOR PLAN

FLOOR 3 AND 5  
8,367 TOTAL RSF

PREBUILT

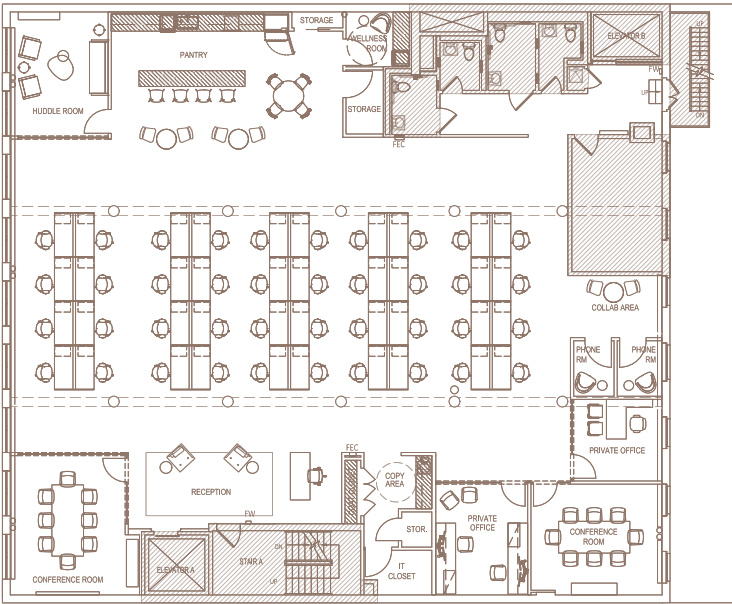


LEGEND:

TYPE	QTY
OFFICES	
PRIVATE OFFICE (1-PERSON)	2
WORKSTATIONS	
BENCHING (5'-6" X 2'-6")	46
COLLABORATION	
MEDIUM CONFERENCE (6-8 PPL)	2
Huddle Room	3
AMENITIES	
PANTRY	1
SUPPORT & STORAGE	
RECEPTION	1
IT CLOSET	1
WELLNESS ROOM	1
COPY AREA	1
COAT CLOSET	2
STORAGE CLOSET	2

FLOOR 4 AND 6  
8,367 TOTAL RSF

PREBUILT



LEGEND:

TYPE	QTY
OFFICES	
PRIVATE OFFICE (1-PERSON)	1
PRIVATE OFFICE (2-PERSON)	1
WORKSTATIONS	
BENCHING (5'-6" X 2'-6")	40
COLLABORATION	
MEDIUM CONFERENCE (6-8 PPL)	2
Huddle Room	1
PHONE ROOM	2
AMENITIES	
PANTRY	1
SUPPORT & STORAGE	
RECEPTION	1
IT CLOSET	1
WELLNESS ROOM	1
COPY AREA	1
COAT CLOSET	1
STORAGE CLOSET	2





**FOR LEASE**  
**61 WEST 23RD STREET**  
61 WEST 23RD STREET, NEW YORK, NY 10010

