

OKAY...FINE...ITS NOT 1 VANDY, BUT KOI'S CRISPY RICE IS JUST AROUND THE CORNER



Space Profile

Floor: **Entire 4th – 8,750 RSF**

Asking Rent: **Upon Request**

Possession: **Immediate**

Term: **9/30/2030**

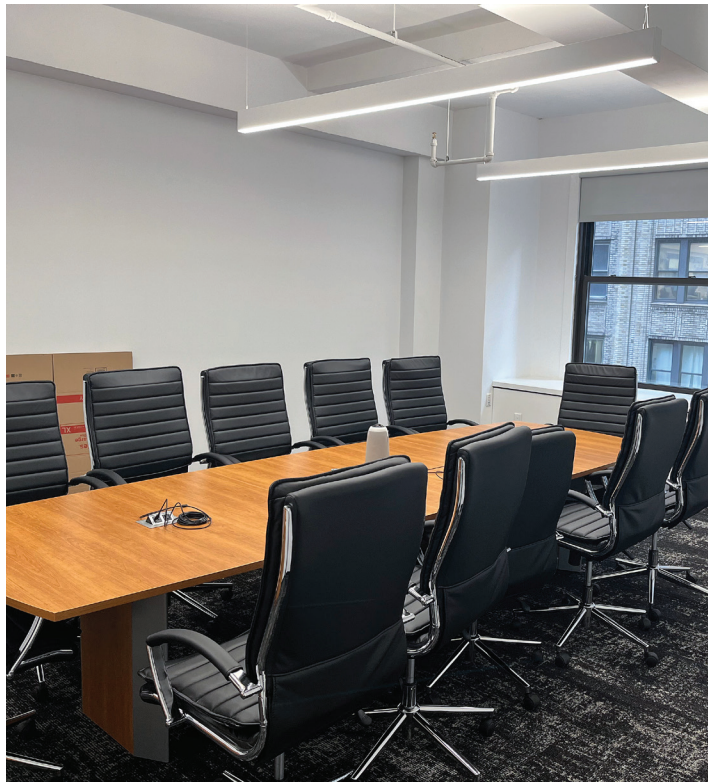
Key Highlights

- Financially stable Sublandlord and Landlord
- Newly built and furnished installation featuring glass front offices/conference rooms and open area
- Wood floors and exposed skim-coat ceilings
- Proximate to Penn Station and Grand Central Terminal

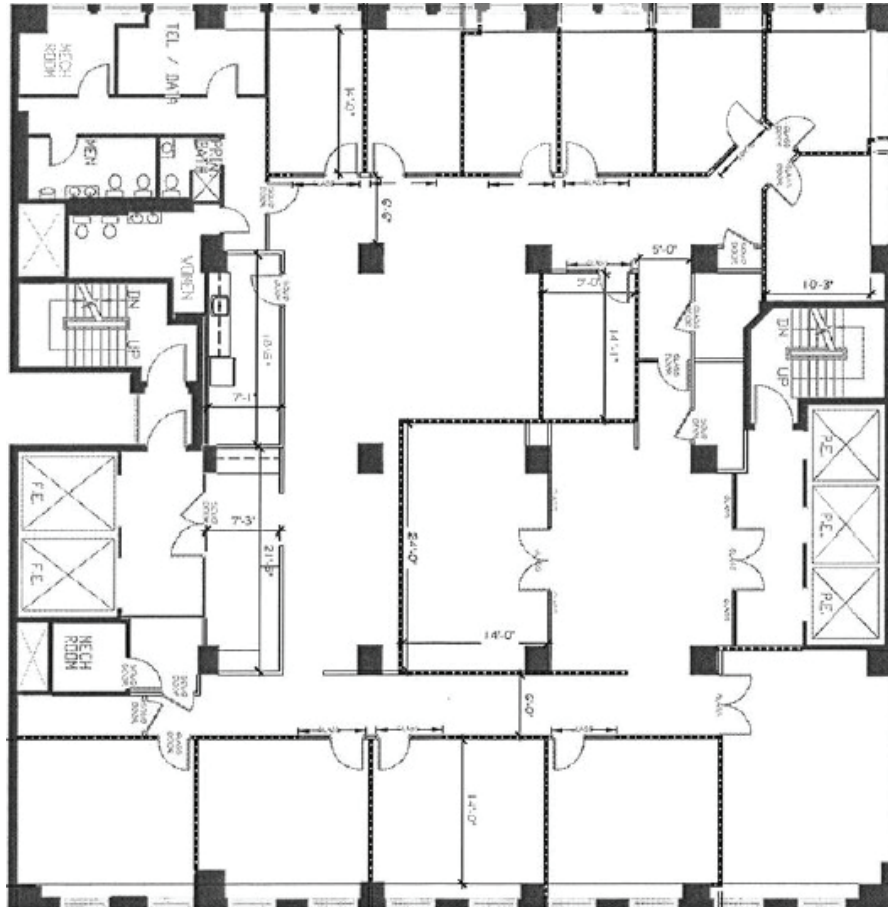
SUBLEASE 55 West 39th Street



SUBLEASE 55 West 39th Street



Entire 4th
8,750 RSF



Space Overview

- 12** windowed offices
- 2** conference rooms
- open area for approximately 10 workstations
- nicely appointed pantry