



SUBLEASE | THROUGH AUGUST 31ST, 2026

667 Madison Avenue

8,779 RSF | ENTIRE 21ST FLOOR



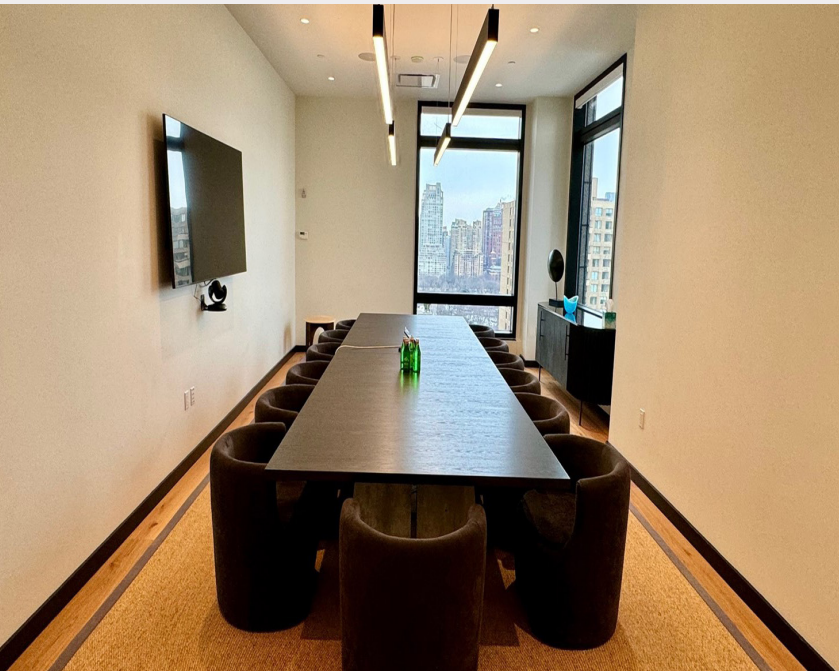
SUBLEASE | THROUGH AUGUST 31ST, 2026

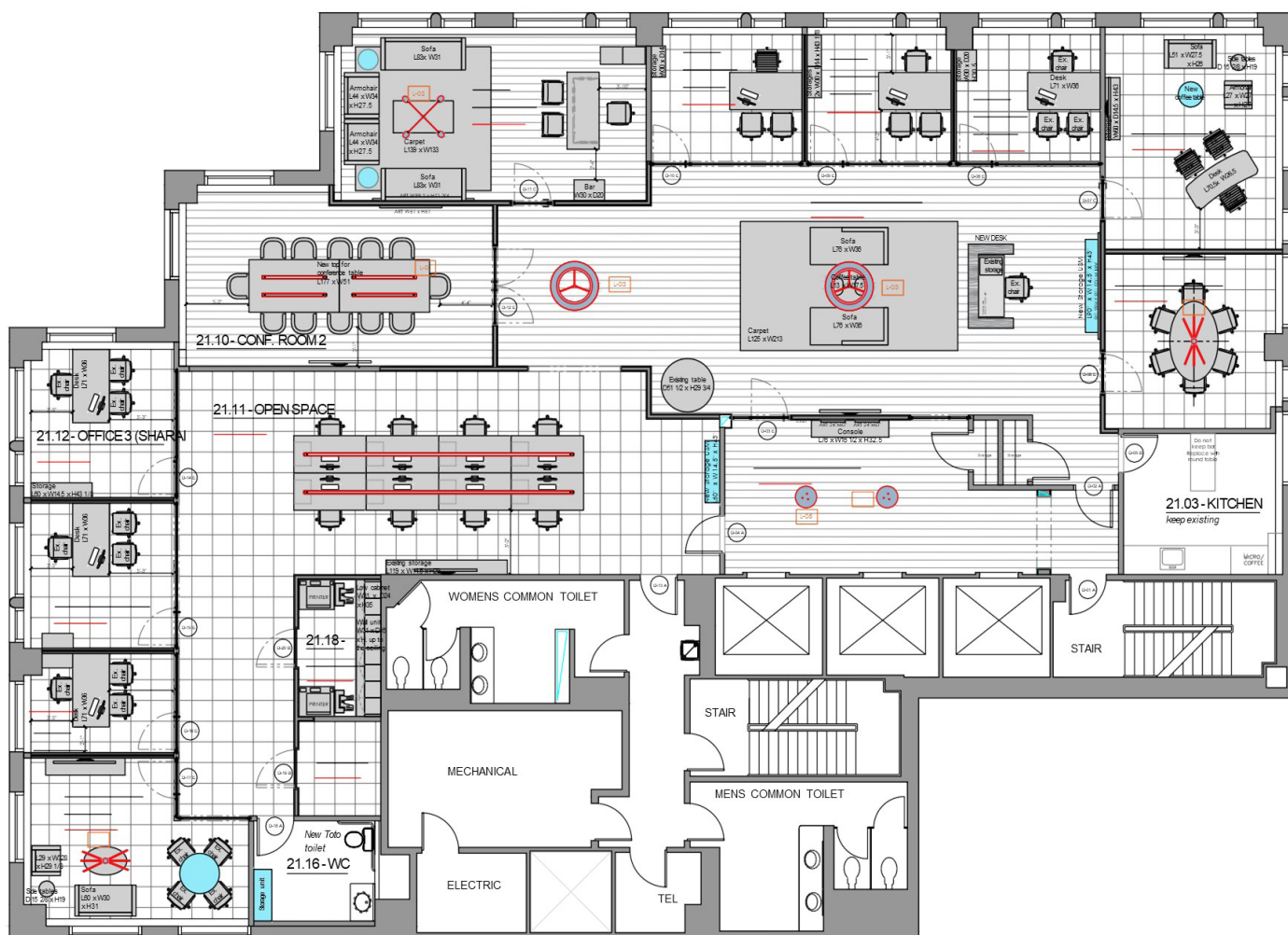
667 Madison Avenue

8,779 RSF RSF | ENTIRE 21ST FLOOR

Space Details

- Newly built full tower floor sublease available in boutique trophy building.
- Built less than 2 years ago, the space features very high end finishes & furniture with sweeping views of Central Park.
- Building amenities include a fully equipped fitness center including a Peloton spin studio and a Golf Club, featuring the latest golf simulation technology.





FLOOR PLAN

8,779 RSF | ENTIRE 21ST FLOOR

- 9 windowed offices, all with exceptional views and can be easily converted into additional break out rooms
- 1 large board room
- 1 conference room
- Large reception area with lounge
- Private executive bathroom
- New pantry
- Open area for 8+