

500 WEST 25TH ST

SOUTHWEST CORNER OF 25TH STREET & 10TH AVENUE



PRIME CHELSEA LOCATION

500 WEST
25TH ST

SIZE

Ground Floor: 1,844 sq ft

Lower Level: 820 sq ft

Total Interior: 2,664 sq ft

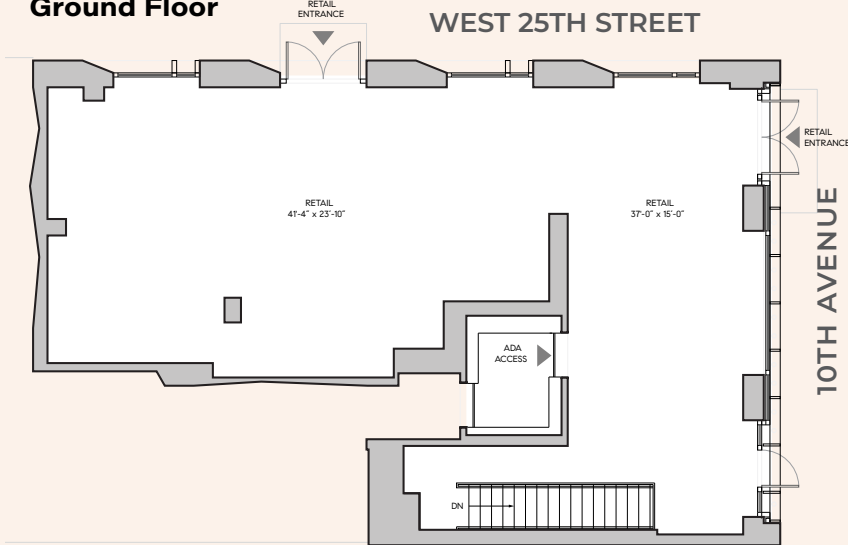
CEILING HEIGHT

Ground Floor: 16' ceilings

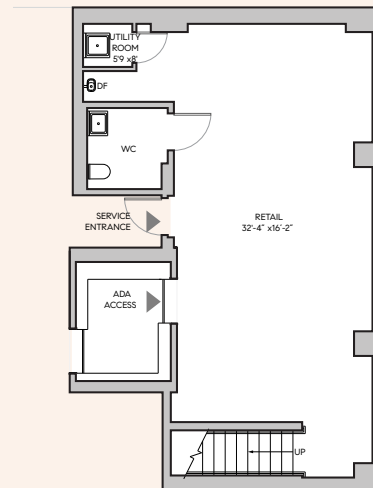
Lower Level: 10' ceilings

RETAIL SPACE

Ground Floor



Lower Level



- In the heart of the West Chelsea Arts District featuring numerous galleries
- Access the street from Avenues School
- Conveniently located adjacent to The High Line
- Entrances on 25th Street and 10th Avenue
- Over 36,000 car-per-day at this intersection
- New construction - building completed in 2020
- Elevator provides lower level access

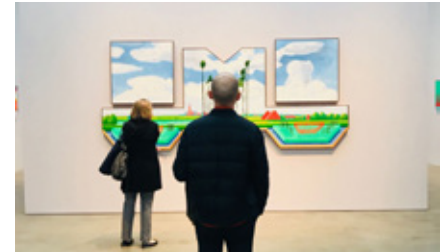


THE NEIGHBORHOOD

500 WEST 25TH ST



Chelsea Arts District



THE AREA

500 WEST 25TH ST



\$176,895
Average household
income

400,677
Employees
within 1 mile

130,686
Residents
within 1 mile

36,000+
Cars pass by the
location every week



INTERIOR VIEWS

500 WEST
25TH ST

