



50

WEST 23RD
STREET

Partial 9th Floor
9,000 RSF
Available

RETAIL FOR LEASE
50 WEST 23RD STREET
212.741.2500

RETAIL FOR LEASE
50 WEST 23RD STREET
212.741.2500

ALTS
METAL & WOOD
BUILDING



Partial 9th Floor: 9,000 RSF

- Below market deal in the heart of Midtown South
- Unique opportunity for a boutique customized suite
- T.I. package available
- Direct elevator access to the oversized roof deck
- Term through April 29, 2027
- Direct extension available



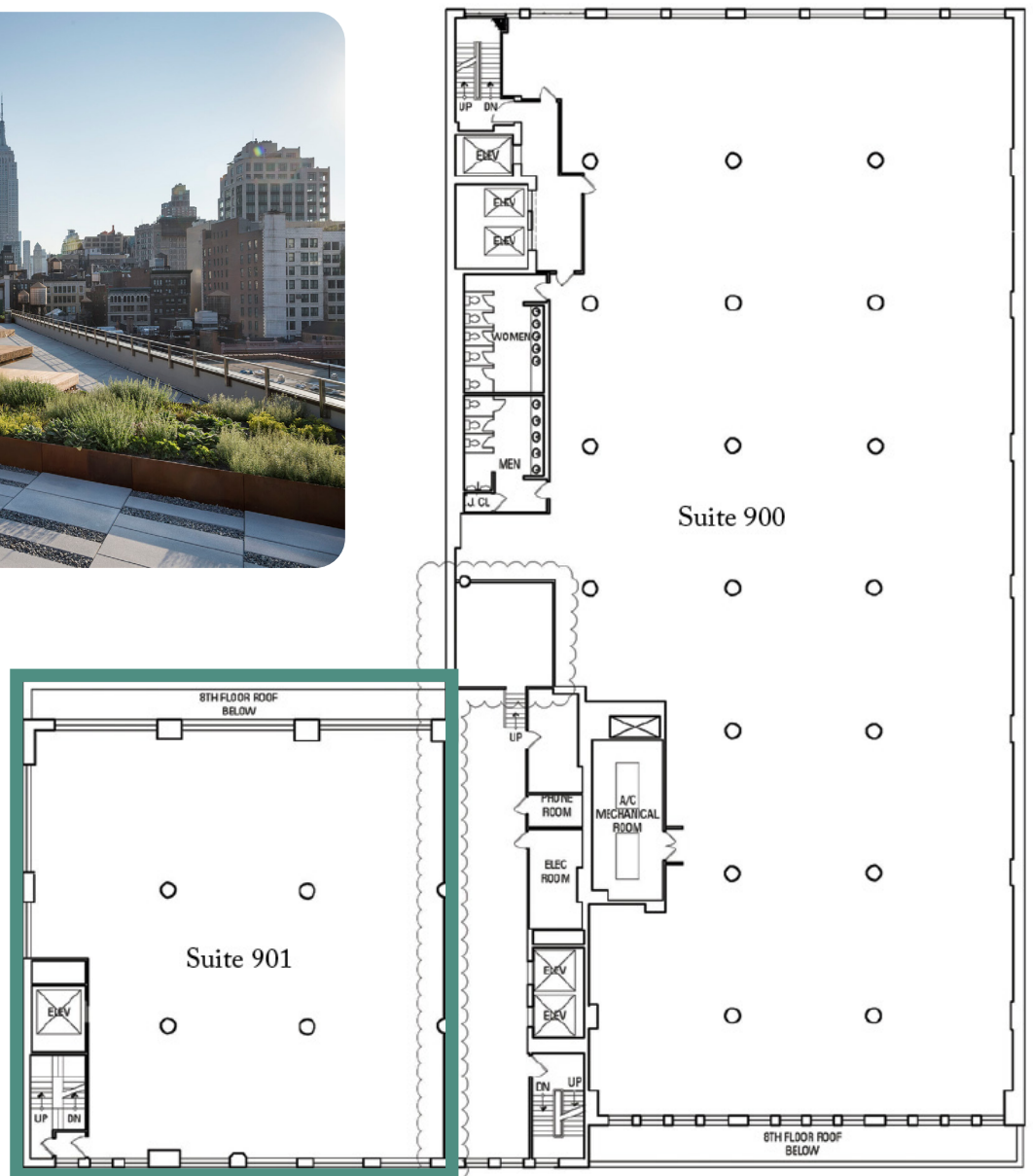
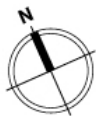
Partial 9th Floor Plan

30,471 RSF

50 WEST 23RD STREET



West 23rd Street



West 22nd Street