

414 West 14th Street

Lease the Entire 2nd Floor
9,130 RSF with an Exclusive Outdoor Terrace

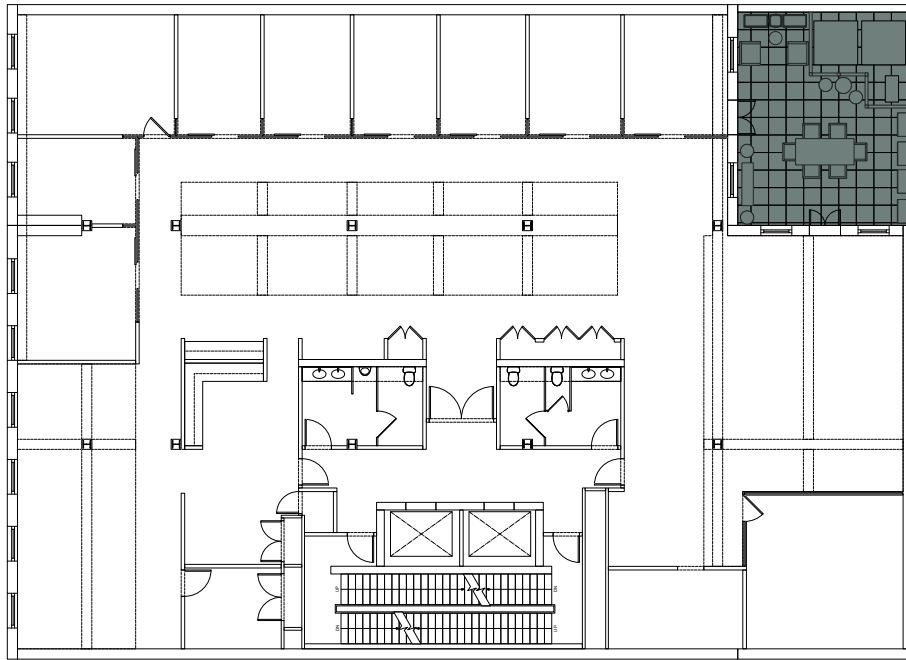


Lease Term | Negotiable

Available | Immediately

Asking Rent | Upon Request

Floor Plan



Space Features

- Pre-built full floor with high end finishes
- Plug and play opportunity
- Exclusive outdoor terrace
- Full-height glass offices
- Polished concrete floors / exposed ceilings
- Oversized windows / high ceilings
- Modern ADA bathrooms

Property Features

- Prime Meatpacking District location
- Modernized loft building with new lobby
- Excellent transportation access (A/C/E, L trains)

Space Photos



Area Map



Exclusive Outdoor Terrace

