

# 565 Fifth Avenue

Corner of 46<sup>th</sup> Street & Fifth Avenue



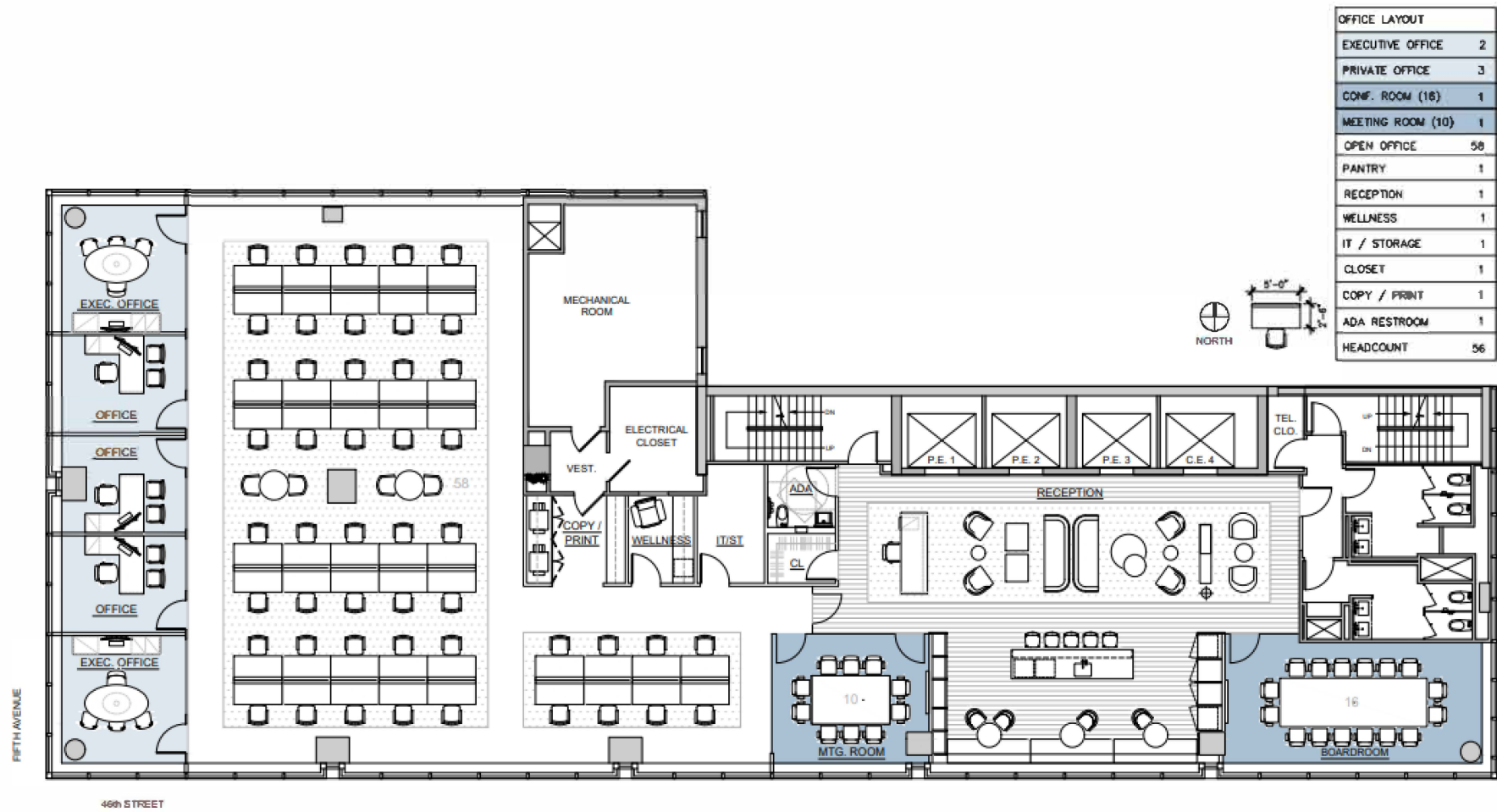
Availabilities					
Floor(s)	Size (RSF)	Possession	Rent/RSF	Term	Lease Type
					Direct
Entire 22 <sup>nd</sup>	9,280	Sep 2024	\$95.00	10 years	Direct
					Direct
Entire 20 <sup>th</sup>	9,280	May 2024	\$85.00	10 years	Direct
Entire 16 <sup>th</sup>	9,280	May 2024	\$85.00	10 years	Direct
Entire 15 <sup>th</sup>	9,280	May 2024	\$100.00	10 years	Direct
Entire 12 <sup>th</sup>	11,419	May 2024	\$80.00	10 years	Direct
Entire 8 <sup>th</sup>	18,205	May 2024	\$75.00	10 years	Direct
					Direct

Space Comments

Building Size	370,000 RSF   30 Floors
Owner	Stawski Partners
Year Built	1992
Notable Tenant(s)	<div>— Signature Bank</div> <div>— Morvillo Abramowitz</div>

- Entire 21<sup>st</sup> Floor: Landlord in the process of prebuilding this floor. To be delivered Q1 2024. Space will be built with 2 executive offices, 3 private offices, 1 conference room (15 people), 1 meeting room (10 people), and open space for 58 people.
- Entire 16<sup>th</sup> Floor: Existing installation built with 15 offices, 1 conference room, and open space
- Entire 15<sup>th</sup> Floor: Floor features a large outdoor space component with 3 entrances. Existing installation to be demolished. Landlord will turn-key
- Entire 12<sup>th</sup> Floor: Installation to be demolished. Landlord will turn-key using Fogarty Finger finishes
- Entire 8<sup>th</sup> Floor: Installation to be demolished. Landlord will turn-key using Fogarty Finger finishes

# 565 Fifth | 21<sup>st</sup> Floor Prebuilt Plan



OFFICE LAYOUT	
EXECUTIVE OFFICE	2
PRIVATE OFFICE	3
CONF. ROOM (16)	1
MEETING ROOM (10)	1
OPEN OFFICE	58
PANTRY	1
RECEPTION	1
WELLNESS	1
IT / STORAGE	1
CLOSET	1
COPY / PRINT	1
ADA RESTROOM	1
HEADCOUNT	56

## 565 Fifth | Prebuilt Finishes



**RECEPTION - ELEVATOR LOBBY**  
565 FIFTH AVENUE - PREBUILD PROGRAM

565 FIFTH AVENUE - PREBUILD PROGRAM  
RECEPTION - ELEVATOR LOBBY

## 565 Fifth| Prebuilt Finishes



RECEPTION - EAST  
565 FIFTH AVENUE - PREBUILD PROGRAM

## 565 Fifth| Building Standard Finishes



RECEPTION - WEST  
565 FIFTH AVENUE - PREBUILD PROGRAM

303.855.5555  
a | 565 FIFTH AVENUE



## 565 Fifth| Prebuilt Finishes



RECEPTION - PANTRY  
565 FIFTH AVENUE - PREBUILD PROGRAM

FOGARTY FINGER  
architecture | interiors

## 565 Fifth| Prebuilt Finishes



**BOARDROOM - OPT 1**  
565 FIFTH AVENUE - PREBUILD PROGRAM

## 565 Fifth| Prebuilt Finishes





## 565 Fifth | Prebuilt Finishes



**PHONE ROOMS**  
565 FIFTH AVENUE - PREBUILD PROGRAM

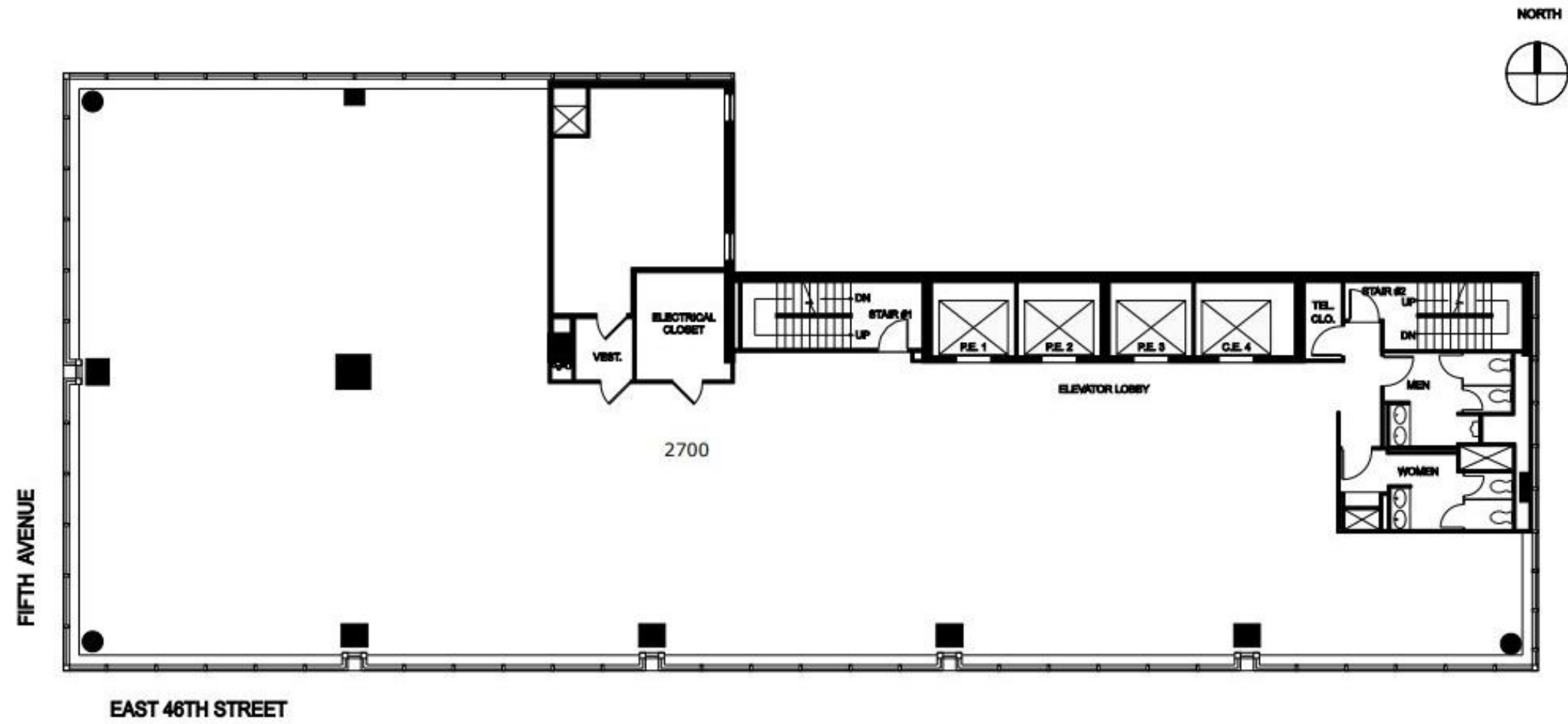
## 565 Fifth| Prebuilt Finishes



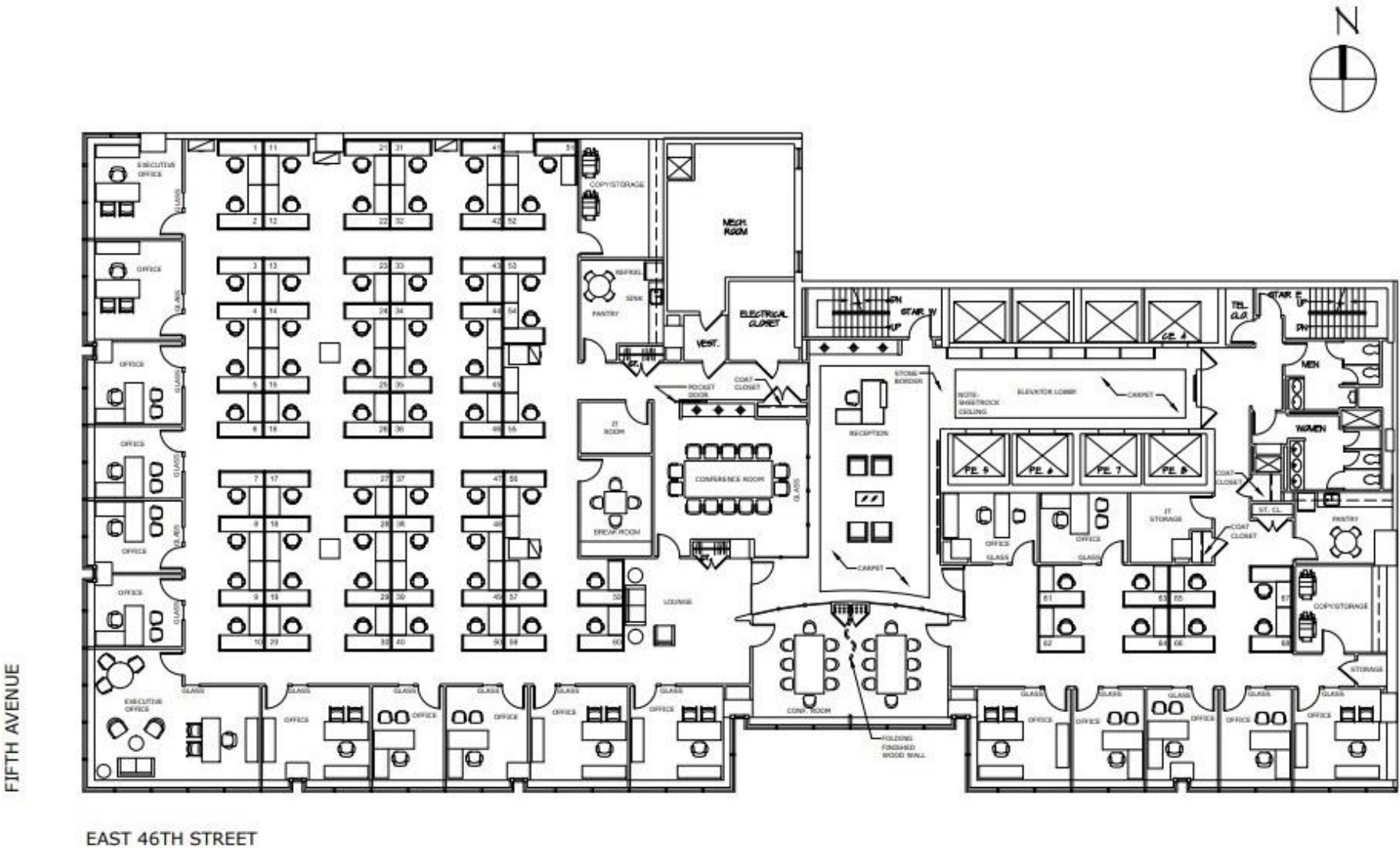
565 Fifth| 27<sup>th</sup> Floor Existing Conditions



# 565 Fifth Avenue—21/27 Core and Shell Plan

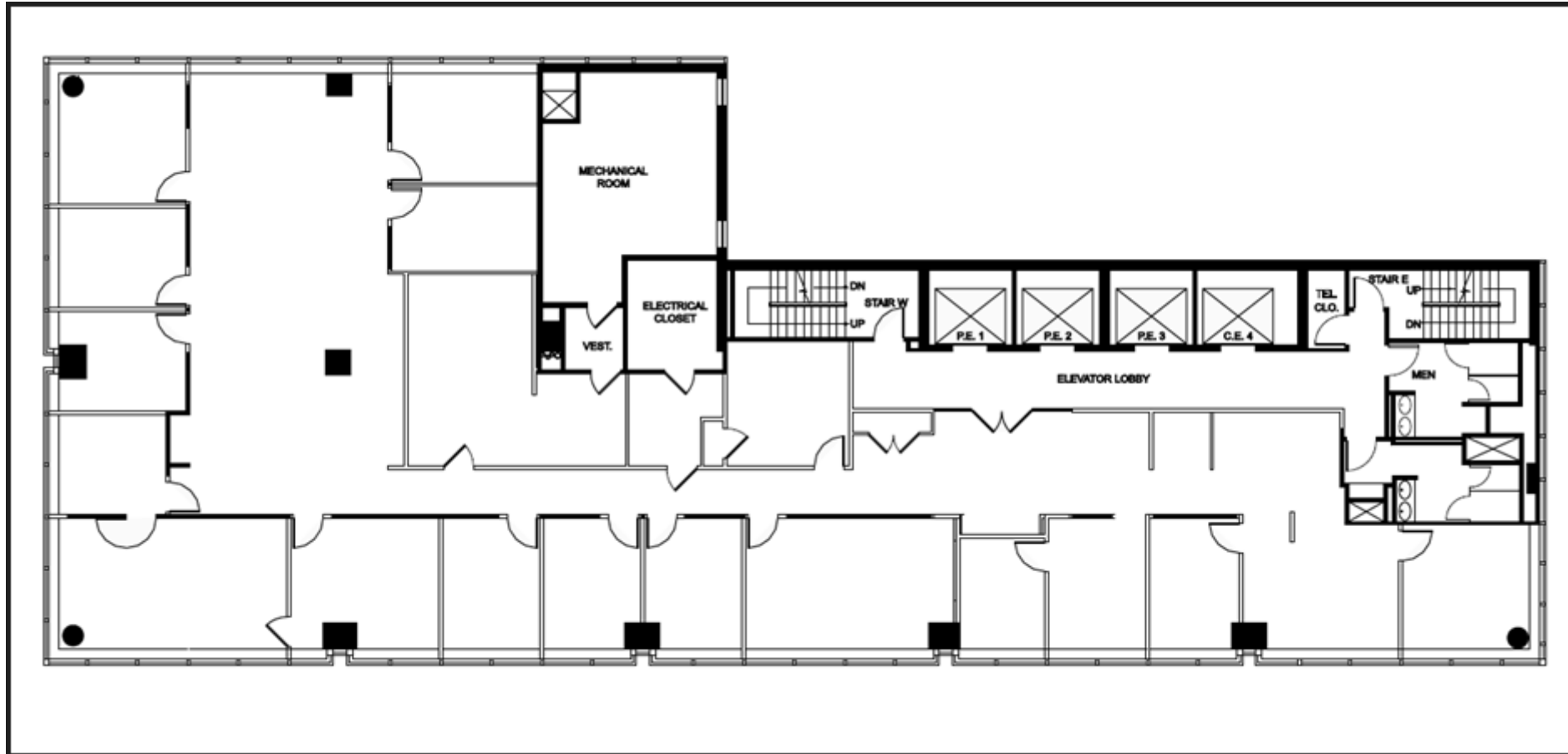


565 Fifth Avenue—6<sup>th</sup> Floor (18,205 RSF) Test-Fit

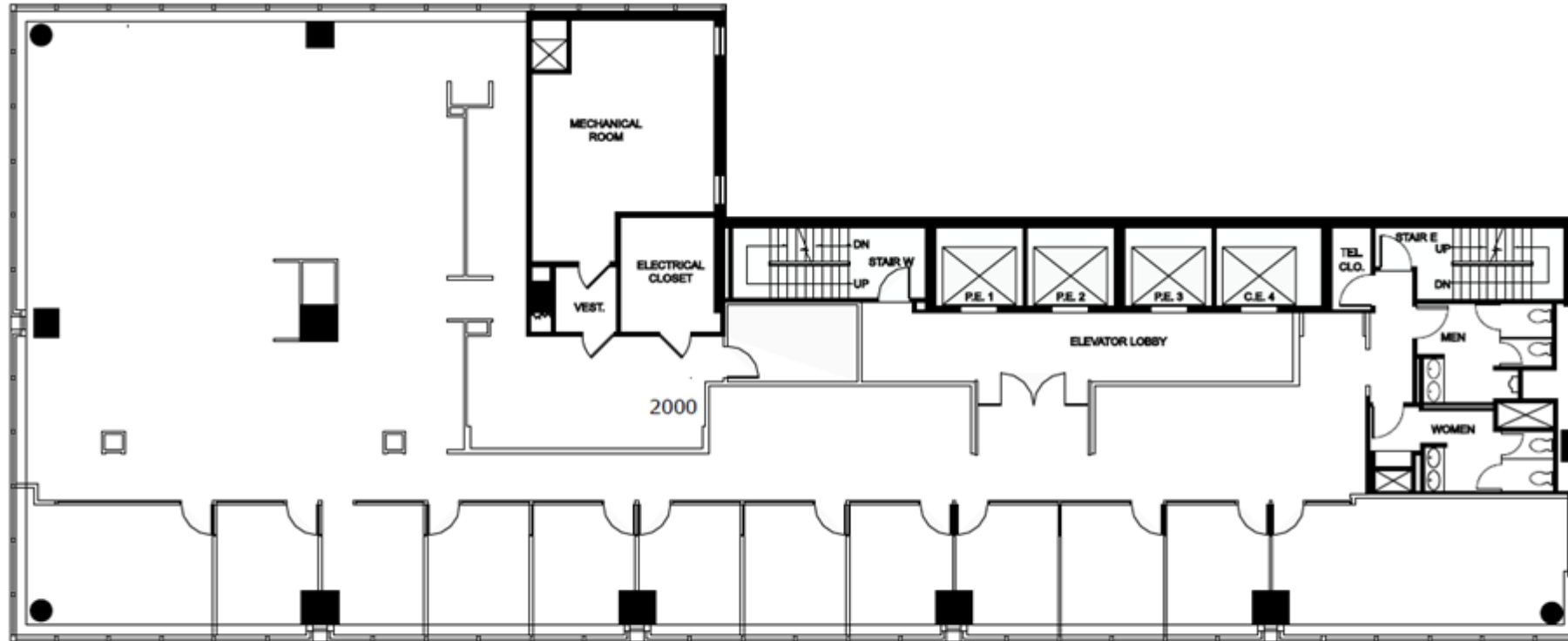




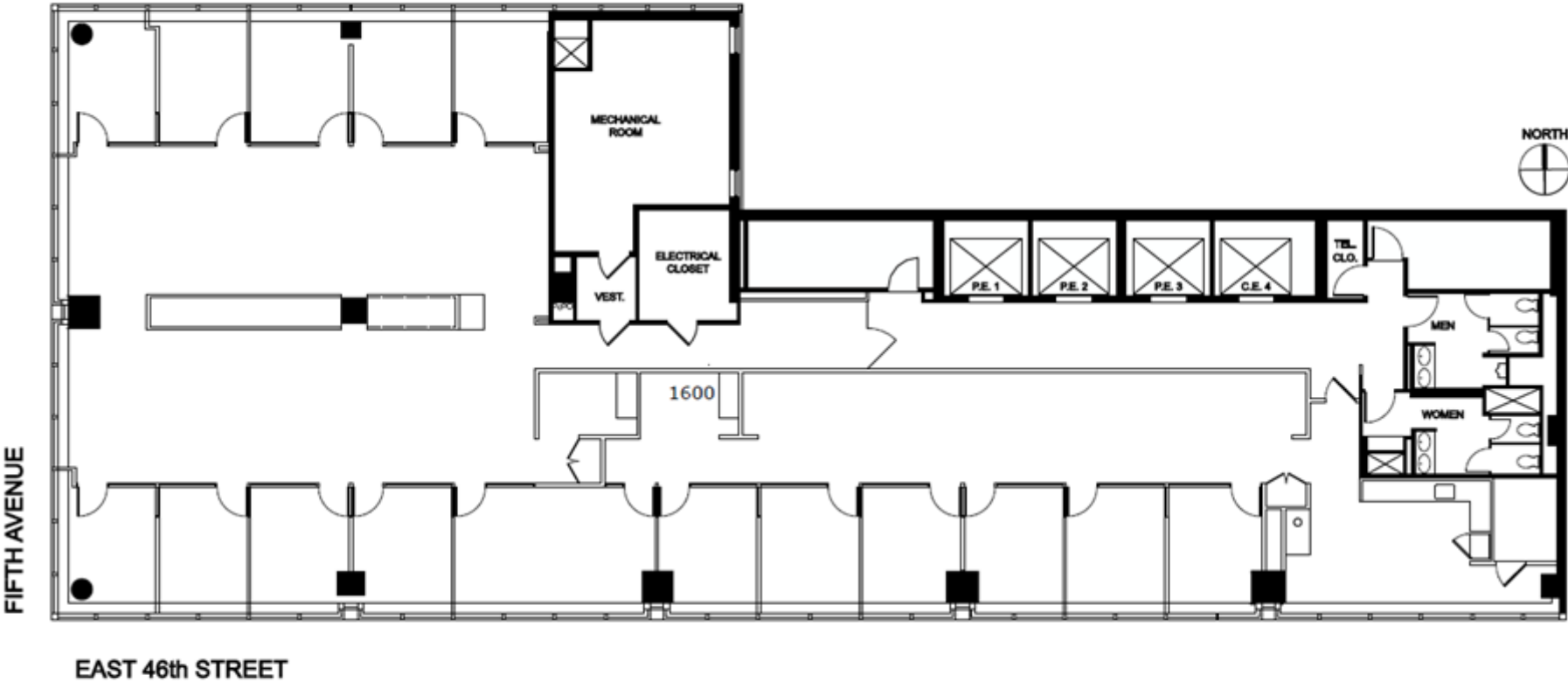
## 565 Fifth Avenue—22<sup>nd</sup> Floor(9,280 RSF) Existing Conditions



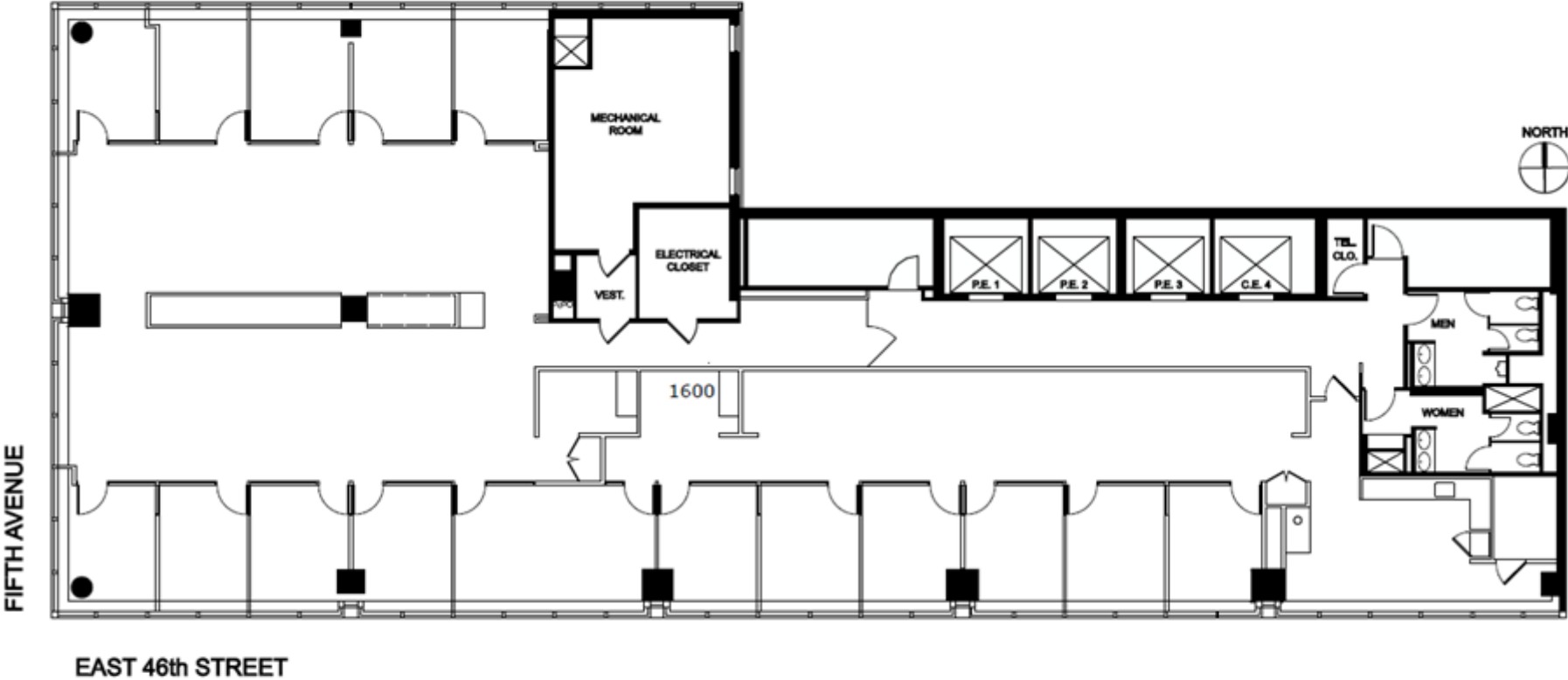
## 565 Fifth Avenue—20<sup>th</sup> Floor(9,280 RSF) Existing Conditions



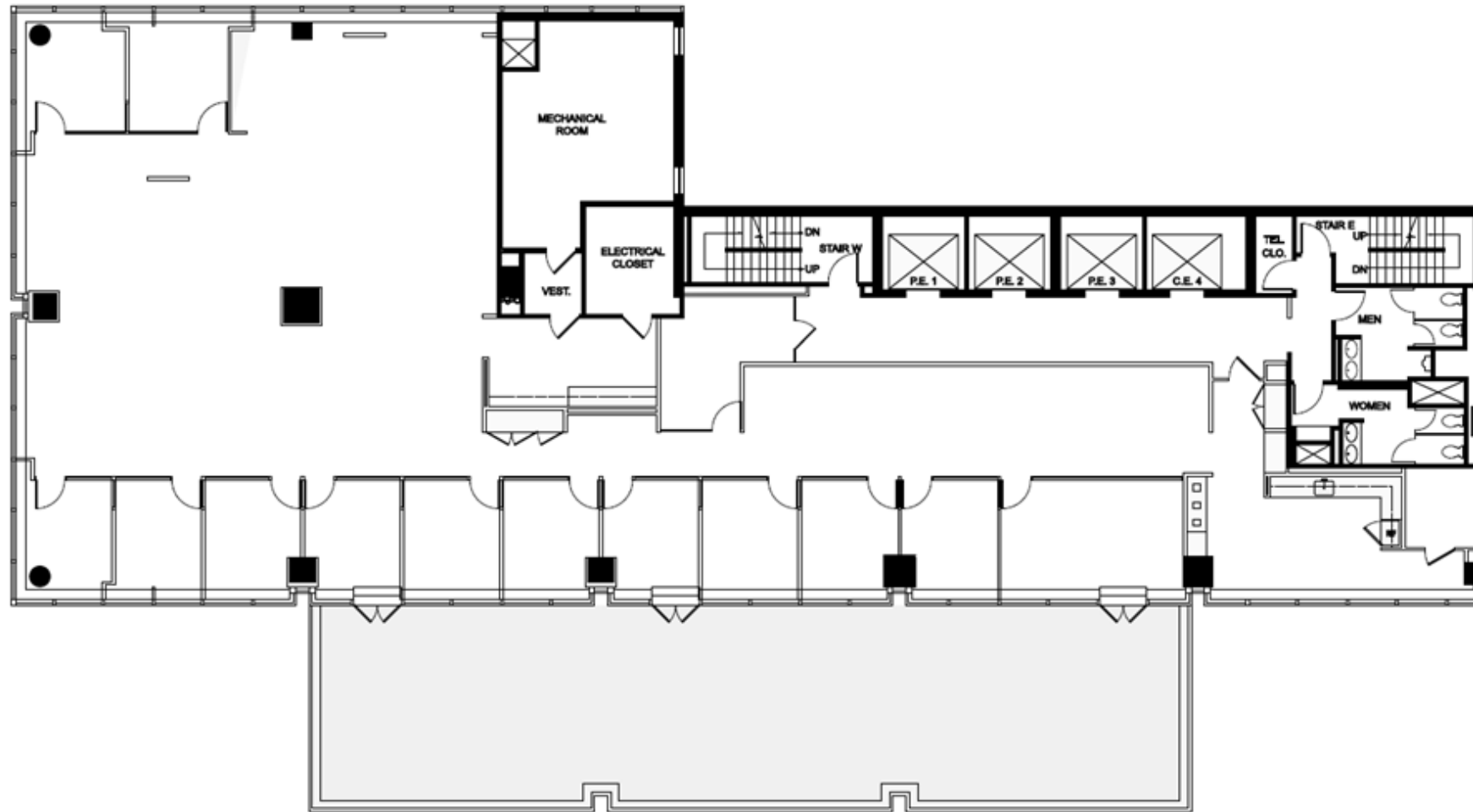
565 Fifth Avenue—16<sup>th</sup> Floor(9,280 RSF) Existing Conditions



565 Fifth Avenue—16<sup>th</sup> Floor(9,280 RSF) Existing Conditions



## 565 Fifth Avenue—15<sup>th</sup> Floor(9,280 RSF) Existing Conditions





---

## 565 Fifth Avenue—12<sup>th</sup> Floor(11,419 RSF) Existing Conditions

565 Fifth Avenue—8<sup>th</sup> Floor(18,205 RSF) Test-Fit

