



Space features:

• *Private wraparound terrace*

505 PARK AVENUE

9,404 RSF | ENTIRE 16TH FLOOR



Highlights

- Recently built, furnished and wired full-floor sublease
- Strong sublessor
- Private wraparound terrace overlooking Park Avenue
- Easily divisible to 7,000 RSF
- Move-in ready and a 5-minute walk from Central Park
- Ideal for Family Office, Alternative Investment and Money Management Use



Possession: Immediate

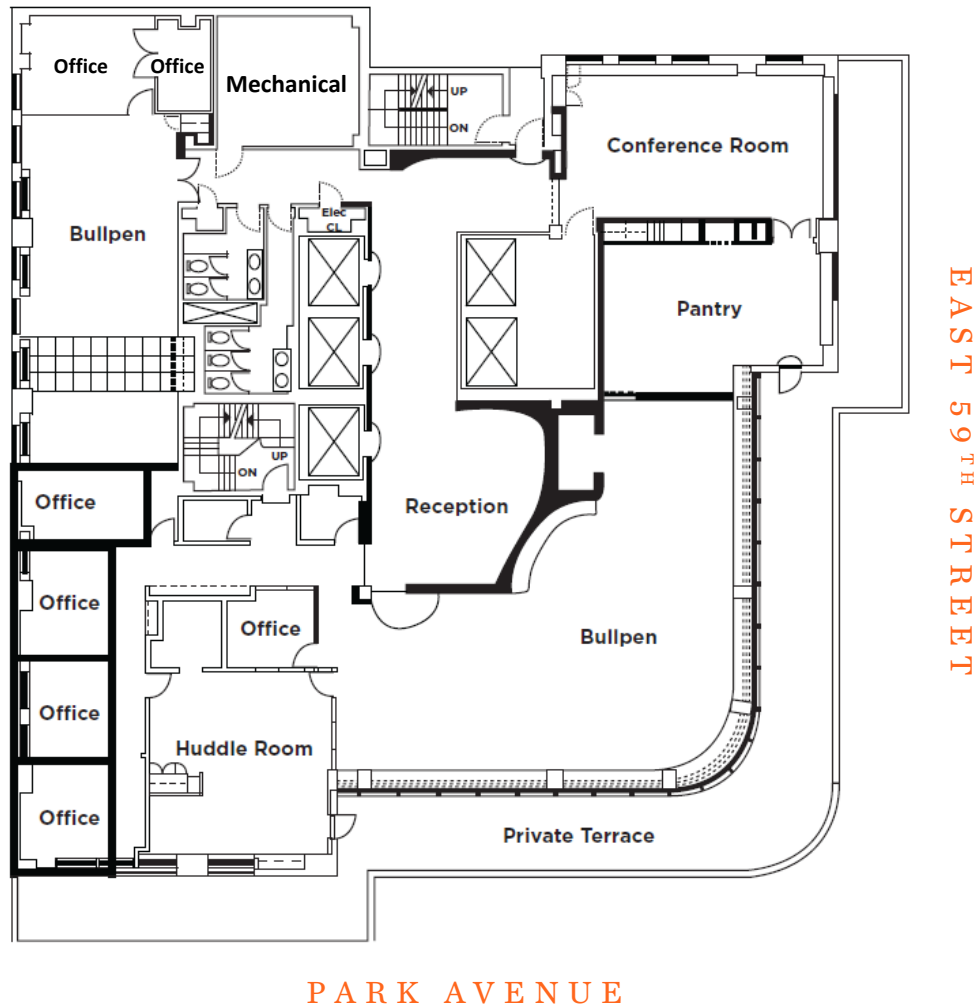
Rent: Upon Request

Term: Through October 30, 2026



ENTIRE 16TH FLOOR

9,404 RSF



- 7 Offices
- 1 Conference Room
- 1 Huddle Room
- 2 Open Bullpens
- 1 Eat-in Pantry
- Dedicated Reception Area
- Large Wraparound Terrace