

# 127 West 26<sup>th</sup> Street

Midtown South, New York  
Between Sixth & Seventh Avenues

---

## Building Overview

127 West 26th Street is a 12-story building in a prime location between 6th and 7th Avenues, allowing easy access to major transportation and subway lines. The building has 2 passenger elevators, 1 automatic freight, and 1 manual freight. Most major transit lines are within a 7-minute walk of the building. Additionally, Madison Square Park is less than a 5-minute walk. The building is located in the NoMad district, one of the city's most thriving neighborhoods.

---

## Building Highlights

- A boutique 12-story – 95,000 SF building in the heart of Chelsea
- 5-min walk to Madison Square Park
- Nice quiet block with nice restaurants and lunch locations

---

## Lease Term

Negotiable





# Space Description

---

Great full-floor in the heart of Chelsea.  
Landlord recently installed a new wet pantry,  
flooring and exposed ceilings throughout.  
Ownership will provide a custom fit-out per  
tenant's specifications and provide furniture.



# Floor Plan

127 West 26<sup>th</sup> Street

Entire 6th Floor

9,500 SF

\$35,000/ month

## Open Seating

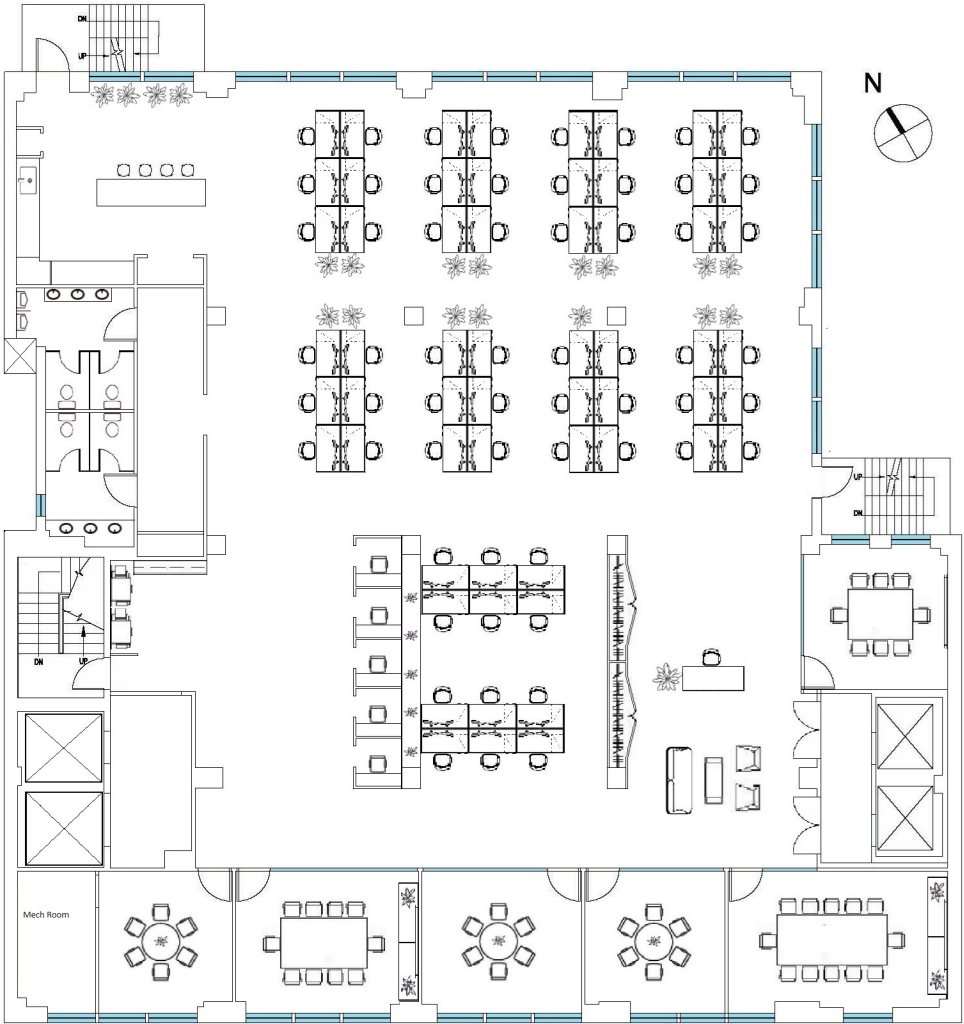
Workstations	60
Reception Area	1

## Collaboration Space

Office/Meeting Rooms	4
Conference Rooms	2

## Support

Wet Pantry	1
Phone Booths	5



West 26th Street