

# 1156 Avenue of the Americas





## Premises

Entire 7th Floor

9,600 SF

## Possession

Immediate

## Term

Negotiable

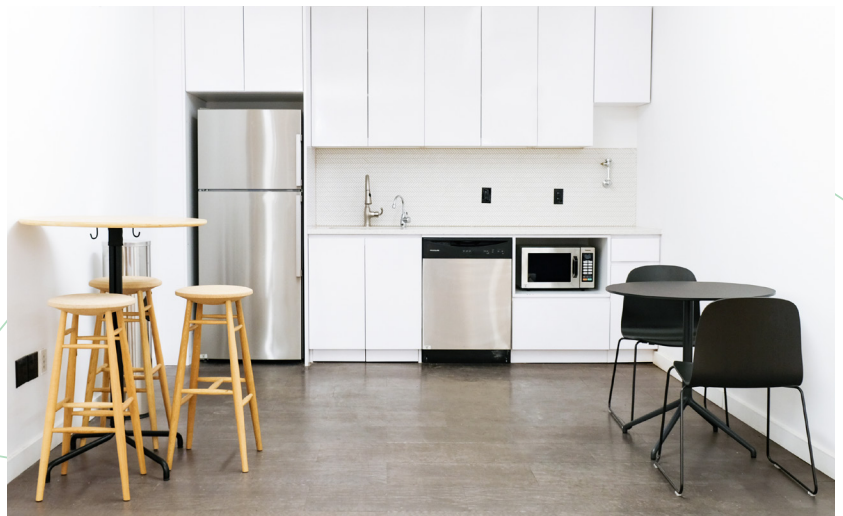
## Rate

Upon request



## Building Details

- Avenue of the Americas presence in boutique building
- Award-winning entrance and lobby
- WiredScore Certified and LEED Gold



## Transportation

- Close proximity to Grand Central, Bryant Park, Rockefeller Center and the following lines:

**B D F M N Q R W 1 2 3**

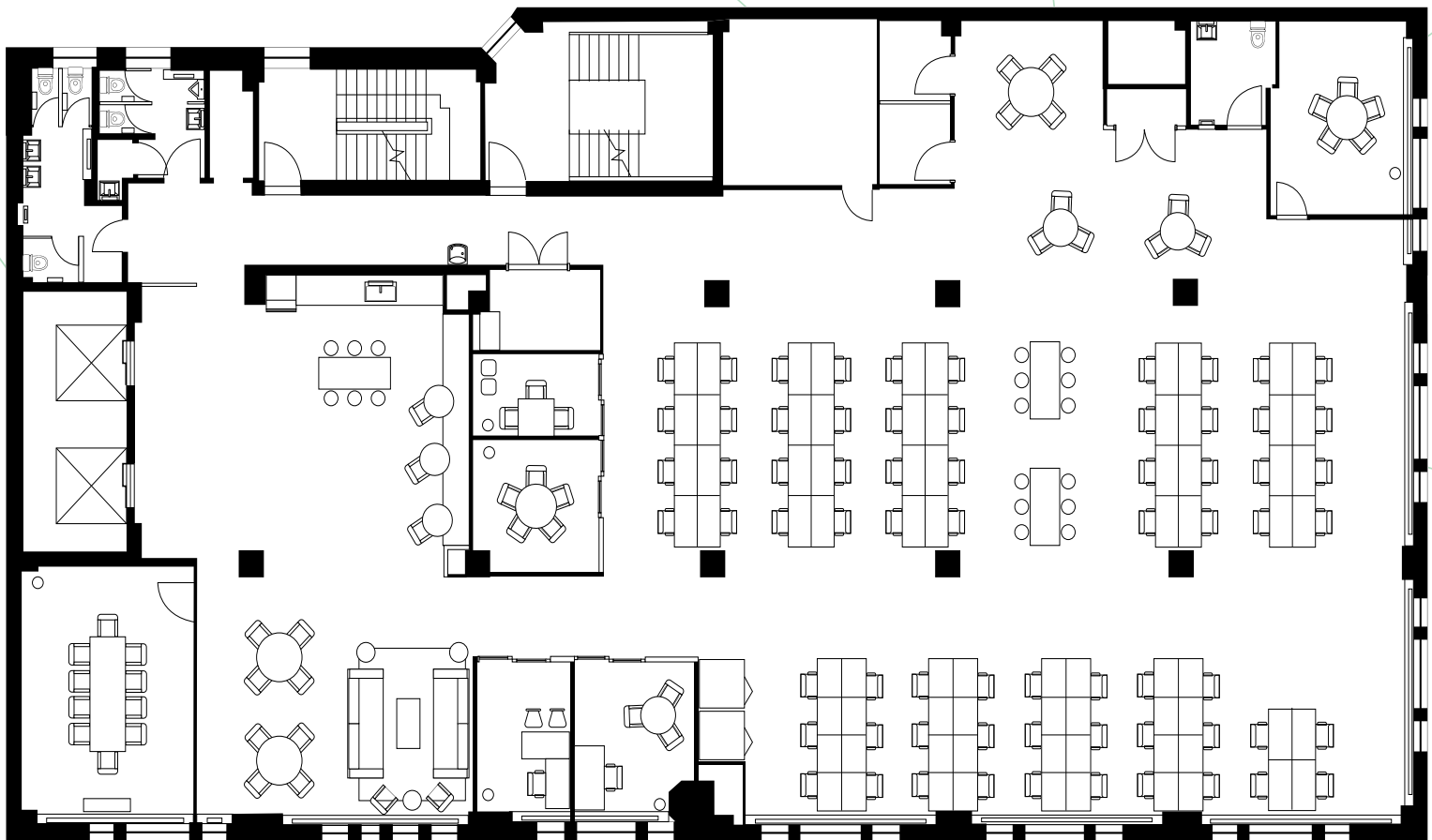
**4 5 6 7 S** MTA Metro-North Railroad MTA Long Island Railroad



## 7th Floor

- 68 seats
- 1 large conference room
- 2 small conference rooms
- Multiple collaboration areas
- 2 offices
- 2 phone booths
- Exposed brick
- Large lounge with pantry
- Fully furnished and move-in ready

### 7th Floor - Existing Conditions





# 1156 Avenue of the Americas

