

The logo features the number '575' in a large, bold, dark blue sans-serif font, with the word 'LEXINGTON' in a smaller, all-caps, dark blue sans-serif font directly below it. To the right of the text is a decorative graphic consisting of a thin dark blue arc and four colored circles (yellow, teal, blue, and red) arranged in a vertical line.

575

LEXINGTON

**10K RSF FULL FLOOR
SUBLEASE OPPORTUNITY**



ENTIRE 26TH FLOOR 9,
976 RSF

POSSESSION

Immediate

TERM

Thru 11/30/2028

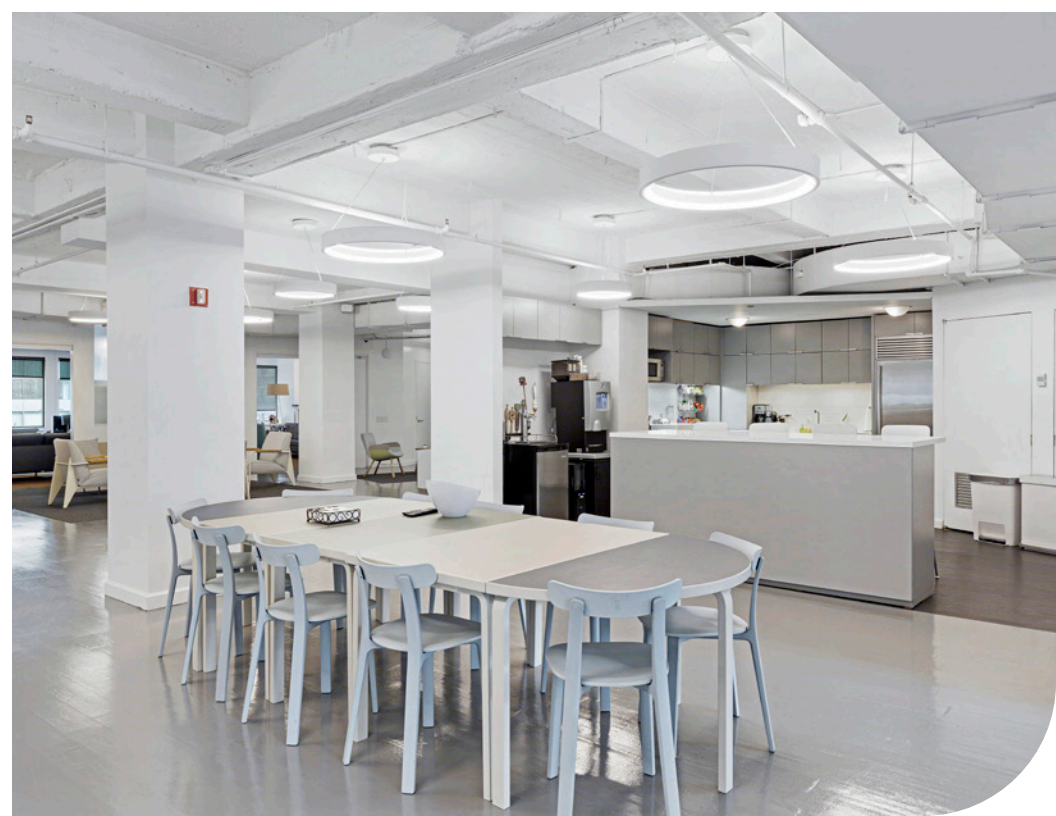
ASKING RENT

Upon request

SPACE COMMENTS

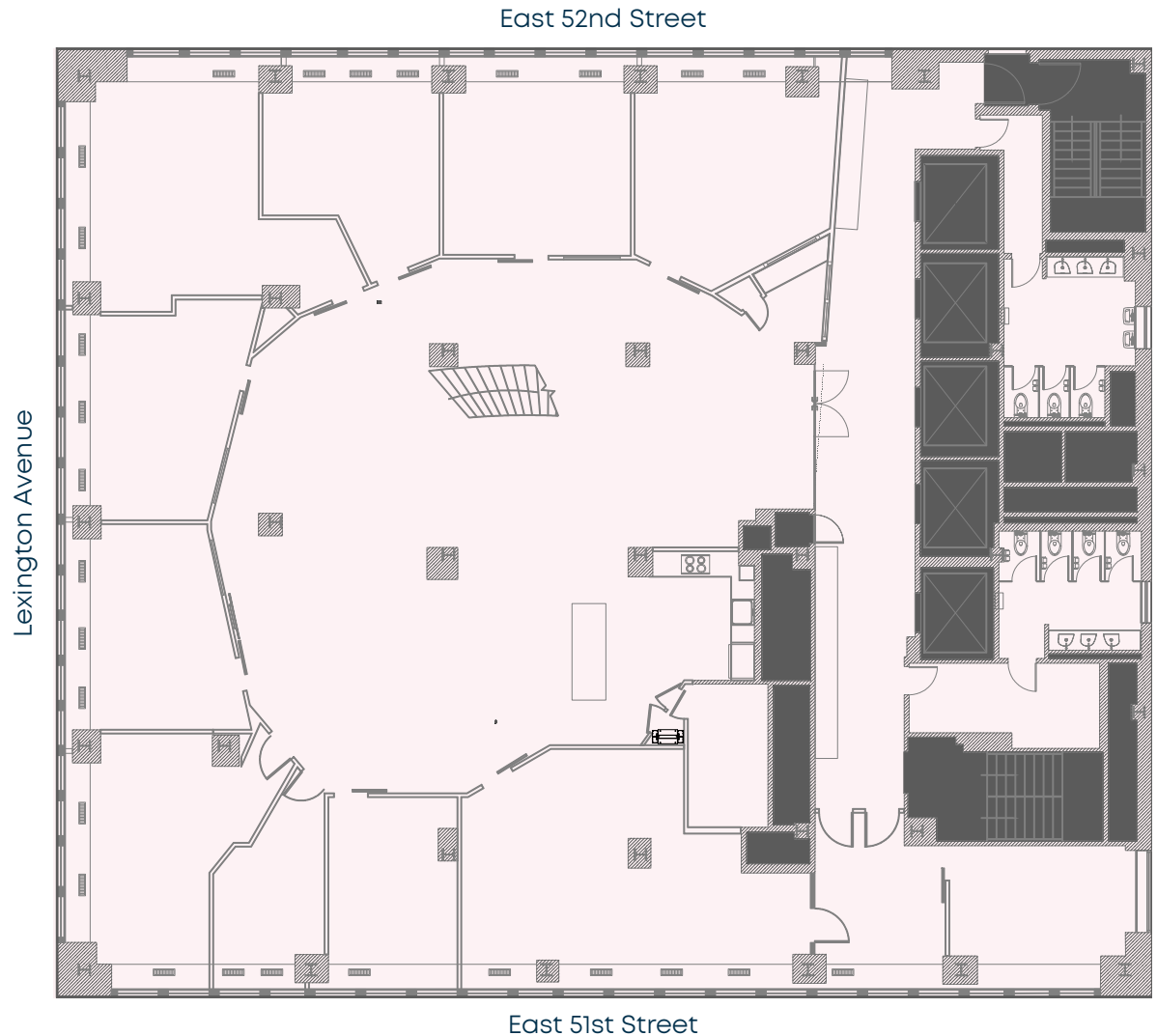
- » Beautiful, recently renovated, full floor opportunity with exterior offices / team rooms
- » Large open kitchen that opens up to a large collaboration area
- » Exposed ceilings and hardwood floors throughout the Premises
- » Fully furnished and wired
- » Perfect for post-production firms





BUILDING COMMENTS

- » Recently completed capital improvement program including a new lobby, elevators, building systems and enhanced HVAC air filtration
- » 24/7 attended lobby
- » Conveniently located across the street to the 6 subway and a 5 minute walk to Grand Central
- » Immediate proximity to multiple restaurants and lunch spots





575
LEXINGTON

