

MEDICAL SPACE FOR LEASE

160 EAST 56TH STREET, NEW YORK, NY 10022

5,500SF AVAILABLE

SPACE DETAILS:

SIZE: 5,500 SF

RENT: \$65/SF

MIN DIVISIBLE: 1,500 SF

POSSESSION: IMMEDIATE

SPACE HIGHLIGHTS:

- Landlord will Build-To-Suit
- Multiple Subdivision Opportunities
- Adaptable to any Dental Use
- Oversized Windows with North & South Exposure



DEMOGRAPHICS:	1 mile	2 mile	3 mile
Population	161,959	674,116	1,306,262
Households	95,748	371,358	664,576
Daytime Employment	691,315	1,288,907	1,573,068

MEDICAL SPACE FOR LEASE

160 EAST 56TH STREET, NEW YORK, NY 10022

BUILDING HIGHLIGHTS:

- Exciting Lobby Upgrades Coming Soon
- 4 Major Hospitals Nearby
- Near Multiple Major Forms of Transit
- High Foot Traffic Area

LOBBY RENDERINGS:



MEDICAL SPACE FOR LEASE

160 EAST 56TH STREET, NEW YORK, NY 10022

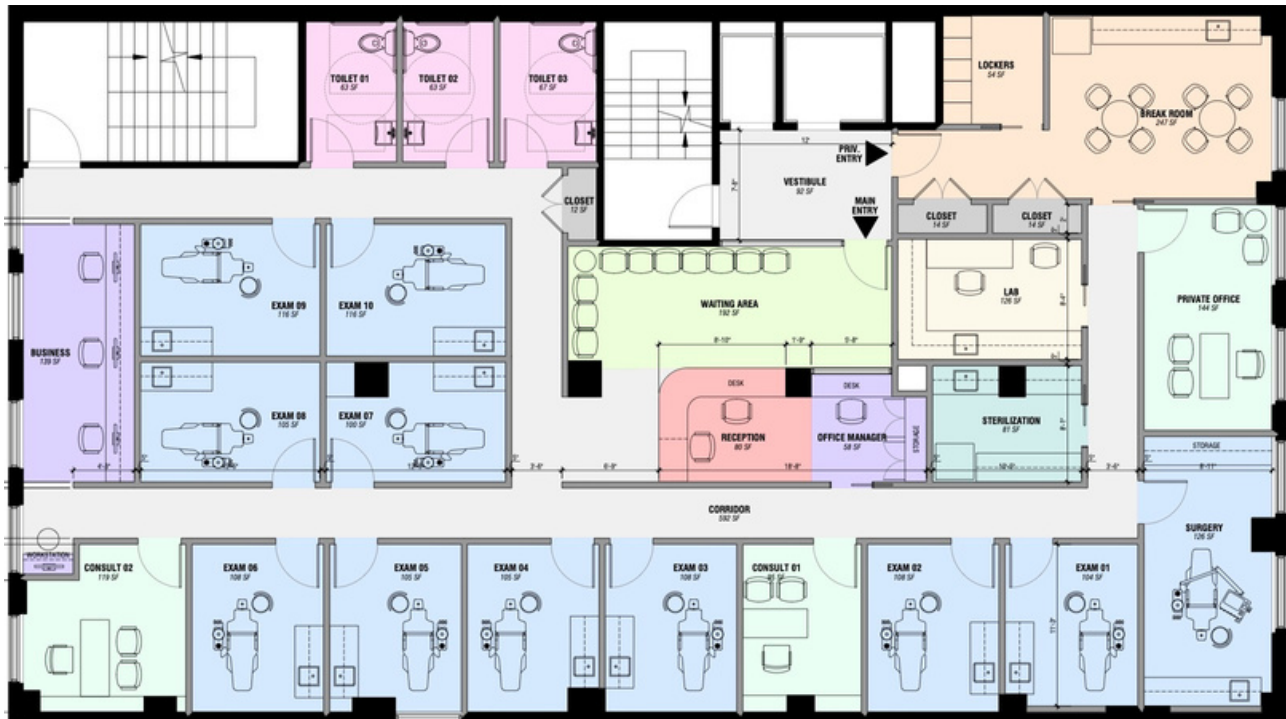
ENTIRE SPACE FLOOR PLATE



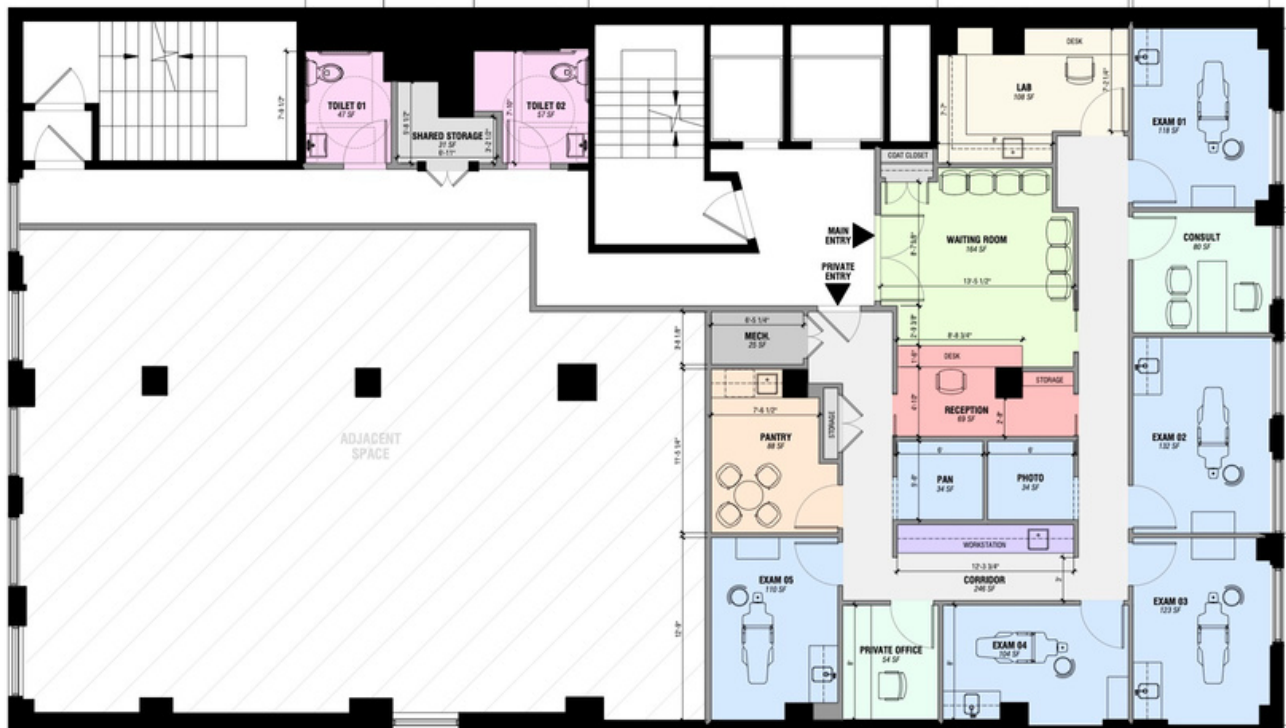
MEDICAL SPACE FOR LEASE

160 EAST 56TH STREET, NEW YORK, NY 10022

ENTIRE FLOOR- PLAN

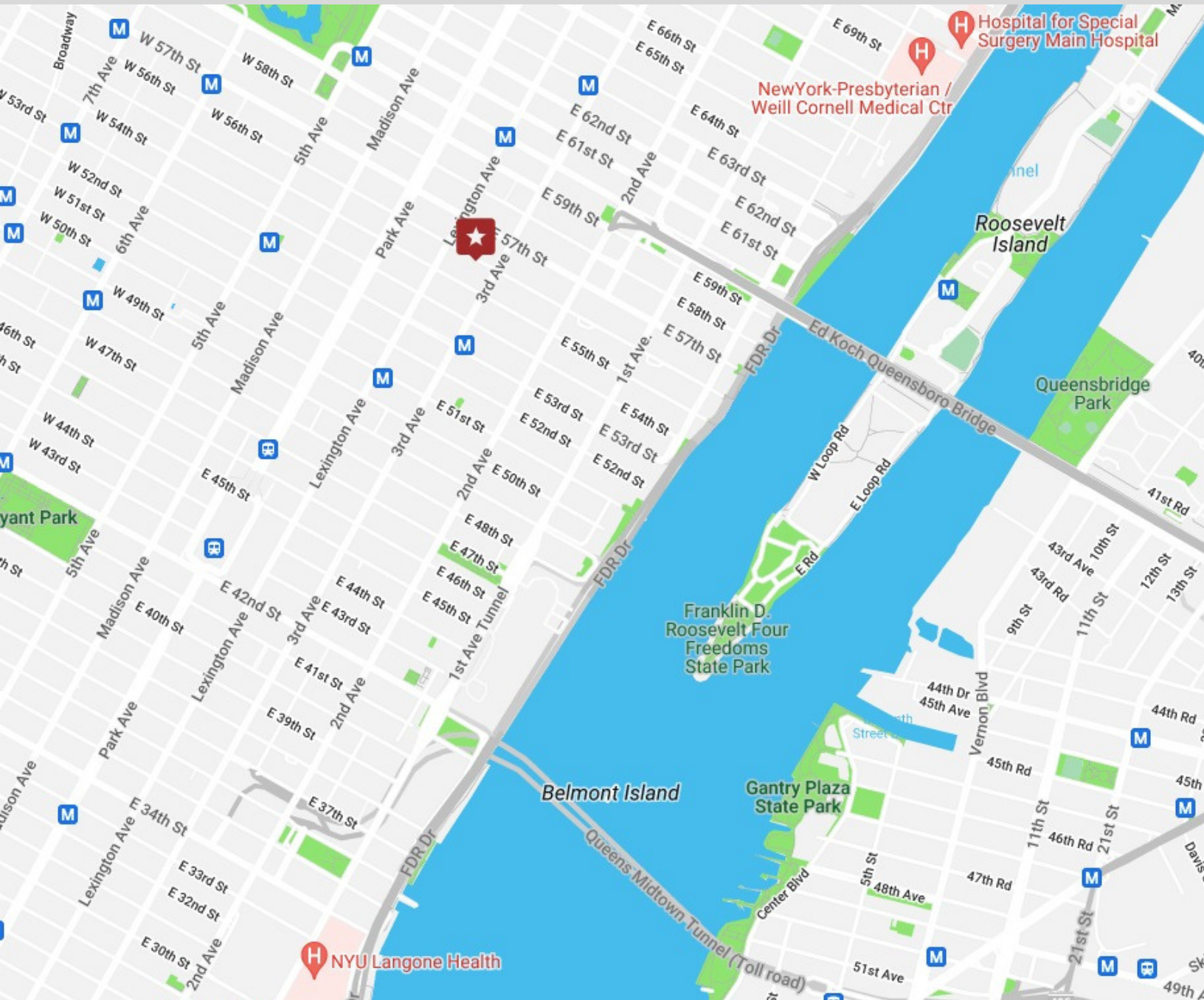


FLOOR SUBDIVISION- PLAN



MEDICAL SPACE FOR LEASE

160 EAST 56TH STREET, NEW YORK, NY 10022



NEW YORK PRESBYTERIAN HOSPITAL
HOSPITAL FOR SPECIAL SURGERY
NYU LANGONE HEALTH
BELLVUE HOSPITAL
SUBWAYS NEARBY

1.1 Miles Away

1.2 Miles Away

1.5 Miles Away

1.7 Miles Away

4 6 E F M N Q R W