

GROUND FLOOR **MEDICAL CONDO**

| | |
|----------------|-------------------|
| PRICE | \$1,395,000 |
| APPROX SIZE | 959 SQ FT |
| COMMON CHARGES | \$1,627 PER MONTH |
| ASSESSMENTS | \$1,627 PER MONTH |
| FINANCING | 90% MAXIMUM |
| TAXES | \$27,533 PER YEAR |



25 CENTRAL PARK WEST, 1R
LINCOLN SQUARE, BETWEEN WEST 62ND STREET AND WEST 63RD STREET

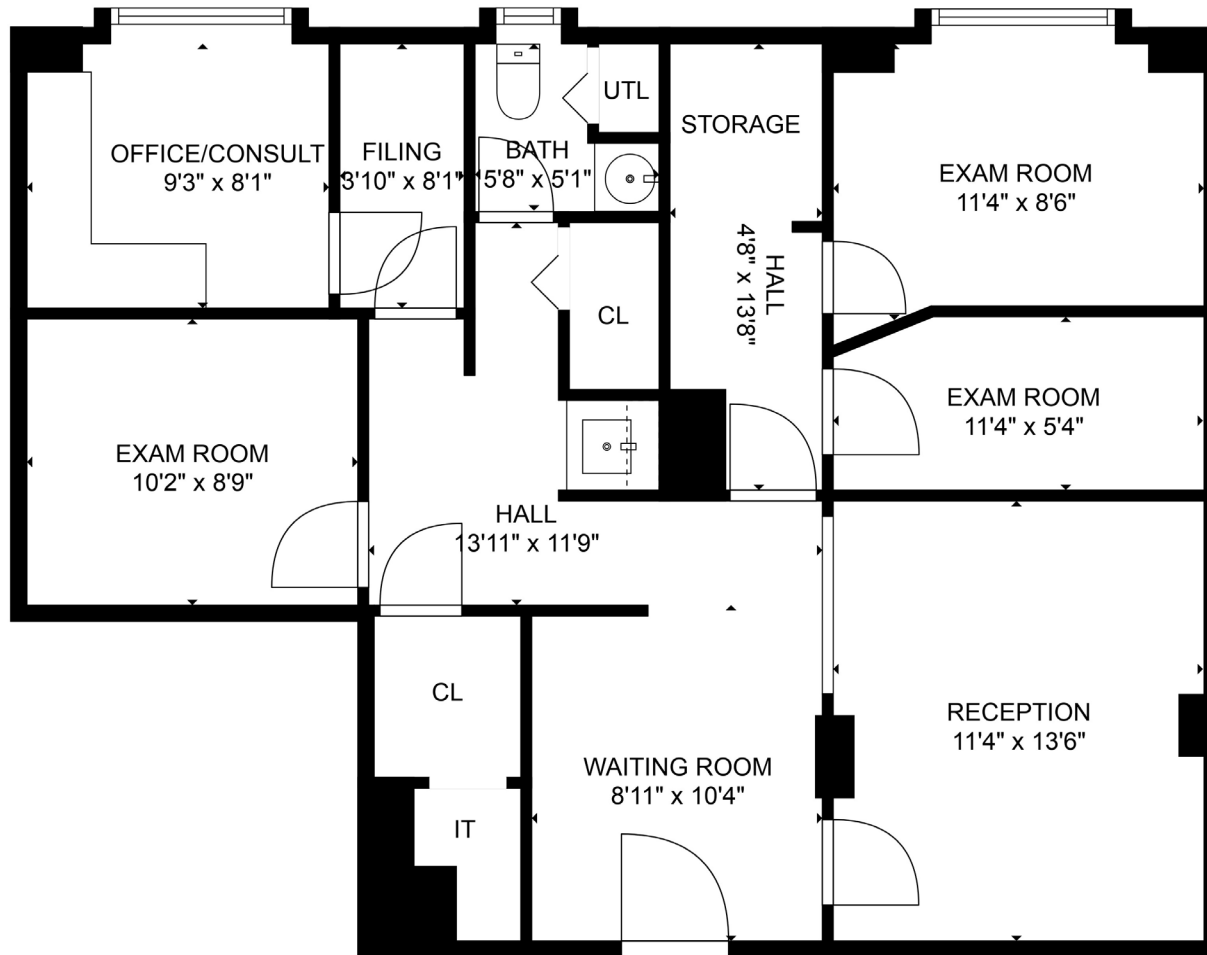
LAYOUT

- WAITING ROOM
- RECEPTION
- THREE EXAM ROOMS
- OFFICE/CONSULT
- IT ROOM
- RESTROOM

ADDITIONAL FEATURES

- 3 WINDOWS FACING WEST 63RD STREET
- CENTRAL AIR CONDITIONING
- ADAPTABLE TO ANY MEDICAL SPECIALTY





FLOOR PLAN FOR ILLUSTRATIVE PURPOSES ONLY

