

CENTRAL PARK WEST, NEW YORK, NY

10 WEST 66TH STREET

BETWEEN CENTRAL PARK WEST AND BROADWAY

ONE-OF-A-KIND GROUND FLOOR OFFICE FOR LEASE WITH
PRIVATE STREET ENTRANCE

SUITE 1 EAST



PROPERTY DETAILS

PREMISES

Suite 1 East: 1,200 square feet

ENTRANCE

Private Street Entrance

POSSESSION

Immediate

CEILINGS

9 Feet in Reception. 8 Feet throughout.

TENANT

Previously Professional Office

ASKING RENT

Suite 1 East: \$7,000 per month

FEATURES

This is a very desirable office being offered for lease for the first time in the perfect Upper West Side setting. The 1,200 Square Foot Suite features a beautifully landscaped walkway to a Private Street Entrance. Within the space you have a Reception and Seating Area, Two Bathrooms, a Kitchen and Kitchenette, Four (4) Private Offices/Exam Rooms, and a Storage Area. It is adaptable to any medical specialty. The unit was recently painted and renovated, and has Central Air Conditioning and Heating. It can also be leased as a general office space.

Park Ten is located on a beautiful tree-lined street just a half-a-block from Central Park and is convenient to shopping, restaurants, Broadway, the Number 1 Subway, and dozens of upscale hi-rise residential apartment buildings nearby.

The Building has 32 stories, 250 units, a 24 hour doorman and a 24- hour attended on-site garage, and is easily within walking distance from Lincoln Center.

CONVENIENT ACCESS TO



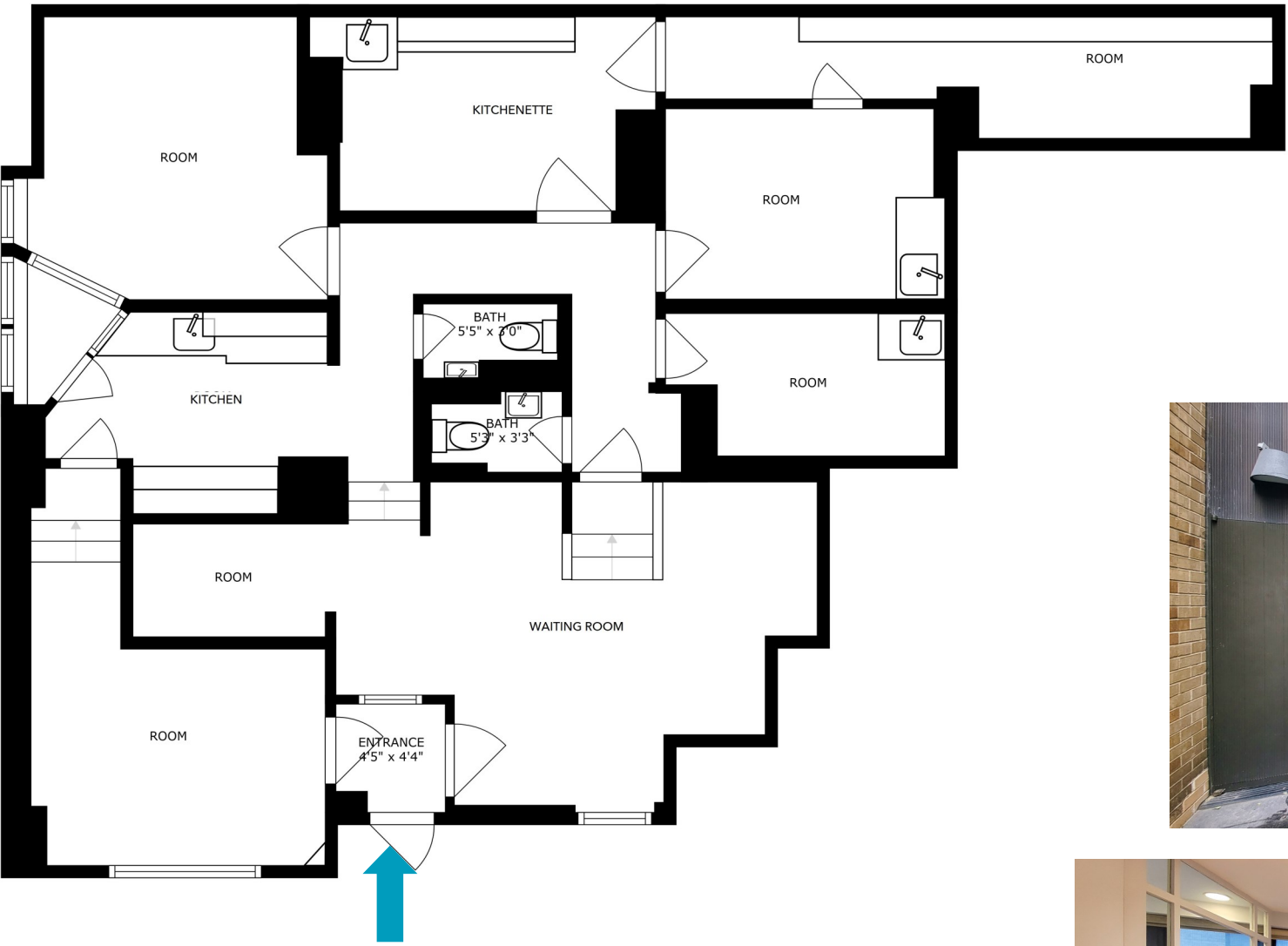
10 WEST 66TH STREET

BETWEEN CENTRAL PARK WEST AND BROADWAY



ENTRANCE TO SUITE 1 EAST





WEST 66TH STREET



